

APPROCHE AUX INSTRUMENTS

LE HAVRE OCTEVILLE

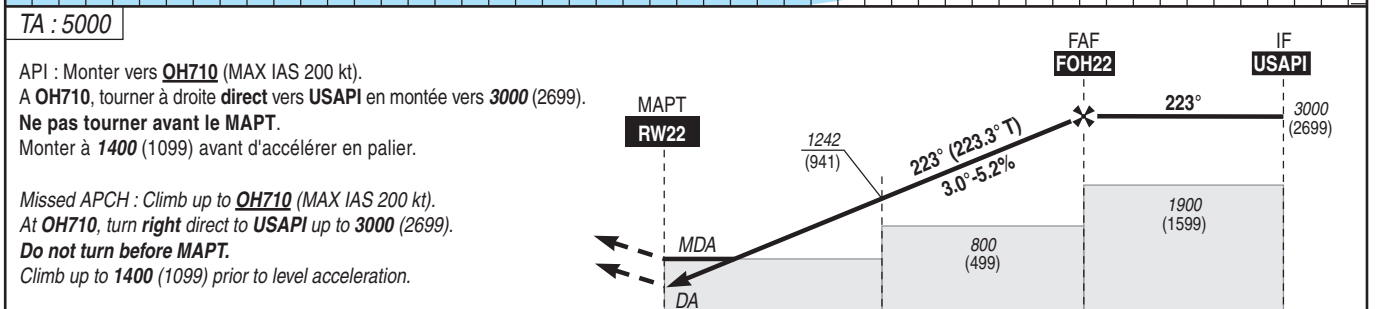
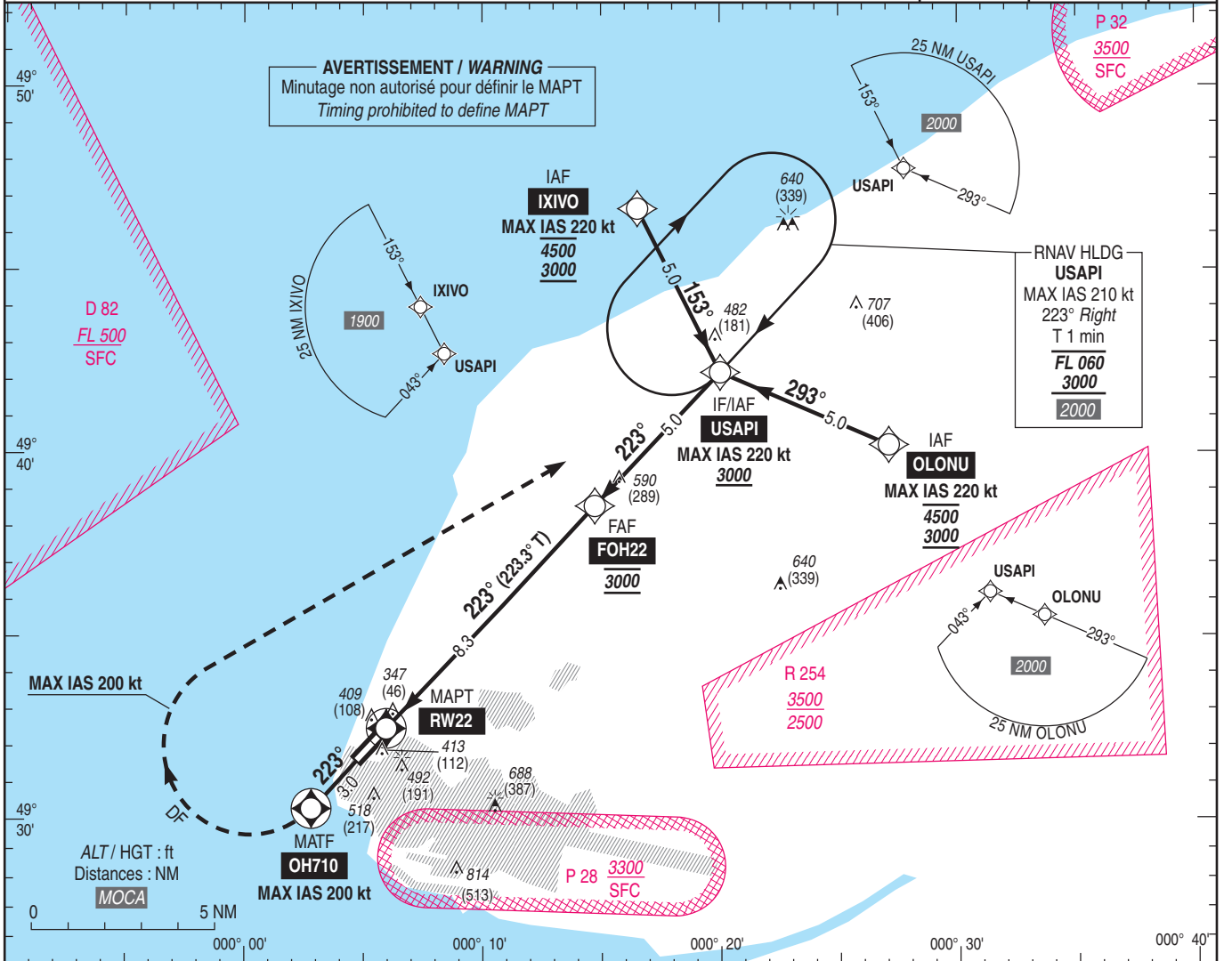
Instrument approach

CAT A B C D

ALT AD : 313, THR : 301 (11 hPa)

RNP RWY 22

<p>STAP 135.205 APP : RENNES Approche / Approach 120.350 AFIS : LE HAVRE Information 135.205 Absence ATS : A/A FR seulement. Obtenir le QNH local sur STAP (FR) ou obtenir le QNH de RENNES auprès de RENNES APP. A/A FR only. Obtain local QNH from STAP (FR) or obtain RENNES QNH from RENNES APP.</p>	<p>RNP APCH</p>	<p>EGNOS Ch 62582 E22A RDH/TCH : 49</p>	<p>VAR 0° (2020)</p>
---	------------------------	---	-------------------------------------



THR ← (NM) 0 2.8 8.3 13.3

MNM AD : distances verticales en pieds, RVR et VIS en mètres / vertical distances in feet, RVR and VIS in metres. REF HGT : ALT THR

CAT	LPV			LNAV			MVL / Circling (1)		MVL / Circling (1) Absence ATS Sans/Without QNH local		DIST RW22				
	DA (H)	RVR	OCH	MDA (H)	RVR	OCH	MDA (H)	VIS	MDA (H)	VIS	NM	8	7	6	5
A	510 (200)	800	185				820 (520)	1500	1360 (1060)	1500	ALT (HGT)	2900 (2600)	2580 (2280)	2260 (1960)	1940 (1640)
B	510 (200)	800	192				820 (520)	1600	1360 (1060)	1600					
C	510 (210)	800	203	670 (370)	1300	364	920 (620)	2400	1460 (1160)	2400		4	3	2	1
D	520 (220)	800	212				1020 (720)	3600	1560 (1260)	3600					

Observations / Remarks : Panne de guidage GNSS lors de l'approche / Loss of guidance during approach : voir / see AIP ENR 1.5
(1) MVL interdites au Sud-Est de la piste / Circling prohibited South-East of RWY.
Absence ATS : MVL HJ seulement si PCL hors service / Circling daytime only if PCL U/S.