

**APPROCHE AUX INSTRUMENTS**

**MONTPELLIER MEDITERRANEE**

Instrument approach

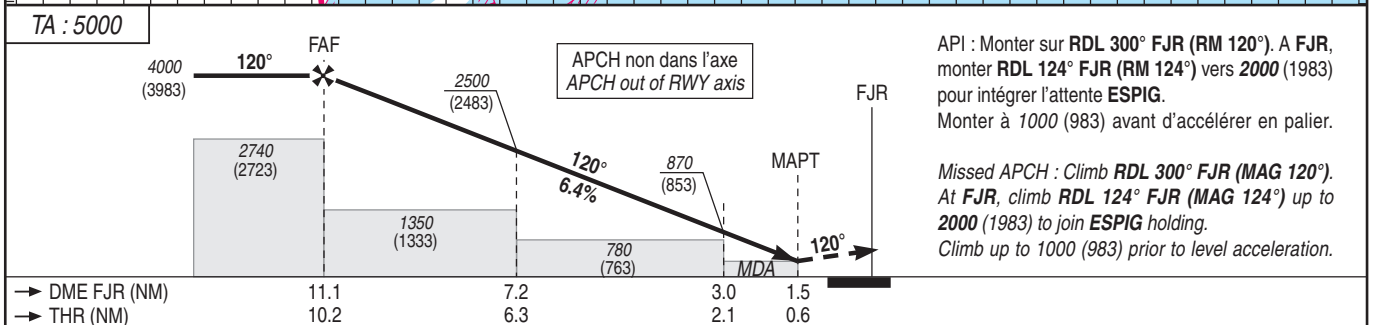
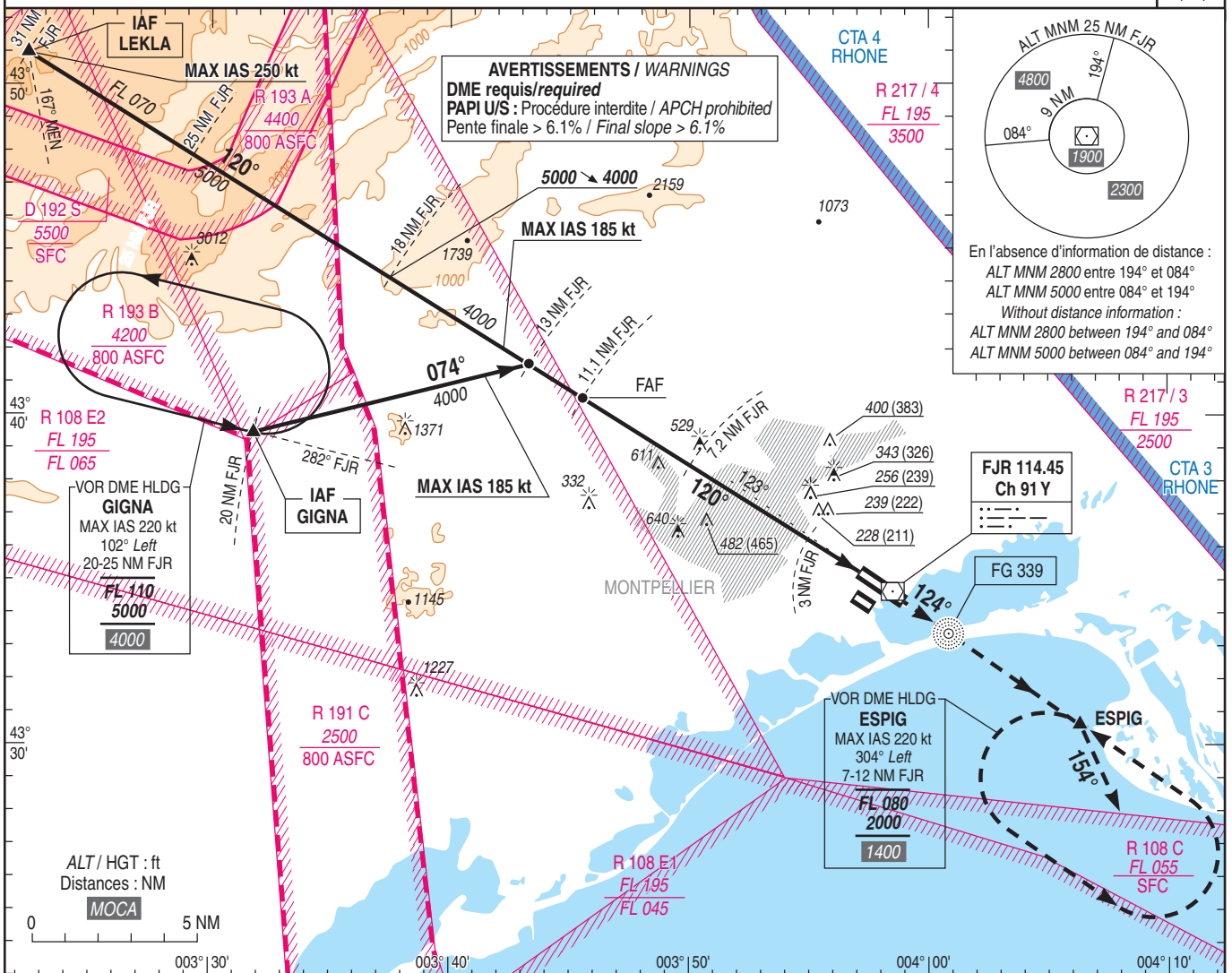
CAT A B C D

ALT AD : 17 (1 hPa), THR : 17

VOR Z RWY 12L

FREQ : voir / see AD 2 LFMT COM 01

VAR  
2°E  
(20)



MNM AD : distances verticales en pieds, RVR et VIS en mètres / vertical distances in feet, RVR and VIS in metres. REF HGT : ALT AD

CAT	VOR Z			MVL / Circling <sup>(1)</sup>		DME FJR NM	10	9	8	7	6	5	4	3
	MDA (H)	RVR	OCH	MDA (H)	VIS									
A	480 (460)	1500	457	540 (520)	1500	ALT	3590	3200	2810	2420	2030	1640	1250	870
B	480 (460)	1500		640 (630)	1600	(HGT)	(3573)	(3183)	(2793)	(2403)	(2013)	(1623)	(1233)	(853)
C	620 (600)	2400		800 (780)	2400									
D	720 (700)	2400		880 (860)	3600									

Observations / Remarks : (1) MVL interdites au Sud-Ouest des pistes. (1) Circling prohibited South-West of RWY.

	70 kt	85 kt	100 kt	115 kt	130 kt	160 kt	185 kt
VSP (ft/min)	450	550	650	750	840	1040	1200