

APPROCHE AUX INSTRUMENTS

LE CASTELLET

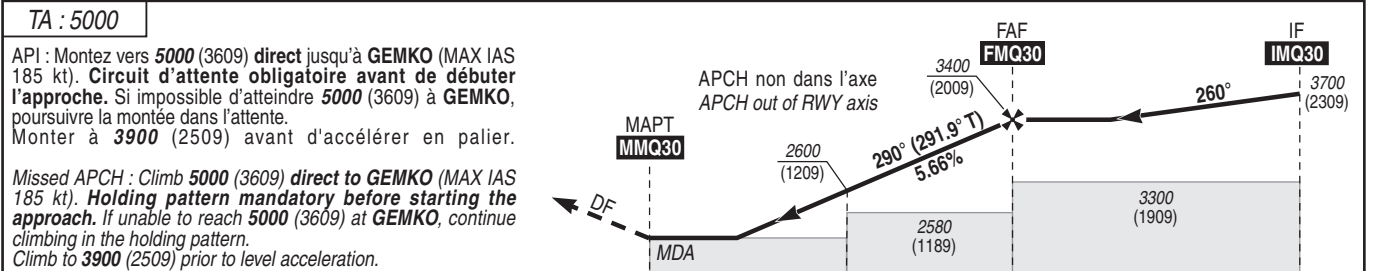
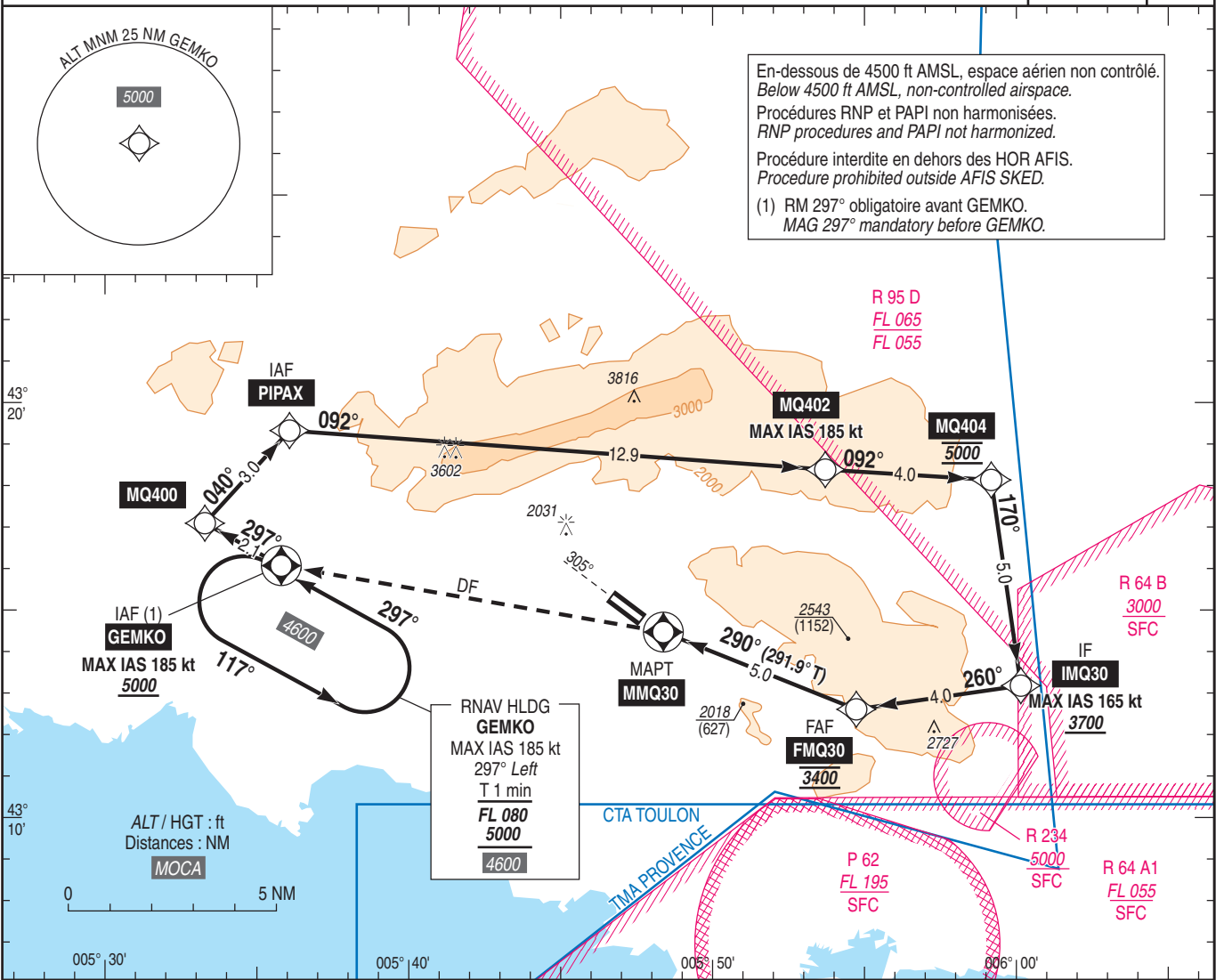
Instrument approach

CAT A B C

ALT AD : 1391 (50 hPa), THR : 1388

RNP RWY 30

APP : PROVENCE Approche / Approach : voir/see AD 2 LFML COM 01	RNP APCH	VAR 2°E (20)
AFIS : LE CASTELLET Information 119.000		



THR ← (NM)
MAPT ← (NM)

MNM AD : distances verticales en pieds, RVR et VIS en mètres / vertical distances in feet, RVR and VIS in metres. REF HGT : ALT AD

CAT	LNAV			MVL (Sud HJ) / Circling (South HJ) (2)		DIST MMQ30 NM ALT (HGT)
	MDA (H)	RVR	OCH	MDA (H)	VIS	
A		1500		2330 (940)	1500	4 3060 (1669) 3 2710 (1319) 2 2370 (979)
B	2080 (690)	1600	683	2380 (990)	2400	
C		3200		2810 (1420)	3200	

Observations / Remarks : (2) MVL/Circling CAT C : MAX IAS 160 kt.
Perte de guidage GNSS lors de l'approche / Loss of GNSS guidance during approach : voir / see ENR 1.5.

FAF - MMQ30	5.0 NM	70 kt 4 min 17	85 kt 3 min 32	100 kt 3 min 00	115 kt 2 min 37	130 kt 2 min 18	145 kt 2 min 04	160 kt 1 min 52
VSP (ft/min)		400	490	570	660	740	830	920