

APPROCHE AUX INSTRUMENTS

NICE COTE D'AZUR

Instrument approach

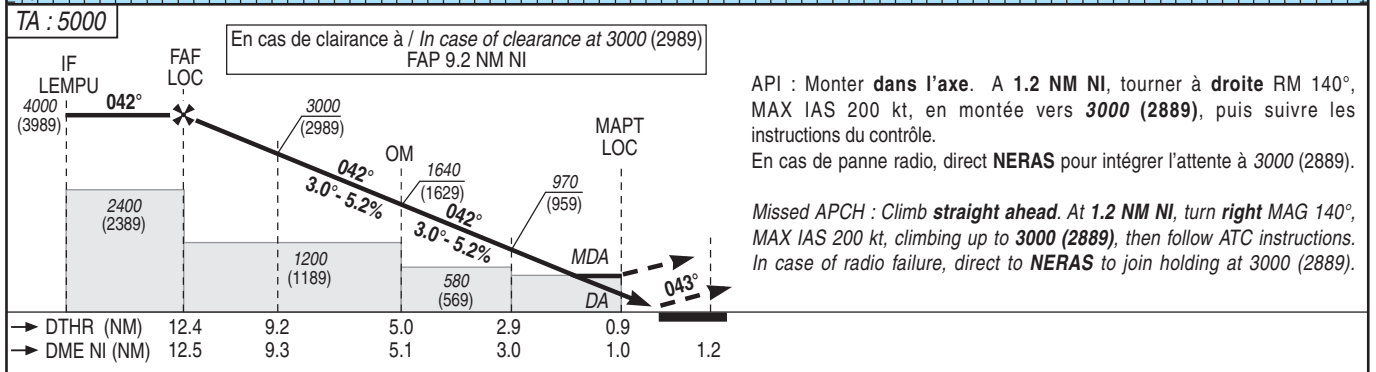
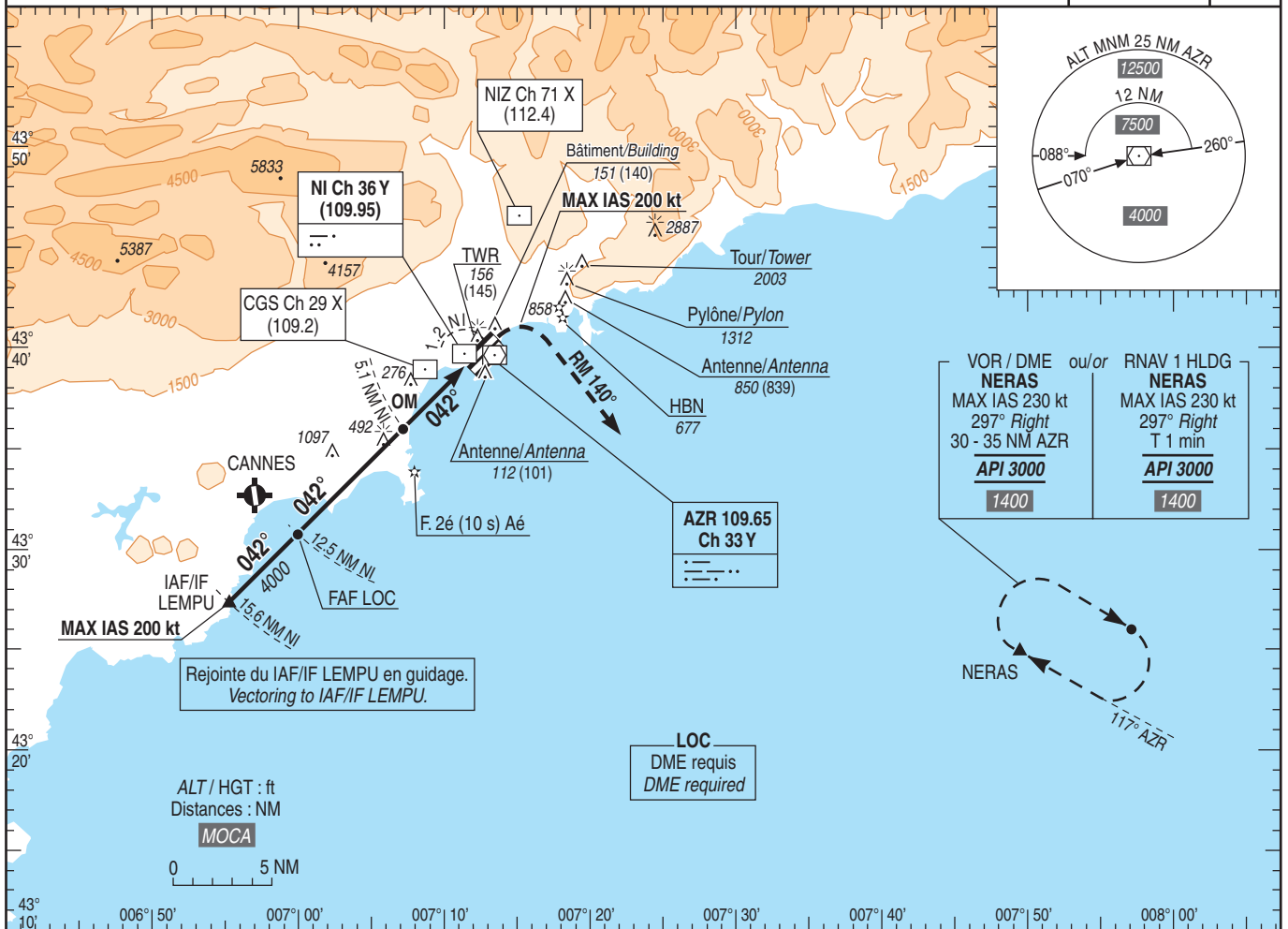
CAT A B C D

ALT AD : 12, DTHR : 11 (1 hPa)

FNA ILS ou/or LOC RWY 04L Z (VECTORING)

FREQ : Voir / See AD 2 LFMN COM 01

| | |
|------------------|-------------|
| ILS - DME | VAR |
| NI 109.95 | 2° E |
| RDH : 49 | (20) |



MNM AD : distances verticales en pieds, RVR et VIS en mètres / vertical distances in feet, RVR and VIS in metres. REF HGT : ALT DTHR

| CAT | ILS (1) API 2.5% | | | ILS (1) API 3% | | | LOC+DME NI | | | MVL / Circling (2) | | DME NI | | | | | | |
|-----|---------------------|------|-----|-------------------|------|-----|------------|------|-----|--------------------|------|--------|--------|--------|--------|--------|--------|--------|
| | DA (H) | RVR | OCH | DA (H) | RVR | OCH | MDA (H) | RVR | OCH | MDA (H) | VIS | NM | 12 | 11 | 10 | 9 | 8 | 7 |
| A | 310 (300) | 1400 | 297 | 290 (280) | 1300 | 278 | | | | 780 (760) | 3500 | | 3840 | 3520 | 3200 | 2880 | 2560 | 2240 |
| B | 320 (310) | 1400 | 307 | 300 (290) | 1400 | 288 | | | | 780 (760) | 3500 | | (3829) | (3509) | (3189) | (2869) | (2549) | (2229) |
| C | 390 (380) | 1700 | 378 | 310 (300) | 1400 | 298 | 390 (380) | 1700 | 377 | 1700 (1690) | 5000 | | 6 | 5 | 4 | 3 | 2 | 1 |
| D | 400 (390) | 1800 | 388 | 320 (310) | 1400 | 308 | | | | 2420 (2410) | 5000 | | 1920 | 1610 | 1290 | 970 | 650 | 330 |
| DL | 400 (390) | 1800 | 388 | 320 (310) | 1400 | 308 | | | | | | | (1909) | (1599) | (1279) | (959) | (639) | (319) |

Observations / Remarks : (1) Pour les opérations de transport public, l'utilisation de ces minima impose la prise en compte de la panne d'un moteur en API.

For public transport operations, engine failure during missed APCH must be taken into account to use these minima.

(2) MVL interdites au Nord-Ouest des pistes. / Circling prohibited North-West of RWY.

PAPI RWY04L - portée limitée à 7000 m / scope limited to 7000 m

| | | | | | | | | | |
|--------------|--------|----------|----------|----------|----------|----------|----------|----------|----------|
| OM - DTHR | 5.0 NM | 70 kt | 85 kt | 100 kt | 115 kt | 130 kt | 145 kt | 160 kt | 185 kt |
| VSP (ft/min) | | 4 min 15 | 3 min 30 | 2 min 58 | 2 min 35 | 2 min 17 | 2 min 03 | 1 min 51 | 1 min 36 |
| | | 370 | 450 | 530 | 610 | 685 | 770 | 845 | 980 |