

**APPROCHE AUX INSTRUMENTS**

**MARSEILLE PROVENCE**

Instrument approach

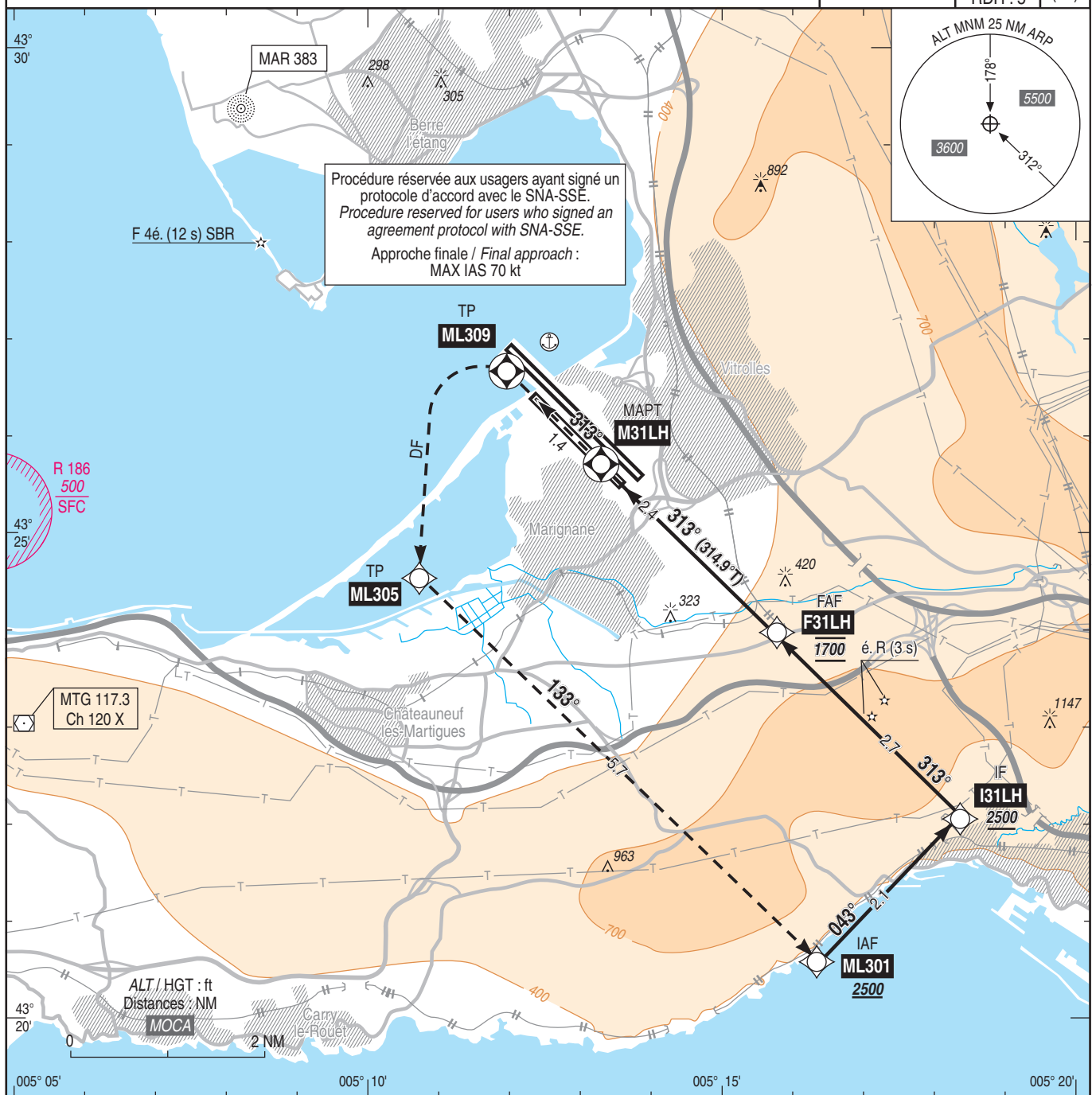
CAT H

ALT AD : 70, DTHR : 61 (3 hPa)

RNP H RWY 31L

FREQ : voir/see AD 2 LFML COM 01

<b>RNP APCH</b> LPV seulement/only	<b>EGNOS</b> Ch 52563 <b>E31A</b> RDH : 5	<b>VAR</b> 2°E (20)
---------------------------------------	--	---------------------------



API : Monter dans l'axe vers ML309. A ML309, tourner à gauche vers ML305 puis ML301 en montée vers 2500 (2439). Missed APCH : Climb straight ahead up to ML309. At ML309, turn left to ML305 then ML301 climbing up to 2500 (2439)	<table border="1"> <tr> <td>TP ML309</td> <td>MAPT M31LH</td> <td>FAF F31LH</td> <td>IF I31LH</td> </tr> <tr> <td>1.4</td> <td>0</td> <td>2.4</td> <td>5.1</td> </tr> </table>	TP ML309	MAPT M31LH	FAF F31LH	IF I31LH	1.4	0	2.4	5.1
TP ML309	MAPT M31LH	FAF F31LH	IF I31LH						
1.4	0	2.4	5.1						

MAPT ← (NM) (1)

MNM AD : distances verticales en pieds, RVR en mètres / vertical distances in feet, RVR in metres. REF HGT : ALT DTHR

CAT	LPV		(1) Point d'aboutissement du guidage vertical : 5 ft au-dessus du point situé 300 m en aval DTHR RWY 31R. Ignorer indication PAPI. (1) Vertical guidance slope ending : 5 ft above point located 300 m before DTHR RWY 31R. Ignore PAPI indication .
	DA (H)	RVR	
H	370 (300)	1400	

Observations / Remarks : Panne de guidage GNSS lors de l'approche / Loss of GNSS guidance during approach : voir/see AIP ENR 1.5.