

APPROCHE AUX INSTRUMENTS

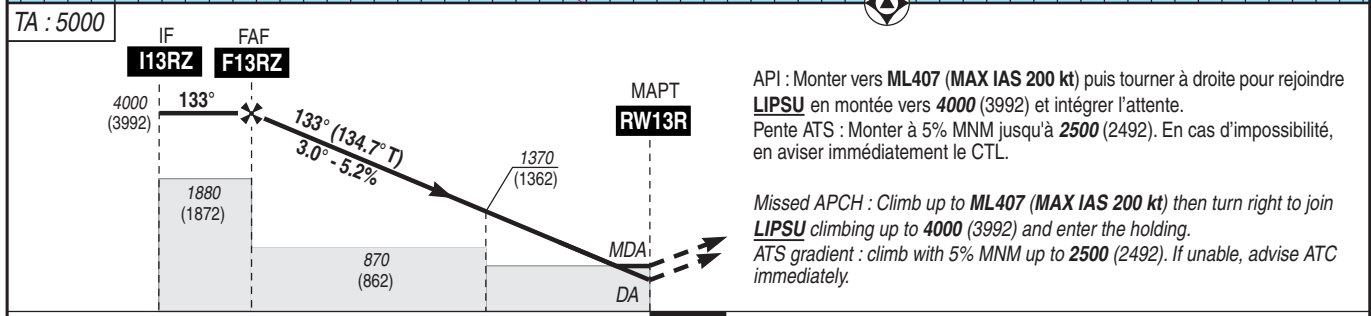
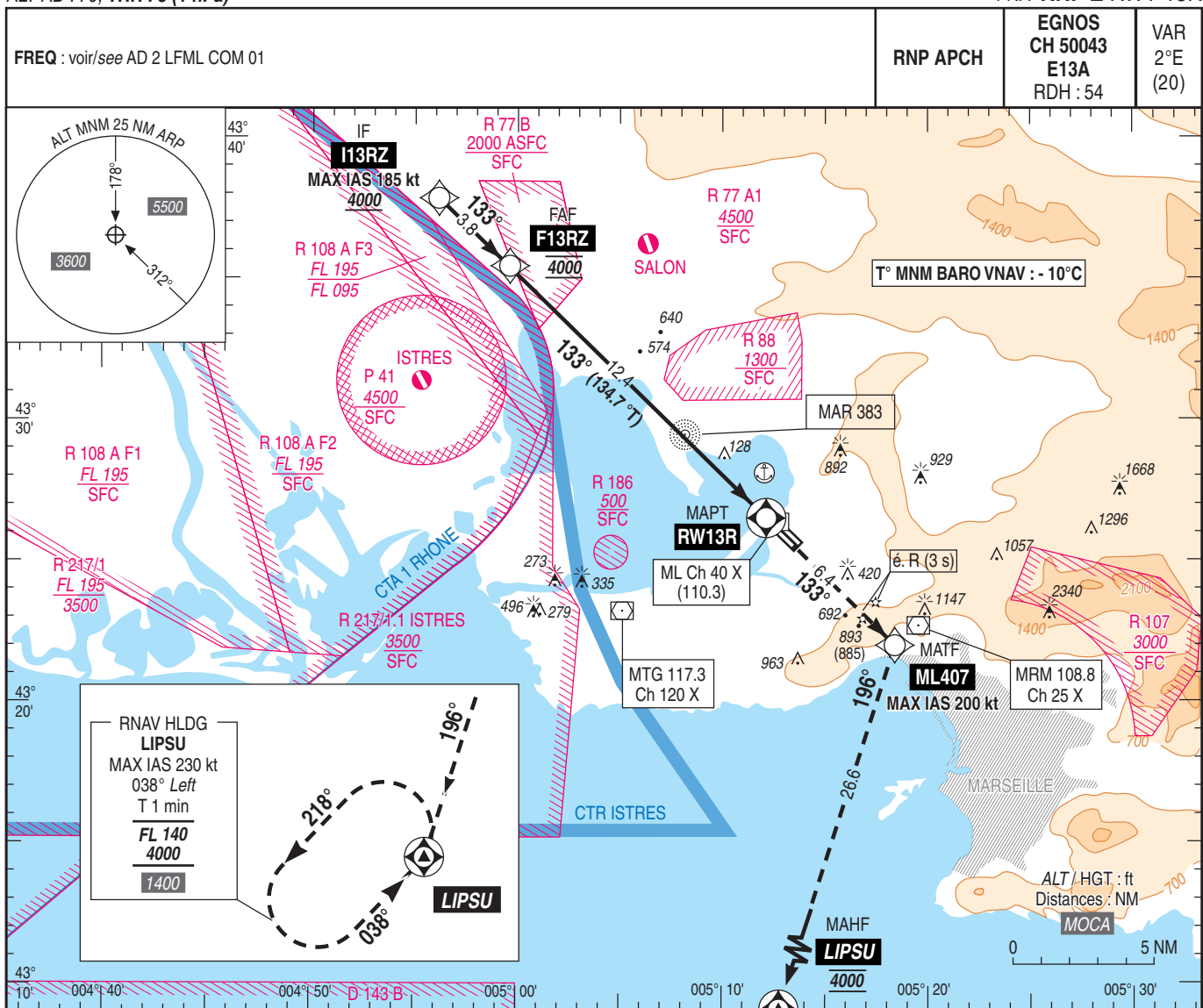
MARSEILLE PROVENCE

Instrument approach

CAT A B C D

ALT AD : 70, THR : 8 (1 hPa)

FNA RNP Z RWY 13R



TA : 5000
MNM AD : distances verticales en pieds, RVR et VIS en mètres / vertical distances in feet, RVR and VIS in metres. REF HGT : ALT THR

CAT	LPV 2.5 % ⁽²⁾			LNAV-VNAV 2.5 % ⁽²⁾			LNAV			MVL / Circling ⁽¹⁾		DIST RW13R
	DA (H)	RVR	OCH	DA (H)	RVR	OCH	MDA (H)	RVR	OCH	MDA (H)	VIS	
A	360 (360)	1500	352	400 (390)	1500	390	490 (480)	1500	478	740 (740)	1500	NM 12 11 10 9 8 ALT 3880 3570 3250 2930 2610 (HGT) (3872) (3562) (3242) (2922) (2602)
B	410 (400)	1500	395	410 (400)	1500	400	510 (500)	1500	498	1190 (1180)	1600	7 6 5 4 3 2 2290 1970 1660 1340 1020 700 (2282) (1962) (1652) (1332) (1012) (692)
C	500 (490)	2300	483	510 (500)	2300	495	600 (590)	2400	590	1370 (1360)	2400	
D	510 (500)	2300	494	530 (530)	2400	522	620 (610)	2400	609	1550 (1540)	3600	

Observations / Remarks : Panne de guidage GNSS durant l'approche / Loss of GNSS guidance during approach : voir / see AIP ENR 1.5.
(1) MVL interdites à l'Est de la piste / Circling prohibited East of RWY.
(2) Compléments minima voir AD 2 LFML IAC RWY 13R FNA RNP Z MINIMA / Other minima see AD 2 LFML IAC RWY 13R FNA RNP Z MINIMA.

FAF - MAPT	12.4 NM	70 kt	85 kt	100 kt	115 kt	130 kt	145 kt	160 kt	185 kt
VSP (ft/min)		10 min 37	8 min 45	7 min 26	6 min 28	5 min 43	5 min 07	4 min 39	4 min 01