

**APPROCHE AUX INSTRUMENTS**

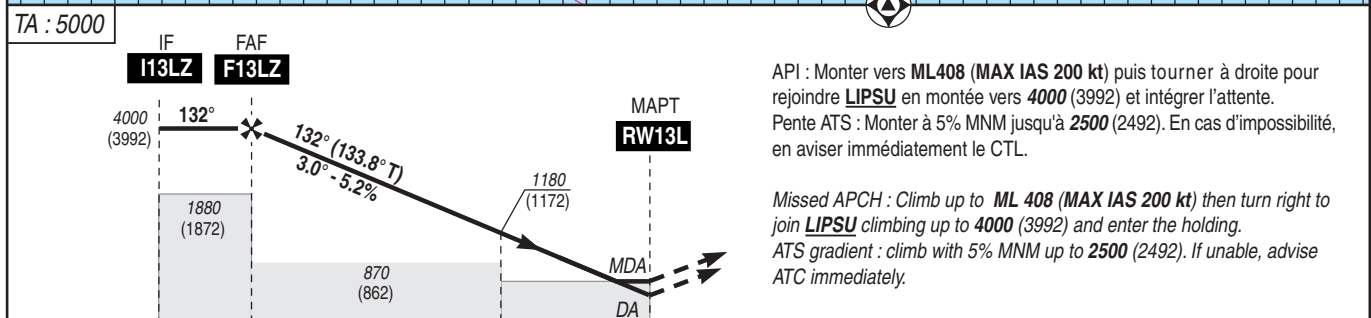
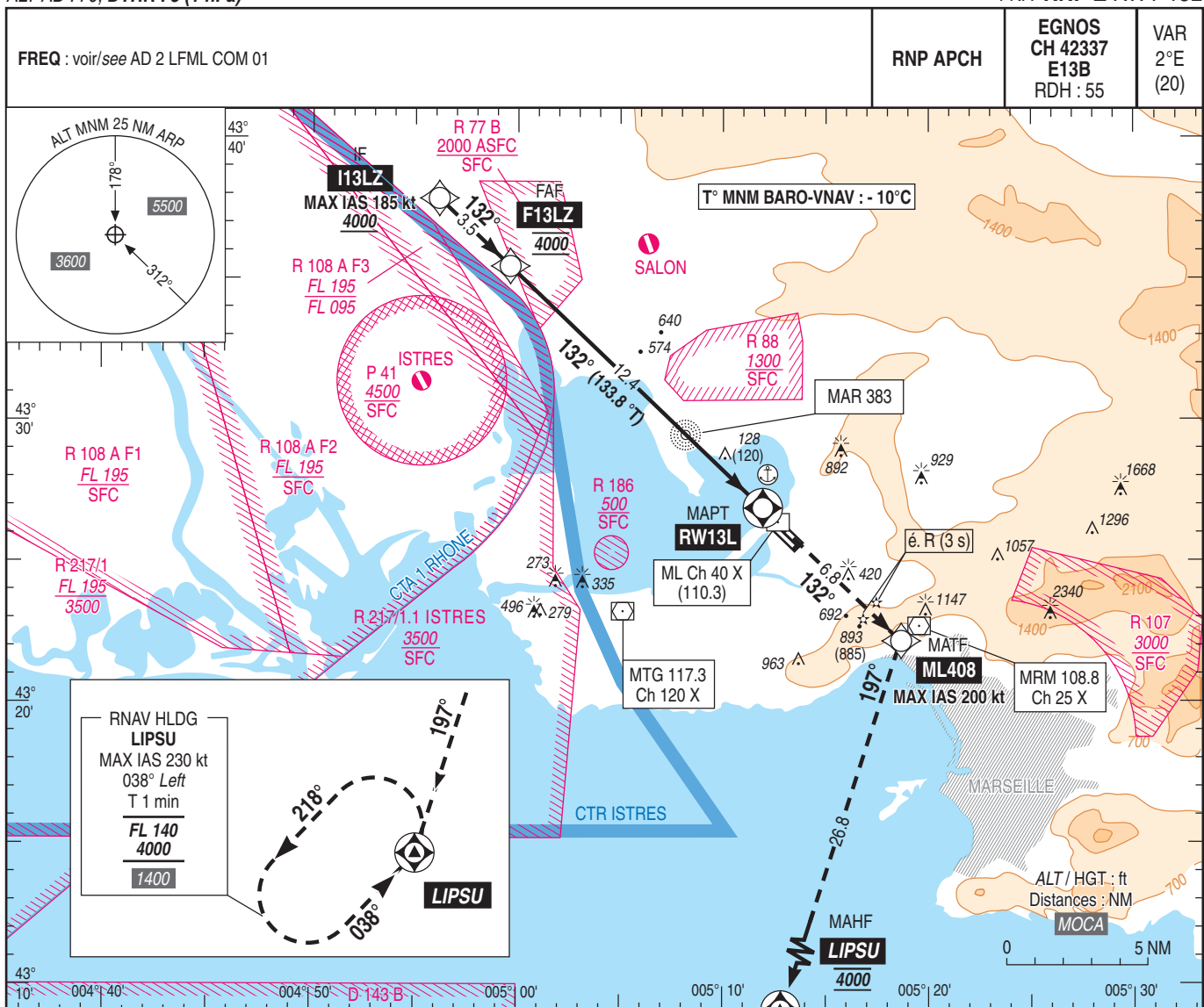
**MARSEILLE PROVENCE**

Instrument approach

CAT A B C D

ALT AD : 70, DTNR : 8 (1 hPa)

FNA RNP Z RWY 13L



API : Monter vers **ML408** (MAX IAS 200 kt) puis tourner à droite pour rejoindre **LIPSU** en montée vers **4000** (3992) et intégrer l'attente.  
Pente ATS : Monter à 5% MNM jusqu'à **2500** (2492). En cas d'impossibilité, en aviser immédiatement le CTL.

Missed APCH : Climb up to **ML 408** (MAX IAS 200 kt) then turn right to join **LIPSU** climbing up to **4000** (3992) and enter the holding.

ATS gradient : climb with 5% MNM up to **2500** (2492). If unable, advise ATC immediately.

TA : 5000  
MNM AD : distances verticales en pieds, RVR et VIS en mètres / vertical distances in feet, RVR and VIS in metres. REF HGT : ALT DTHR

| CAT | LPV 2.5% (2) |      |     | LNAV-VNAV 2.5% (2) |      |     | LNAV      |      |     | MVL / Circling (1) |      | DIST RW13L |             |             |             |             |             |           |
|-----|--------------|------|-----|--------------------|------|-----|-----------|------|-----|--------------------|------|------------|-------------|-------------|-------------|-------------|-------------|-----------|
|     | DA (H)       | RVR  | OCH | DA (H)             | RVR  | OCH | MDA (H)   | RVR  | OCH | MDA (H)            | VIS  | NM         | 12          | 11          | 10          | 9           | 8           |           |
| A   | 310 (300)    | 900  | 299 | 400 (390)          | 1400 | 385 | 440 (440) | 1500 | 431 | 740 (740)          | 1500 | ALT (HGT)  | 3880 (3872) | 3570 (3562) | 3250 (3242) | 2930 (2922) | 2610 (2602) |           |
| B   | 370 (360)    | 1200 | 359 | 410 (400)          | 1400 | 394 | 470 (460) | 1500 | 460 | 1190 (1180)        | 1600 |            | 7           | 6           | 5           | 4           | 3           |           |
| C   | 460 (450)    | 1700 | 448 | 470 (460)          | 1700 | 460 | 550 (540) | 2000 | 538 | 1370 (1360)        | 2400 |            | 2290 (2282) | 1970 (1962) | 1660 (1652) | 1340 (1332) | 1020 (1012) | 700 (692) |
| D   | 470 (460)    | 1700 | 458 | 500 (490)          | 1800 | 486 | 570 (560) | 2100 | 555 | 1550 (1540)        | 3600 |            |             |             |             |             |             |           |

Observations / Remarks : Panne de guidage GNSS durant l'approche / Loss of GNSS guidance during approach : voir / see AIP ENR 1.5.  
(1) MVL interdite à l'Est de la piste / Circling prohibited East of RWY.  
(2) Compléments minima voir AD 2 LFML IAC RWY 13L FNA RNP Z MINIMA / Other minima see AD 2 LFML IAC RWY 13L FNA RNP Z MINIMA.

|              |         |           |          |          |          |          |          |          |          |
|--------------|---------|-----------|----------|----------|----------|----------|----------|----------|----------|
| FAF - MAPT   | 12.4 NM | 70 kt     | 85 kt    | 100 kt   | 115 kt   | 130 kt   | 145 kt   | 160 kt   | 185 kt   |
| VSP (ft/min) |         | 10 min 37 | 8 min 45 | 7 min 26 | 6 min 28 | 5 min 43 | 5 min 07 | 4 min 39 | 4 min 01 |