

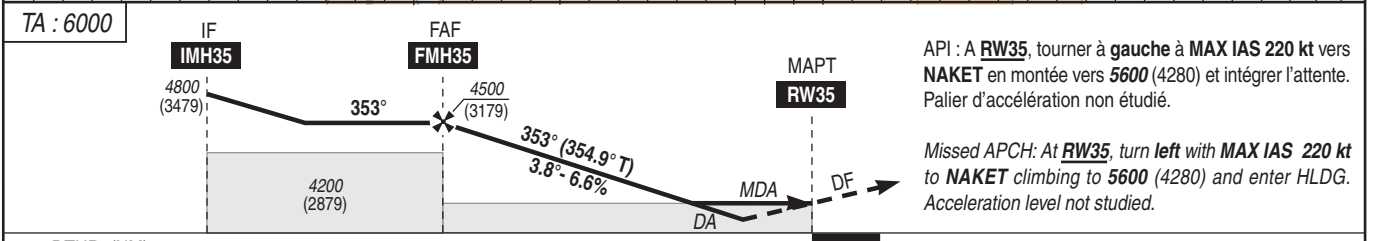
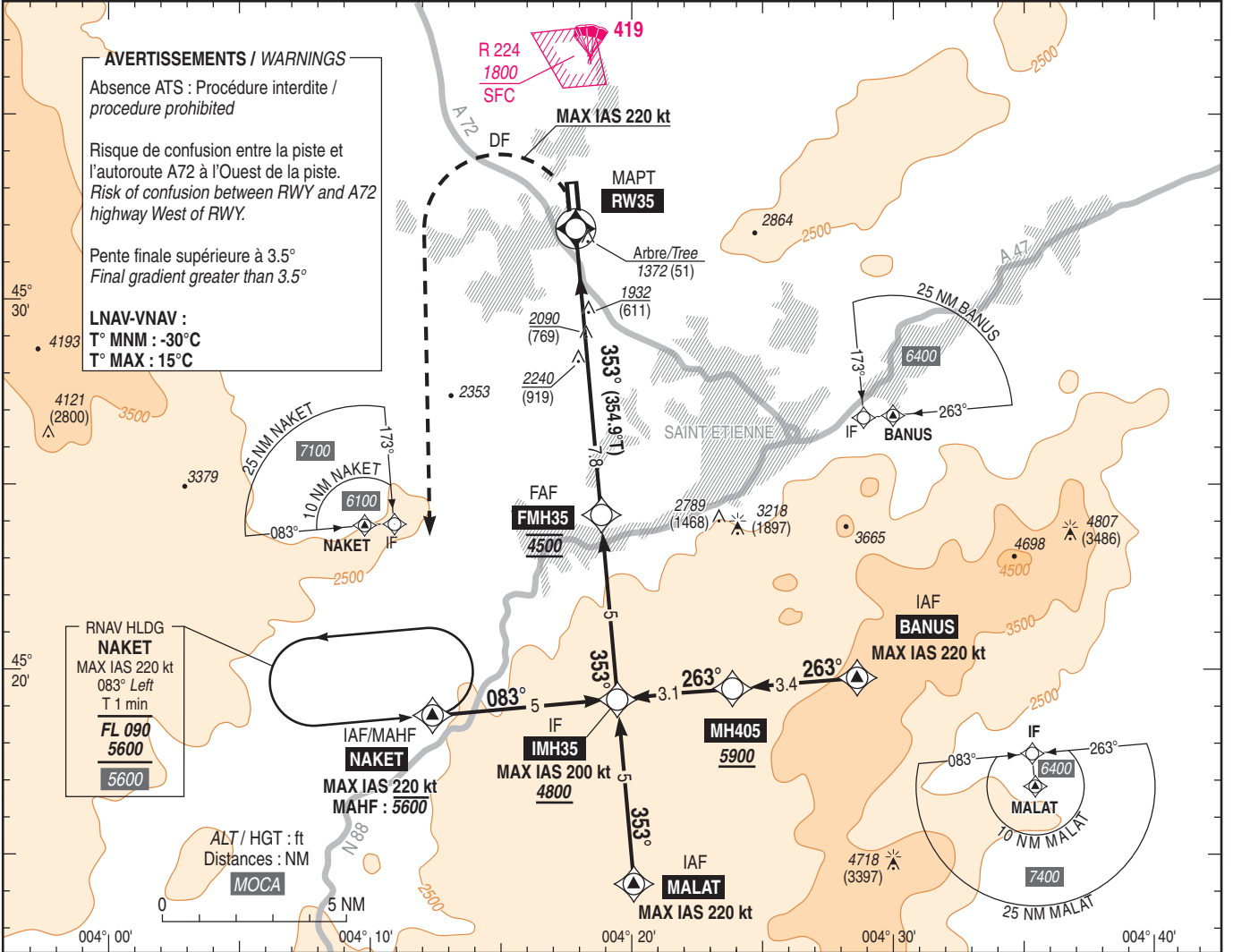
APPROCHE AUX INSTRUMENTS
Instrument approach
CAT A B C

SAINT ETIENNE LOIRE

ALT AD : 1325, DTHR : 1321 (48 hPa)

RNP RWY 35

ATIS SAINT ETIENNE : 132.805 APP : CLERMONT Approche/Approach 120.500 TWR : SAINT ETIENNE Tour/Tower 119.250	RNP APCH	EGNOS Ch70896 E35A TCH : 49	VAR 2°E (20)
--	----------	--------------------------------------	--------------------



MNM AD : distances verticales en pieds, RVR et VIS en mètres / vertical distances in feet, RVR and VIS in metres. REF HGT : ALT DTHR

CAT	LPV (1)			LNAV-VNAV (1)			LNAV (1)			MVL / Circling (2)		DIST RW35					
	DA (H)	RVR	OCH	MDA (H)	RVR	OCH	MDA (H)	RVR	OCH	MDA (H)	VIS	NM	7	6	5	4	3
A	2350 (1030)		1027	2520 (1200)		1199	2520 (1200)		1199	2520 (1200)		ALT	4195	3790	3385	2985	2580
B	2370 (1050)	4900	1044	2520 (1200)	5000	1199	2520 (1200)	5000	1199	2520 (1200)	5000	(HGT)	(2874)	(2469)	(2064)	(1664)	(1259)
C	2420 (1090)		1090	2660 (1340)		1207	2660 (1340)		1207	2660 (1340)							

Observations / Remarks : (1) Procédures interdites de nuit si PAPI U/S / Procedures prohibited at night if PAPI U/S. (2) MVL interdites à l'Est de la piste et de nuit si PAPI U/S / Circling prohibited East of RWY and at night if PAPI U/S.

FAF - RW35	7.8 NM	70 kt 6 min 40	85 kt 5 min 29	100 kt 4 min 40	115 kt 4 min 03	130 kt 3 min 35	160 kt 2 min 55
VSP (ft/min)		470	570	670	770	870	1070