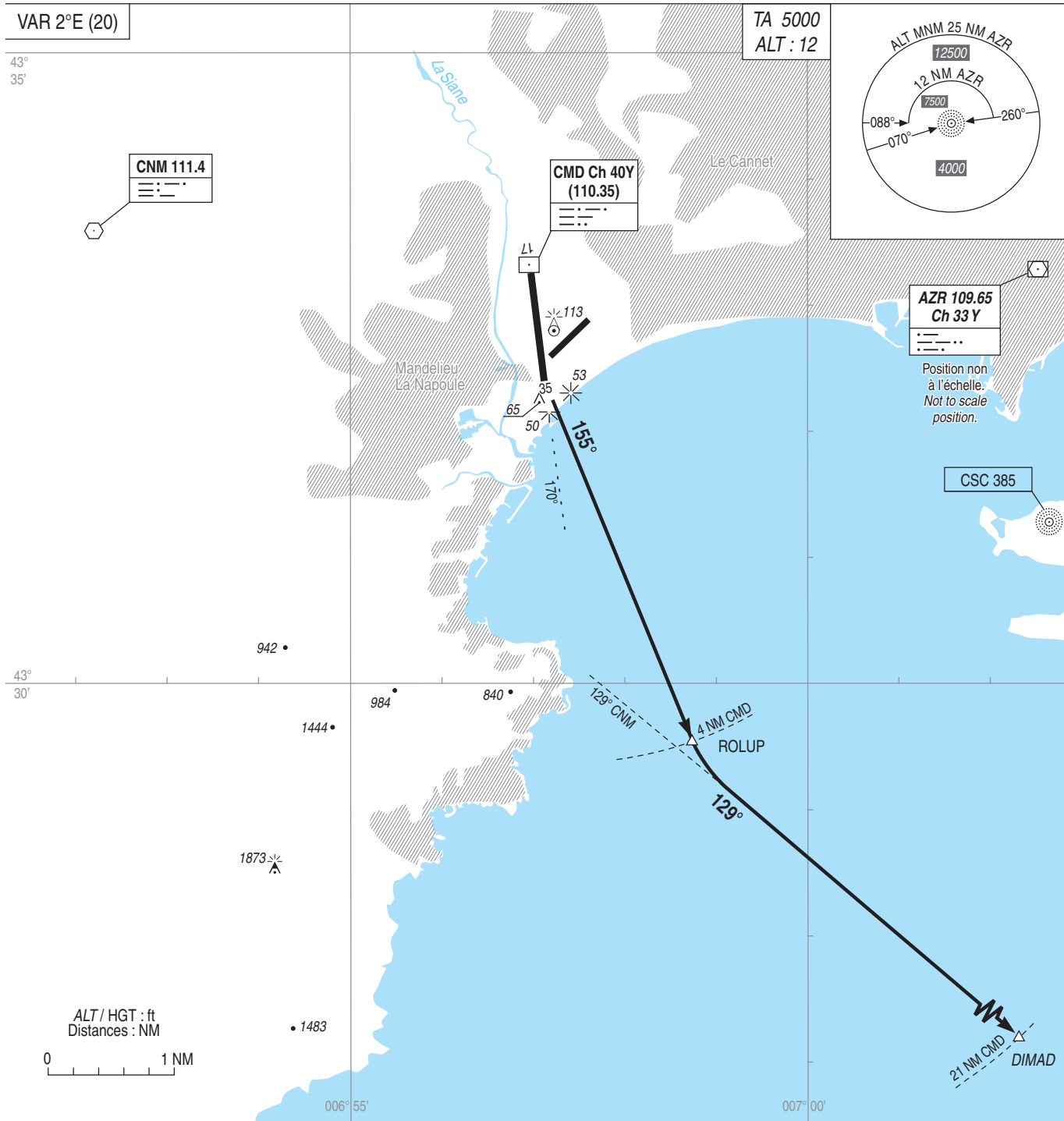


**CANNES MANDELIEU**  
**Départs initiaux RWY 17 "K" via DIMAD**  
**Initial Departures RWY 17 "K" via DIMAD**  
(Protégés pour/Protected for CAT A, B, C)

ATIS CANNES 130.480

APP : NICE Approche/Approach 120.655 (I)  
NICE Départ/Departure 130.830 (H) - 125.580 (s)

TWR : CANNES Tour/Tower 118.625  
CANNES Sol/Ground 121.805



**DEP initial RWY 17 "K" via DIMAD :**

Monter RM 155° (ne pas tourner avant l'extrémité de piste).  
A ROLUP (D4 CMD) à gauche RDL 129° CNM (RM 129°) jusqu'à DIMAD.  
Monter à 2000 AMSL.

**Initial DEP RWY 17 "K" via DIMAD :**

Climb MAG 155° (do not turn before reaching DER).  
At ROLUP (D4 CMD) turn left RDL 129° CNM (MAG 129°) to DIMAD.  
Climb up to 2000 AMSL.