

APPROCHE AUX INSTRUMENTS

AURILLAC

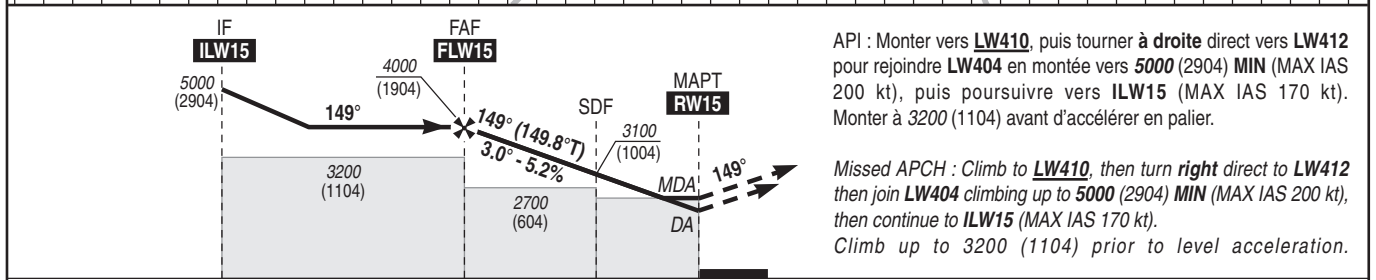
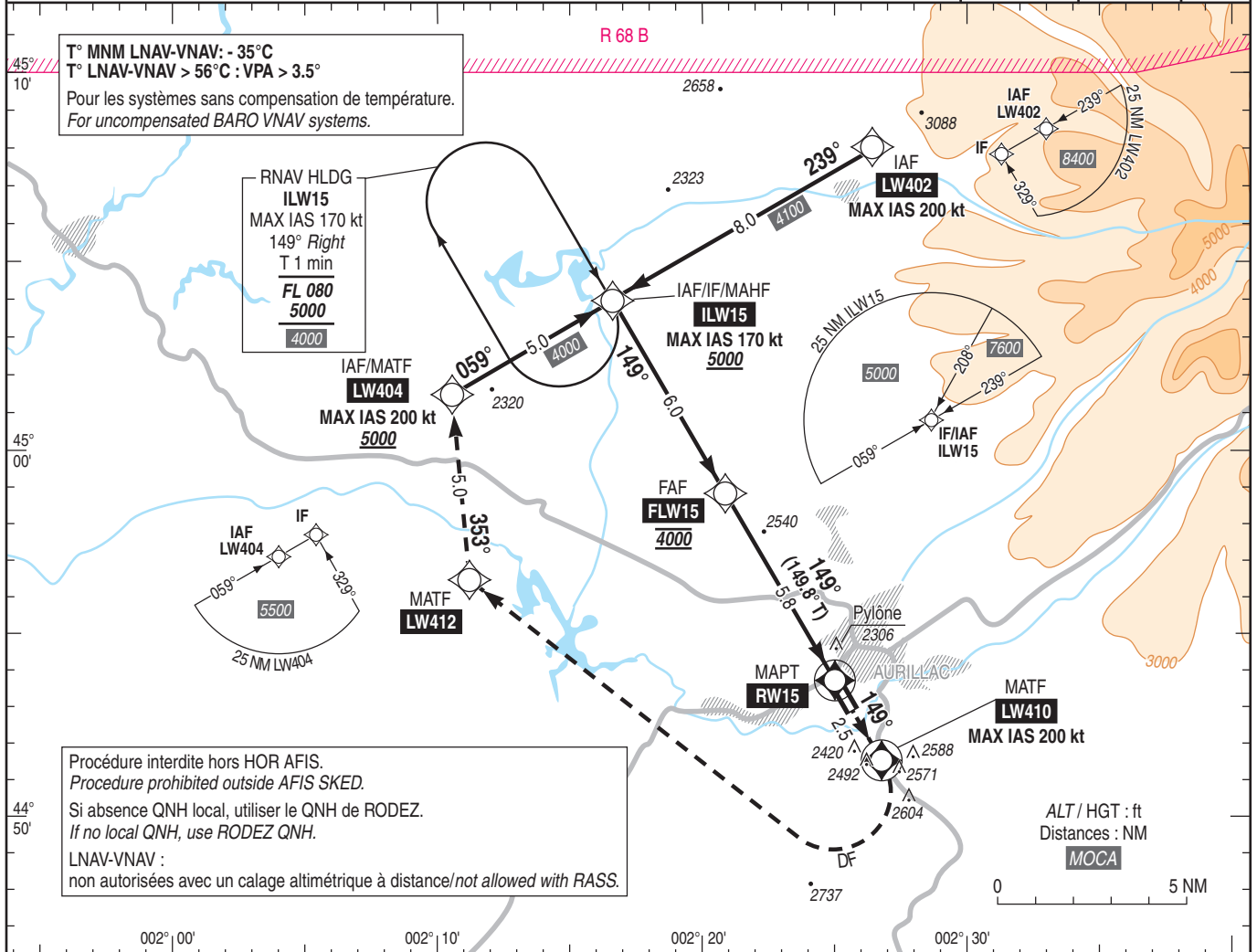
Instrument approach

CAT A B C

ALT AD : 2096, THR : 2096 (75 hPa)

RNP RWY 15

APP : NIL TWR : NIL AFIS : AURILLAC Information 118.325	RNP APCH	EGNOS Ch 83462 E15A RDH : 49	VAR 1° E (20)
---	----------	---------------------------------------	---------------------



→ THR (NM) 11.8 5.8 3.0 0

MNM AD : distances verticales en pieds, RVR et VIS en mètres / vertical distances in feet, RVR and VIS in metres. REF HGT : ALT THR

CAT	(1) LPV			LNAV-VNAV			LNAV			(2)(3) MVL / Circling		(2)(3) MVL/Circling sans QNH local without local QNH		DIST RW15			
	DA (H)	RVR	OCH	DA (H)	RVR	OCH	MDA (H)	RVR	OCH	MDA (H)	VIS	MDA (H)	VIS	NM	5	4	3
A	2440 (340)	1100	335	2440 (340)	1100	335		1500		2870 (780)	1500	3010 (910)	1500		3740	3420	3100
B	2450 (350)	1200	348	2450 (350)	1200	348	2540 (450)	1500	442	2900 (810)	1600	3040 (940)	1600		1644	1324	1004
C	2460 (360)	1200	356	2470 (370)	1300	367		1700		3200 (1100)	2400	3340 (1240)	2400		2	1	
															(684)	(364)	

Observations / Remarks : (1) Pour MNM particuliers / For special MNM : voir / see AD 2 LFLW IAC RWY15 RNP MINIMA.
(2) Secteur Est interdit / East sector prohibited. (3) HJ seulement / only.
Panne de guidage GNSS lors de l'approche / Loss of GNSS guidance during approach : voir / see AIP ENR 1.5.

FAF - RW15	5.8 NM	70 kt 4 min 59	85 kt 4 min 07	100 kt 3 min 30	115 kt 3 min 03	130 kt 2 min 41	145 kt 2 min 25	160 kt 2 min 11
VSP (ft/min)		370	450	530	610	685	765	845