

APPROCHE AUX INSTRUMENTS

BOURGES

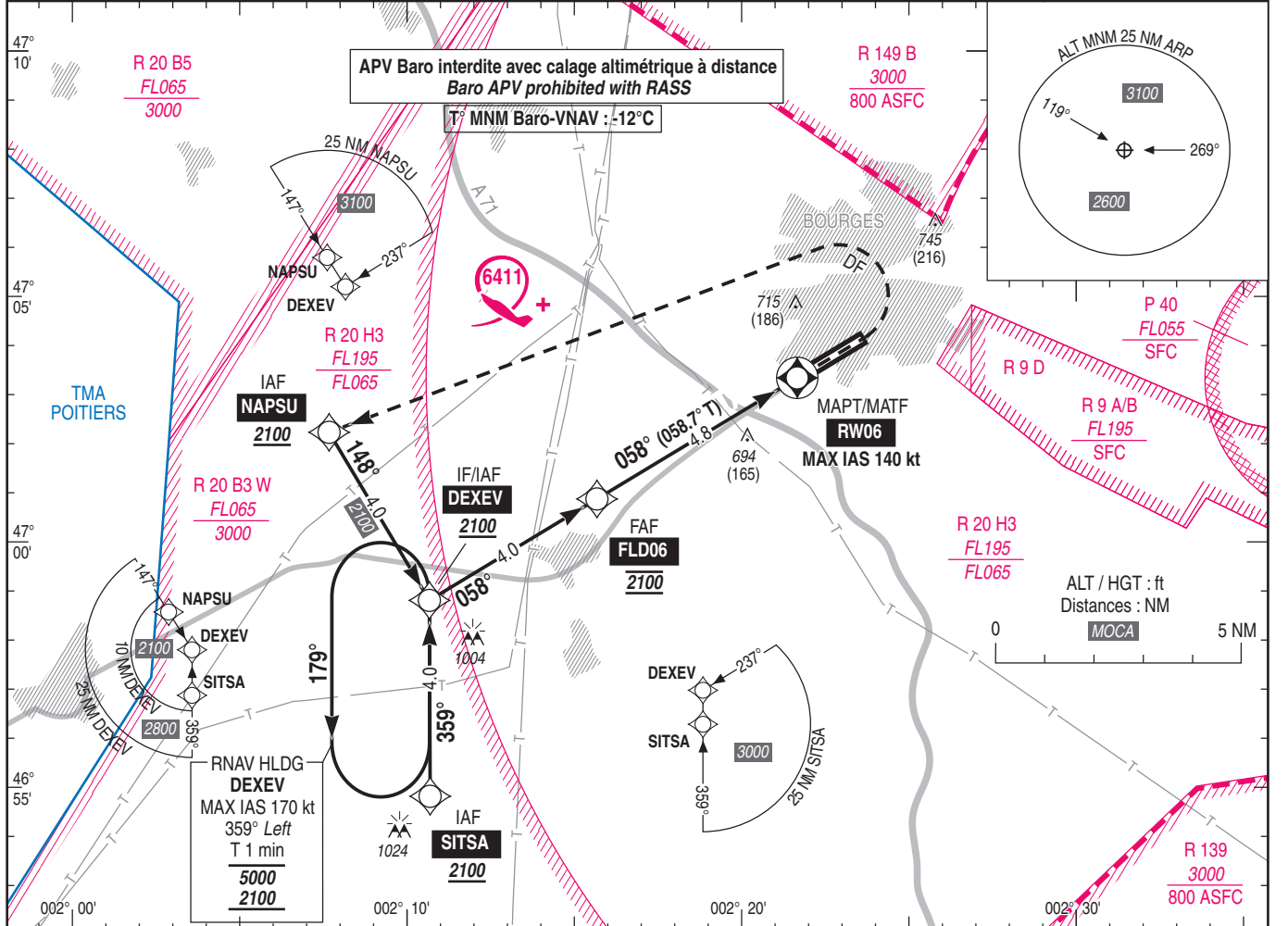
Instrument approach

CAT A B

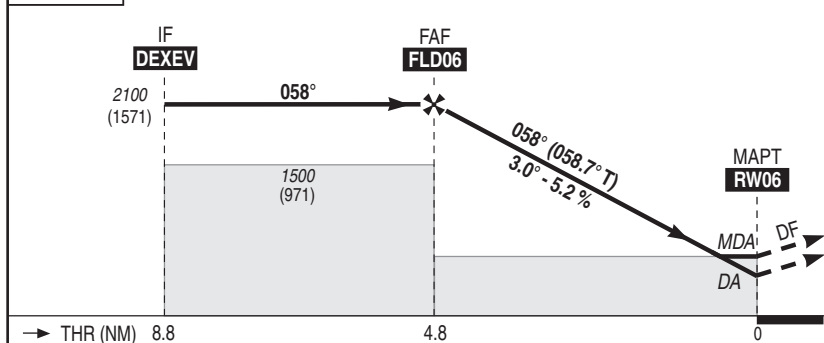
RNP Y RWY 06

ALT AD : 529 (19 hPa), THR : 529

| | | |
|--|-----------------|--------------------|
| APP : NIL TWR : NIL AFIS : BOURGES Information 119.600 (1) (1) Contact avec AVORD Approche 119.700 pendant activation des zones LF-R 20. (1) Contact with AVORD Approach 119.700 during activation of LF-R 20 areas. Absence ATS : A/A (FR seulement). Obtenir QNH de POITIERS auprès de POITIERS APP 134.100 A/A (FR only). Obtain POITIERS QNH from POITIERS APP 134.100 | RNP APCH | VAR 1°E (20) |
|--|-----------------|--------------------|



TA : 5000



API : Dès l'appareil établi en montée, tourner à **gauche** pour rejoindre directement **NAPSU**, en montée vers 2100 (1571). A **NAPSU**, tourner à **gauche** pour rejoindre **DEXEV** ou l'**attente**.
Monter à 1600 (1071) avant d'accélérer en palier.

Missed APCH : As soon as the aircraft is established climbing, turn **left** to join directly **NAPSU**, climbing up to 2100 (1571). At **NAPSU**, turn **left** to join **DEXEV** or the **holding**.
Climb up to 1600 (1071) prior to level acceleration.

MNM AD : distances verticales en pieds, RVR et VIS en mètres / vertical distances in feet, RVR and VIS in metres. REF HGT : ALT AD

| CAT | LNAV-VNAV | | | LNAV | | | MVL / Circling (2) | | MVL / Circling absence ATS (2) | | DIST RW06 | | | |
|-----|-----------|------|-----|-----------|------|-----|--------------------|------|--------------------------------|------|-----------|--------|--------|-------|
| | DA (H) | RVR | OCH | MDA (H) | RVR | OCH | MDA (H) | VIS | MDA (H) | VIS | NM | 4 | 3 | 2 |
| A | 900 (370) | 1500 | 363 | 940 (420) | 1500 | 411 | 1040 (520) | 1500 | 1440 (910) | 1500 | ALT | 1860 | 1540 | 1220 |
| B | 910 (380) | 1500 | 373 | 940 (420) | 1500 | 411 | 1040 (520) | 1600 | 1470 (940) | 1600 | (HGT) | (1331) | (1011) | (691) |

Observations / Remarks : (2) MVL interdites au Sud de la piste, zones LF-R 9 actives H24 / circling prohibited South of RWY, LF-R 9 areas active H24.

| | | | | | | | | |
|--------------|--------|----------|----------|----------|----------|----------|----------|----------|
| FAF - RW06 | 4.8 NM | 70 kt | 85 kt | 100 kt | 115 kt | 130 kt | 145 kt | 160 kt |
| VSP (ft/min) | | 4 min 06 | 3 min 22 | 2 min 52 | 2 min 30 | 2 min 12 | 1 min 59 | 1 min 48 |
| | | 370 | 450 | 530 | 610 | 690 | 770 | 850 |