

APPROCHE AUX INSTRUMENTS

FIGARI SUD CORSE

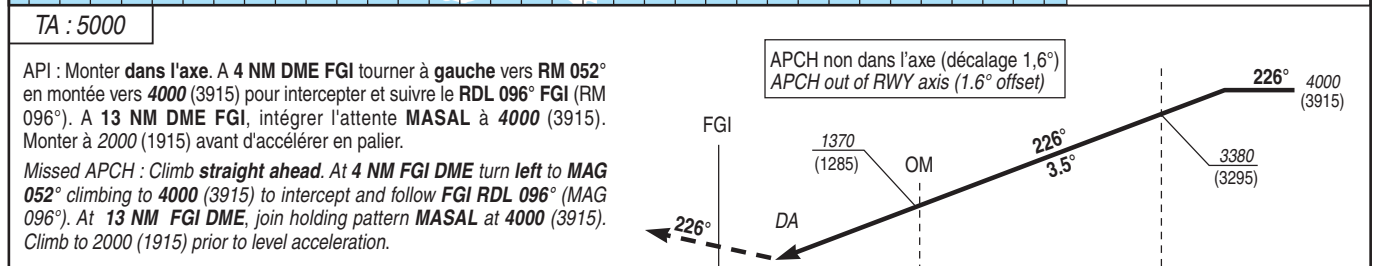
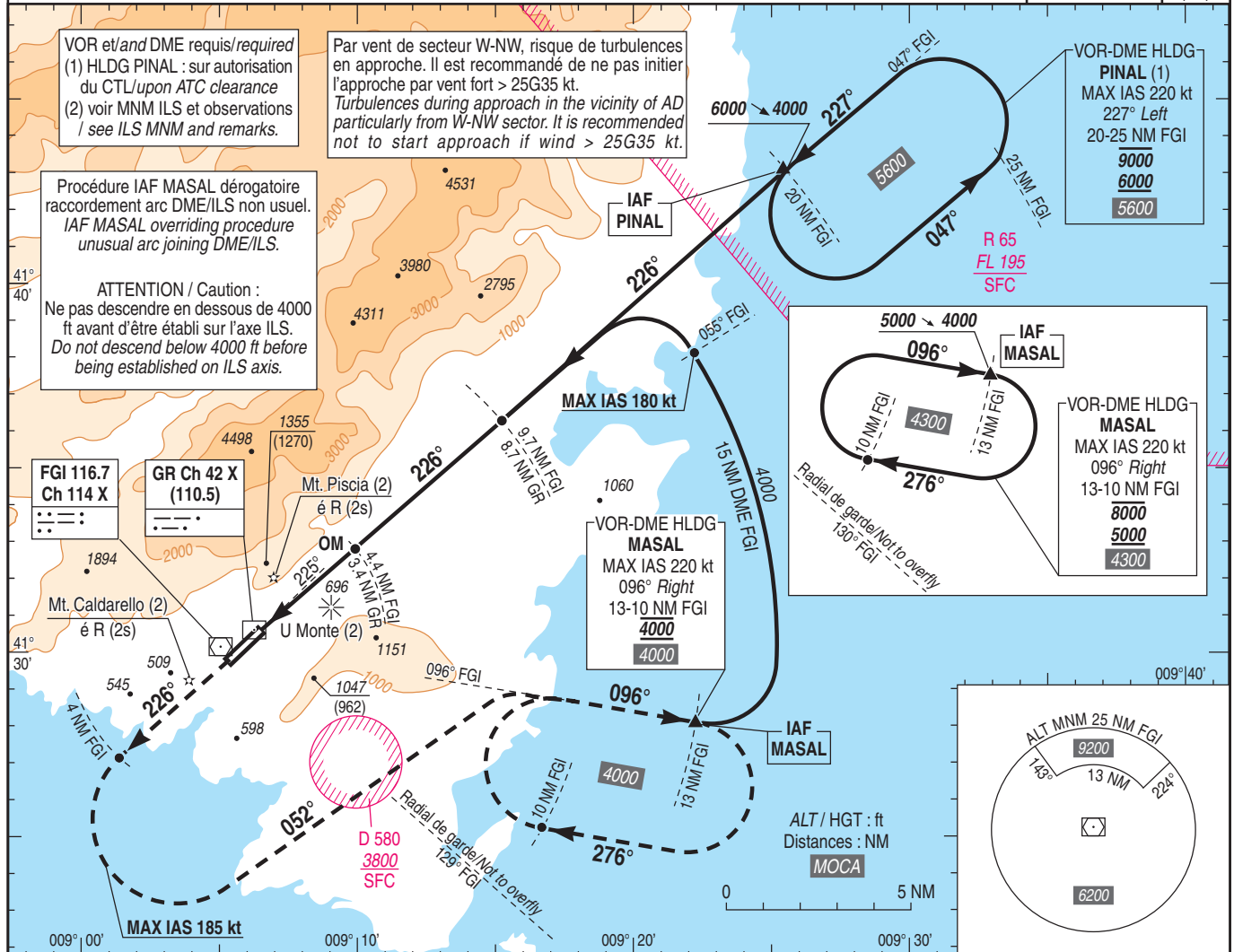
Instrument approach

CAT A B C

ALT AD : 85, THR : 85 (4 hPa)

ILS RWY 23

ATIS : FIGARI 118.730	ILS - DME	VAR
APP : AJACCIO Approche / Approach 121.050	GR 110.5	3°E
TWR : FIGARI Tour / Tower 120.300 (voir / see ADC 01)	RDH : 49	(20)



THR ← (NM)	3.3	8.6
DME GR ← (NM)	3.4	8.7
DME FGI ← (NM)	4.4	9.7

MNM AD : distances verticales en pieds, RVR et VIS en mètres / vertical distances in feet, RVR and VIS in metres. REF HGT : ALT THR

CAT	ILS (2)			MVL / Circling (3) HJ seulement/only	
	DA (H)	RVR	OCH	MDA (H)	VIS
A				1360 (1280)	1500
B	340 (250)	1300	250	1470 (1380)	1600
C				1770 (1680)	2400

Observations / Remarks : Base OCH ILS : NIL
(2) Procédure inutilisable de nuit si indisponibilité des feux : U Monte, Piscia, Caldarello selon conditions (voir AD 2 LFKF.23).
Procedure cannot be used at night if following lights are not operating : U Monte, Piscia, Caldarello according to conditions (see AD 2 LFKF.23).
(3) MVL interdite au Nord-Ouest de la piste. Circuit AD RWY 05 : Droite / Circling prohibited North-West of RWY. Right hand circuit RWY 05.

OM - THR	3.3 NM	70 kt 2 min 50	85 kt 2 min 20	100 kt 1 min 59	115 kt 1 min 43	130 kt 1 min 31	145 kt 1 min 22	160 kt 1 min 14
VSP (ft/min)		430	530	620	710	800	900	990