

APPROCHE AUX INSTRUMENTS

FIGARI SUD CORSE

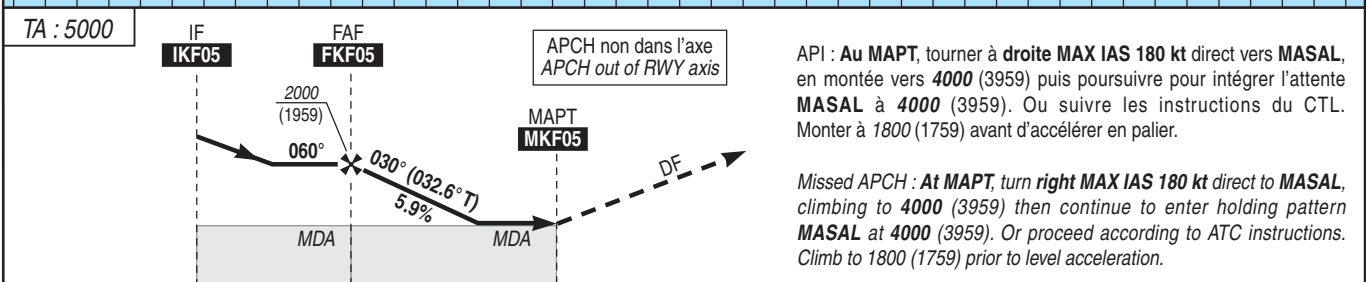
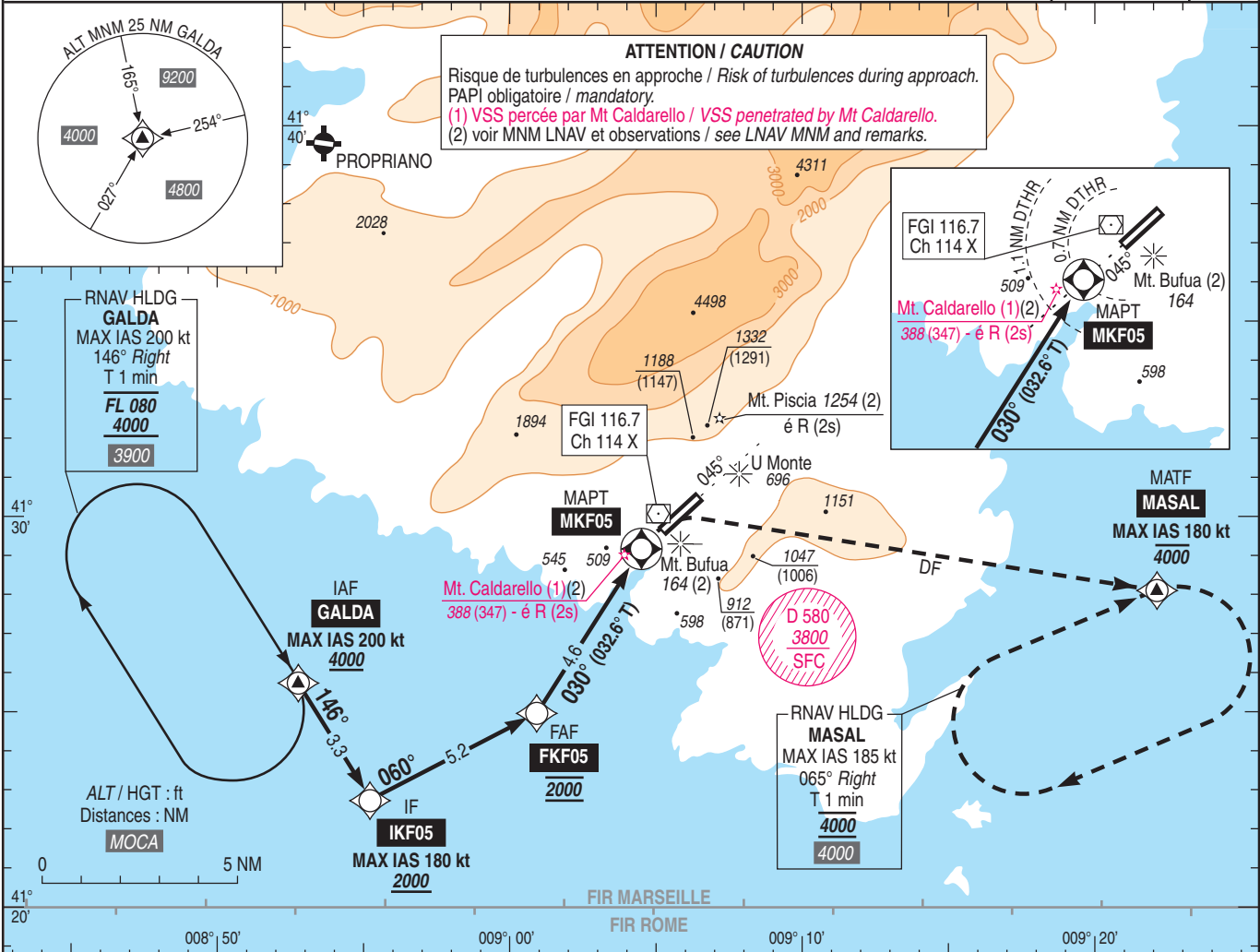
Instrument approach

CAT A B C

ALT AD : 85, DTHR : 41 (2 hPa)

RNP RWY 05

ATIS : FIGARI 118.730 APP : AJACCIO Approche / Approach 121.050 TWR : FIGARI Tour / Tower 120.300	RNP APCH	VAR 3° E (20)
---	----------	---------------------



→ MKF05 (NM)	9.8	4.6	0	0.7
→ DTHR 05 (NM)	10.5	5.3	0	0

MNM AD : distances verticales en pieds, RVR et VIS en mètres / vertical distances in feet, RVR and VIS in metres. REF HGT : ALT DTHR

CAT	LNAV (2) API 2.5 %			LNAV (2) API 3 %			LNAV (2) API 4 %			LNAV (2) API 5 %			MVL / Circling (3) HJ seulement Daytime only			DIST MKF05			
	MDA (H)	RVR	OCH	MDA (H)	RVR	OCH	MDA (H)	RVR	OCH	MDA (H)	RVR	OCH	MDA (H)	VIS	OCH	NM	4	3	2
A	1150 (1110)	5000	1105	1110 (1070)	4900	1061	1020 (980)	4500	973	940 (900)	4000	896	1400 (1360)	5000	1357	ALT	1790	1430	1060
B													1540 (1500)	5000	1492	(HGT)	(1749)	(1389)	(1019)
C	1170 (1130)	5000	1122	1130 (1090)	4900	1082	1050 (1010)	4900	1001	970 (920)	4300	920	1780 (1740)	5000	1734				

Observations / Remarks : Panne de guidage GNSS durant l'approche / Loss of GNSS guidance during approach : voir / see AIP ENR 1.5.
 (2) Procédure inutilisable de nuit si indisponibilité des feux suivants : feux à éclats séquentiels, feux d'identification de piste 05 et Piscia, Bufua, Caldarello selon conditions / Procedure cannot be used at night if the following lights are not operating : flashing sequential lights, RWY 05 identification lights and Piscia, Bufua, Caldarello according to conditions : voir/see AD 2 LFKF.23.
 (3) MVL interdite au Nord-Ouest de la piste / Circling prohibited North-West of runway.

FKF05 - MKF05	4.6 NM	70 kt 3 min 56	85 kt 3 min 14	100 kt 2 min 45	115 kt 2 min 24	130 kt 2 min 07	145 kt 1 min 54	160 kt 1 min 43
VSP (ft/min)		420	510	600	690	780	870	960