

APPROCHE AUX INSTRUMENTS

CALVI SAINTE CATHERINE

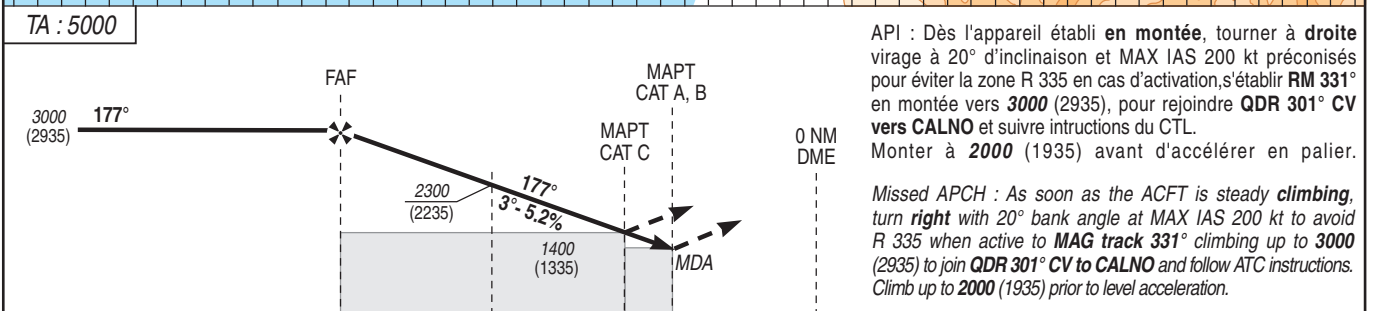
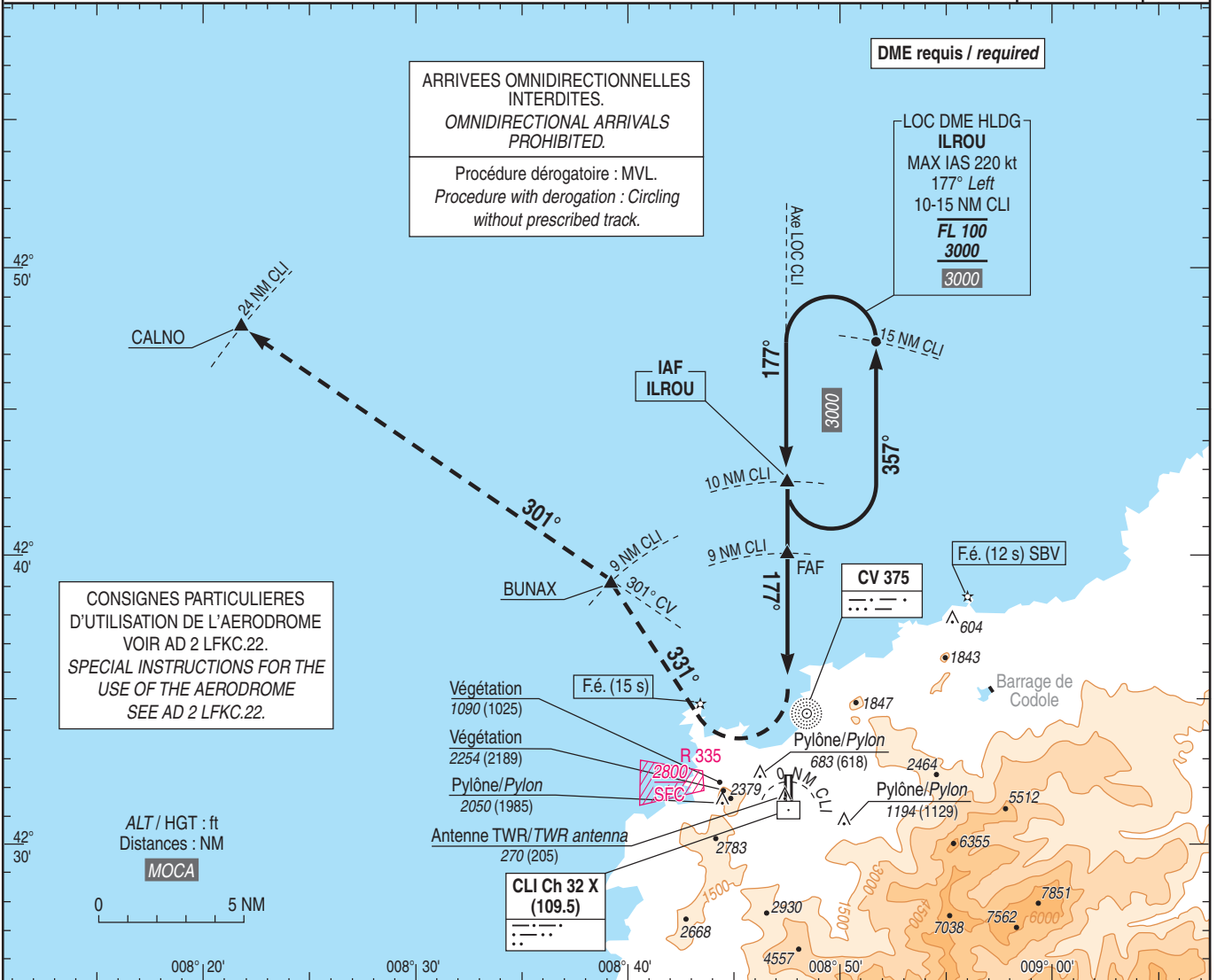
Instrument approach

CAT A B C

ALT AD : 210, THR : 65 (3 hPa)

LOC RWY 18

ATIS CALVI : 131.180 APP : BASTIA Approche/Approach : 123.825 - 127.255 (s) TWR : CALVI Tour/Tower : 123.200	LOC/DME CLI 109.5	VAR 3° E (20)
--	----------------------	---------------------



→ THR (NM)	8.8	6.8	4	3.2	0
→ DME CLI (NM)	9	7	4.2	3.4	0.2

MNM AD : distances verticales en pieds, RVR en mètres / Vertical distances in feet, RVR in meters. REF HGT : ALT THR

CAT	LOC			DME CLI					
	MDA (H)	RVR	OCH	NM	9	8	7	6	5
A	1150 (1090)		1083	ALT	2970	2620	2300	1980	1660
B	1150 (1090)	5500	1083	(HGT)	(2905)	(2555)	(2235)	(1915)	(1595)
C	1400 (1340)		1332						

Observations / Remarks : MVL, voir consignes particulières AD 2 LFKC.22 / Circling without prescribed track, see special instructions AD 2 LFKC.22.

FAF -THR	8.8 NM	70 kt 7 min 35	85 kt 6 min 15	100 kt 5 min 18	115 kt 4 min 37	130 kt 4 min 05	145 kt 3 min 40	160 kt 3 min 19
VSP (ft/min)		370	450	530	610	690	770	850