

APPROCHE AUX INSTRUMENTS

METZ NANCY LORRAINE

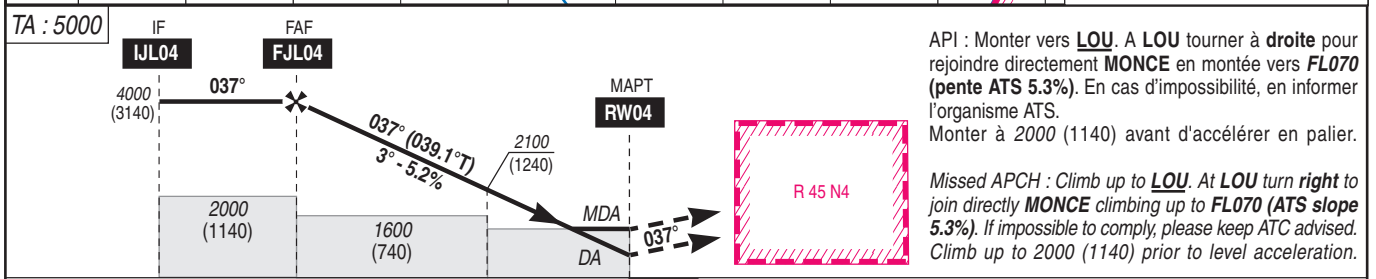
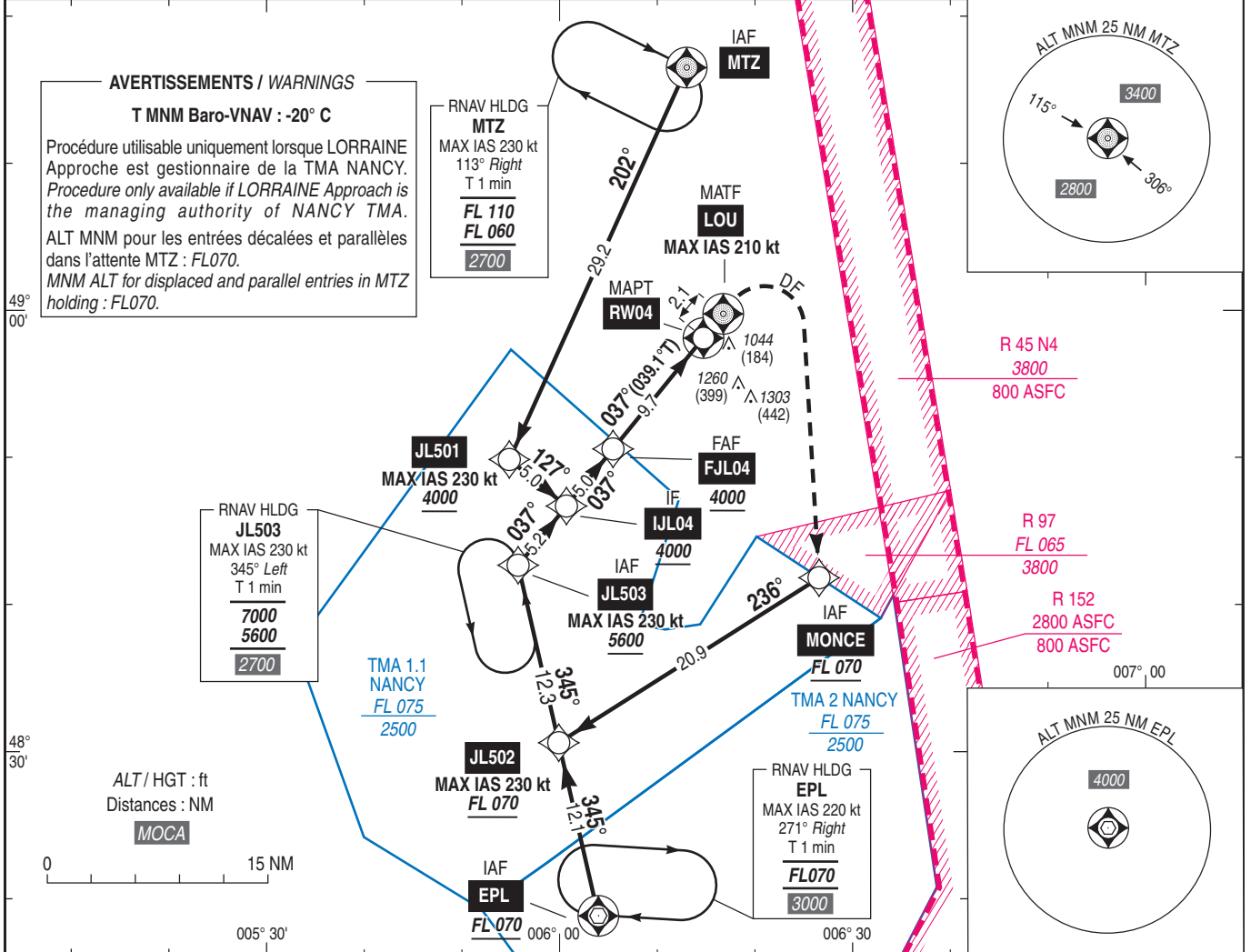
Instrument approach

CAT A B C D

ALT AD : 870, DTHR : 860 (31 hPa)

RNP RWY 04

FREQ : voir/see AD 2 LFJL COM 01	RNP APCH	EGNOS Ch 41011 E04A RDH/TCH : 49	VAR 2°E (2020)
----------------------------------	----------	---	----------------------



DTHR ← (NM) 14.7 9.7 3.7 0

MNM AD : distances verticales en pieds, RVR et VIS en mètres / vertical distances in feet, RVR and VIS in metres.

REF HGT : ALT DTHR

CAT	LPV			LNAV-VNAV			LNAV			MVL / Circling ⁽¹⁾		DIST RW04 NM ALT (HGT)	9	8	7	6
	DA (H)	RVR	OCH	MDA (H)	RVR	OCH	MDA (H)	RVR	OCH	MDA (H)	VIS					
A	1160 (300)	1400	270	1160 (300)	1400	270	1250 (390)	1500	390	1410 (550)	1500	3780 (2920)	3460 (2600)	3140 (2280)	2820 (1960)	
B			280	1160 (300)	1400	280	1250 (390)	1500	390	1410 (550)	1600					
C			290	1160 (300)	1400	295	1260 (400)	1800	394	1660 (800)	2400					
D			300	1190 (330)	1500	322	1290 (430)	2000	430	1710 (850)	3600					

Observations / Remarks : (1) MVL à l'Est sauf autorisation contraire de l'ATC / Circling to the East unless otherwise authorized by ATC.

FAF - MAPT	9.7 NM	70 kt 8 min 19	85 kt 6 min 51	100 kt 5 min 49	115 kt 5 min 04	130 kt 4 min 29	160 kt 3 min 38	185 kt 3 min 09
VSP (ft/min)		370	450	530	610	690	850	980