

**APPROCHE AUX INSTRUMENTS**

**CASTRES MAZAMET**

Instrument approach

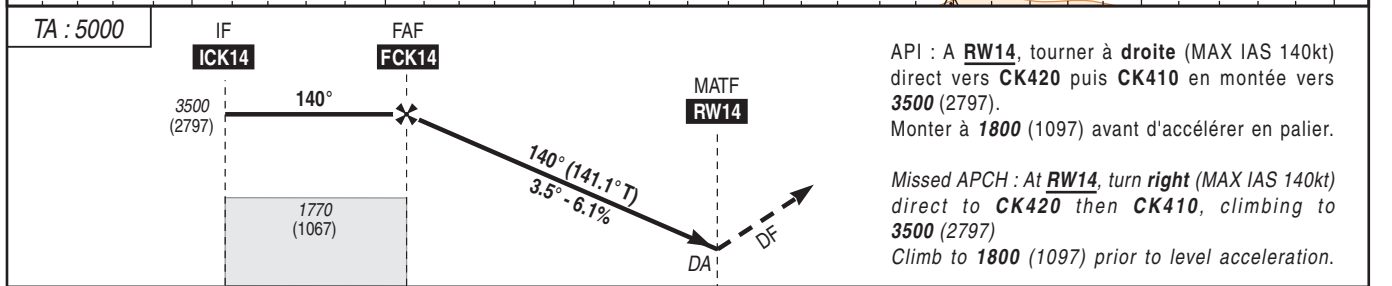
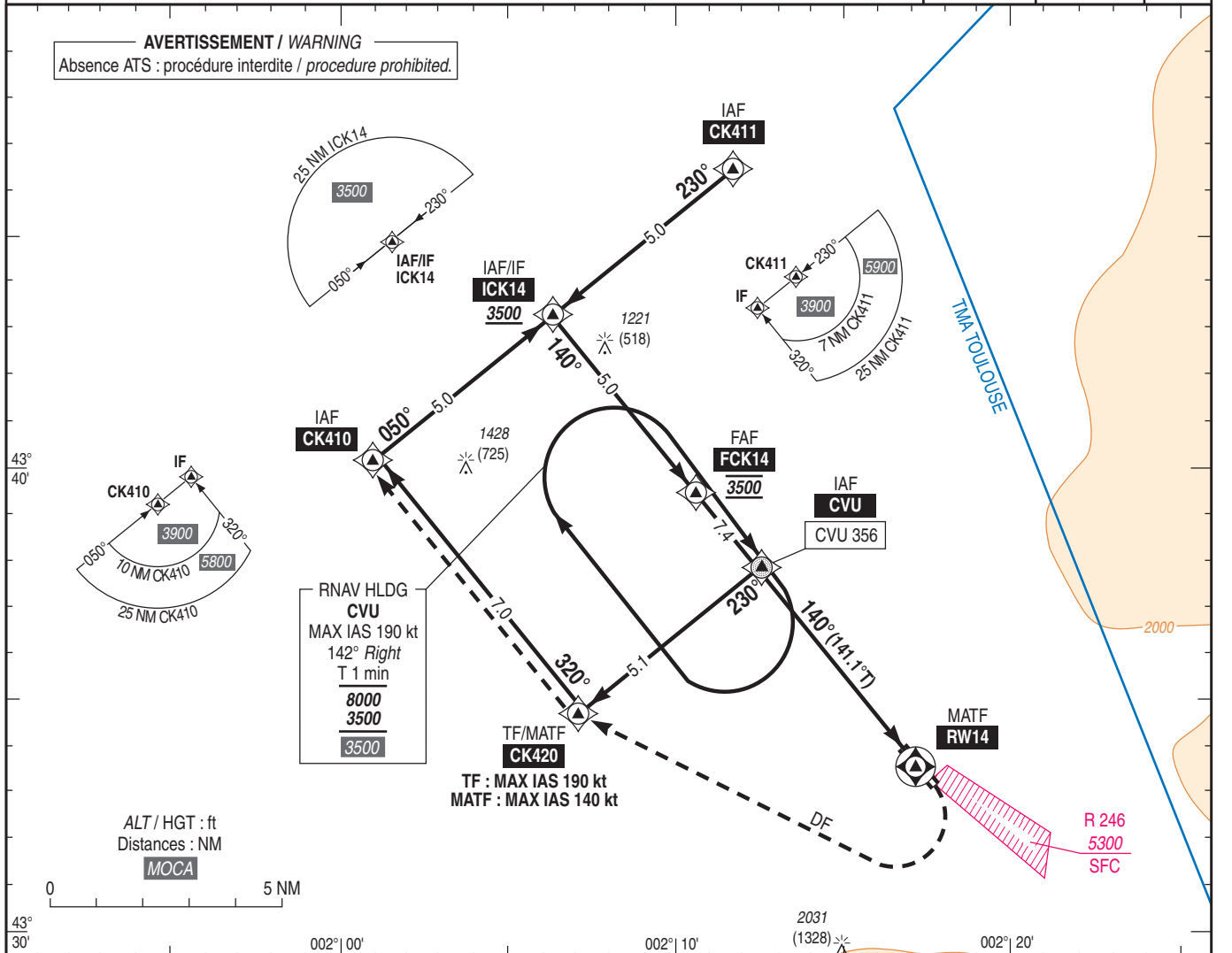
CAT A B

ALT AD : 785, DTHR : 703 (26 hPa)

RNP Z RWY 14 (LPV ONLY)

APP : TOULOUSE Approche/Approach 129.305 (1) - 123.850 (2)  
TWR : NIL  
AFIS : CASTRES Information 118.500  
(1) Au dessus de / Above FL 075  
(2) Entre/Between 1500 ASFC ou/or 3000 AMSL et/and FL 075

|          |                                      |                    |
|----------|--------------------------------------|--------------------|
| RNP APCH | EGNOS<br>CH86097<br>E14A<br>RDH : 50 | VAR<br>1°E<br>(20) |
|----------|--------------------------------------|--------------------|



|           |      |     |   |
|-----------|------|-----|---|
| DTHR (NM) | 12.4 | 7.4 | 0 |
|-----------|------|-----|---|

MNM AD : distances verticales en pieds, RVR et VIS en mètres / vertical distances in feet, RVR and VIS in metres. REF HGT : ALT DTHR

| CAT | LPV API : 2.5 % |      | LPV API : 3.0 % |      | MVL Sud (3) Circling South |      | MVL Nord (3) Circling North |      |
|-----|-----------------|------|-----------------|------|----------------------------|------|-----------------------------|------|
|     | DA (H)          | RVR  | DA (H)          | RVR  | MDA (H)                    | VIS  | MDA (H)                     | VIS  |
| A   | 1310 (610)      | 1500 | 1240 (540)      | 1500 | 1400 (700)                 | 1500 | -                           | -    |
| B   | 1330 (620)      | 1500 | 1250 (550)      | 1500 | -                          | -    | 2240 (1540)                 | 1600 |

Observations / Remarks : (3) MVL interdites au Nord de la piste pour les CAT A et au Sud pour les CAT B / Circling prohibited North of RWY for CAT A and South for CAT B.  
Panne de guidage GNSS lors de l'approche / Loss of GNSS guidance during approach : voir / see AIP ENR 1.5.

|               |        |                                |                   |                    |                    |                    |                    |
|---------------|--------|--------------------------------|-------------------|--------------------|--------------------|--------------------|--------------------|
| FAF - DTHR 14 | 7.4 NM | 70 kt<br>6 min 20              | 85 kt<br>5 min 13 | 100 kt<br>4 min 26 | 115 kt<br>3 min 51 | 130 kt<br>3 min 25 | 140 kt<br>3 min 10 |
| VSP (ft/min)  |        | Non disponible / Not available |                   |                    |                    |                    |                    |