

APPROCHE AUX INSTRUMENTS

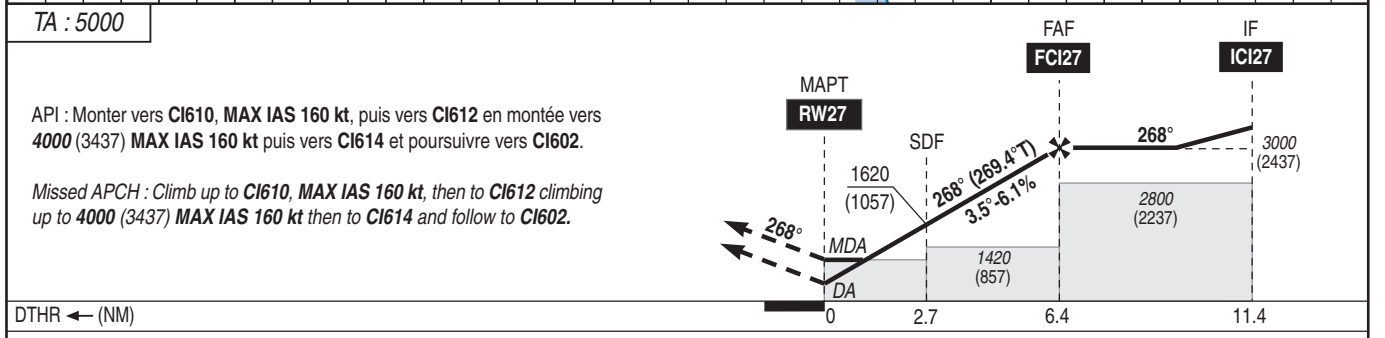
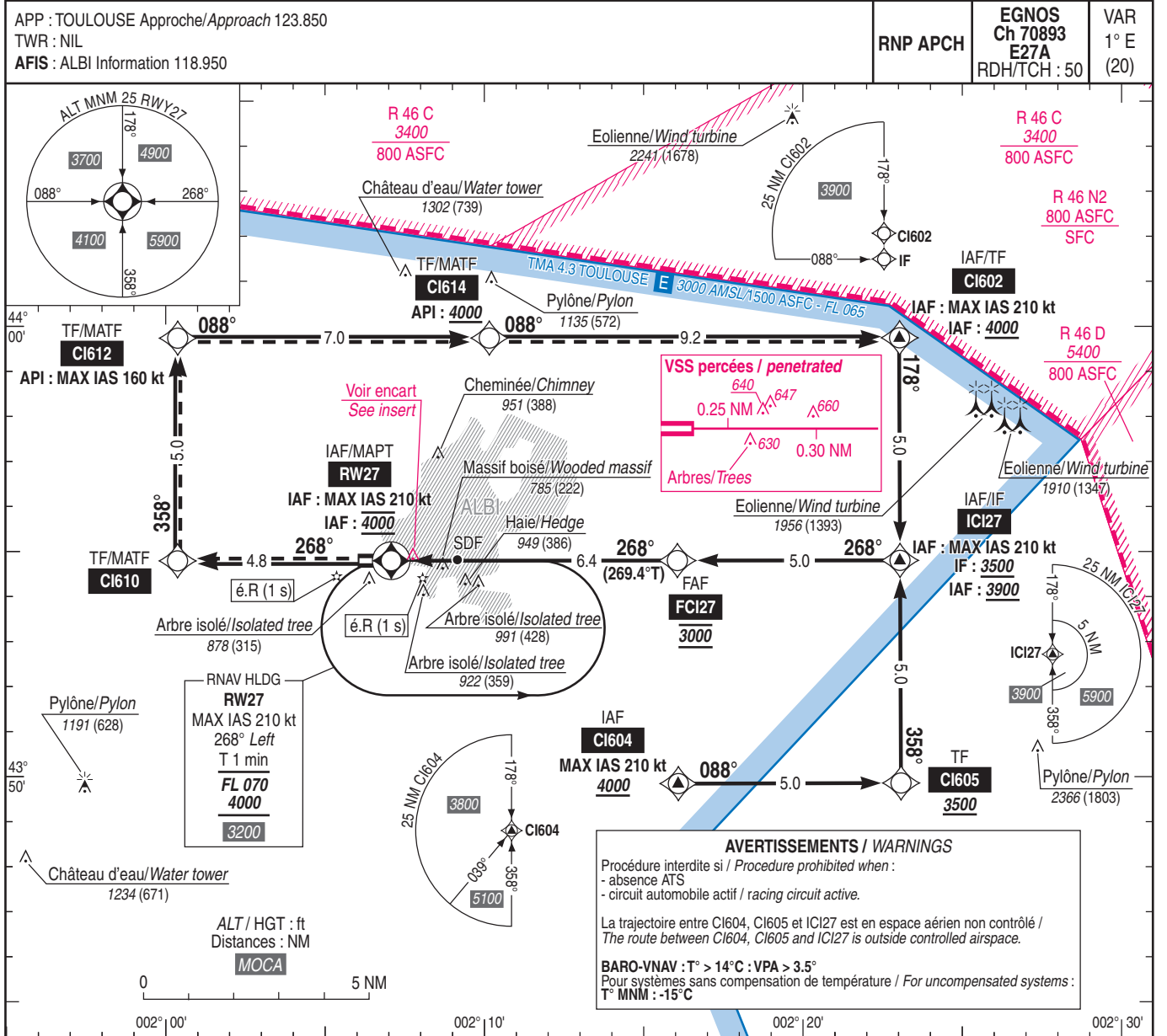
ALBI LE SEQUESTRE

Instrument approach

CAT A B C

ALT AD : 565, DTHR : 563 (21 hPa)

RNP RWY 27



DTHR ← (NM)

MNM AD : distances verticales en pieds, RVR et VIS en mètres / vertical distances in feet, RVR and VIS in metres. REF HGT : ALT DTHR

CAT	LPV			LNAV-VNAV			LNAV			MVL / Circling		DIST RW27
	DA (H)	RVR	OCH	DA (H)	RVR	OCH	MDA (H)	RVR	OCH	MDA (H)	VIS	
A	930 (360)		358	1080 (510)	1500	510	1500			1430 (870)	1500	NM 6 5 4 3 2 ALT 2840 2470 2100 1730 1360 (HGT) (2277) (1907) (1537) (1167) (797)
B	940 (380)	1500	373	1090 (530)	1500	524	1210 (650)	1500	645	1460 (890)	1600	
C	950 (390)		383	1100 (540)	2400	533	2400			1660 (1090)	2400	

Observations/Remarks : Panne de guidage GNSS lors de l'approche / Loss of GNSS guidance during approach : voir/see AIP ENR 1.5

FAF - RW27	6.4 NM	70 kt 5 min 30	85 kt 4 min 32	100 kt 3 min 51	115 kt 3 min 21	130 kt 2 min 58	145 kt 2 min 39	160 kt 2 min 24
VSP (ft/min)		430	525	615	710	805	895	990