

APPROCHE AUX INSTRUMENTS

ALBI LE SEQUESTRE

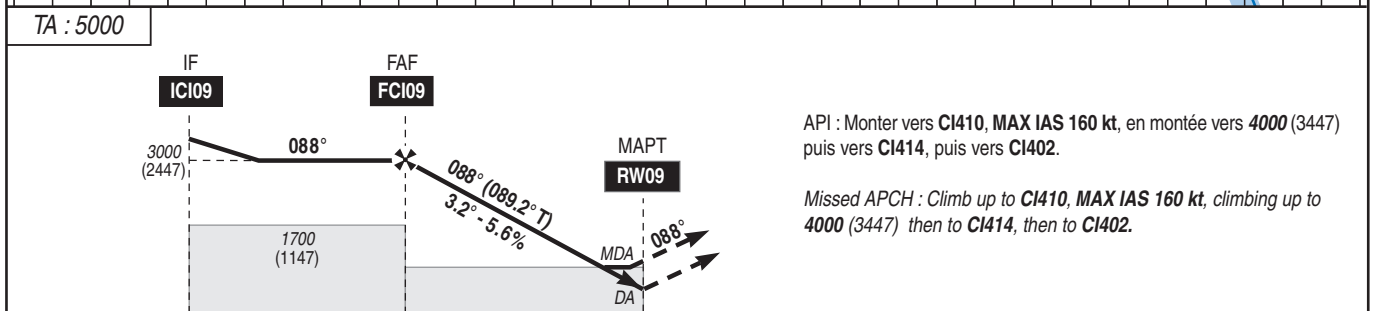
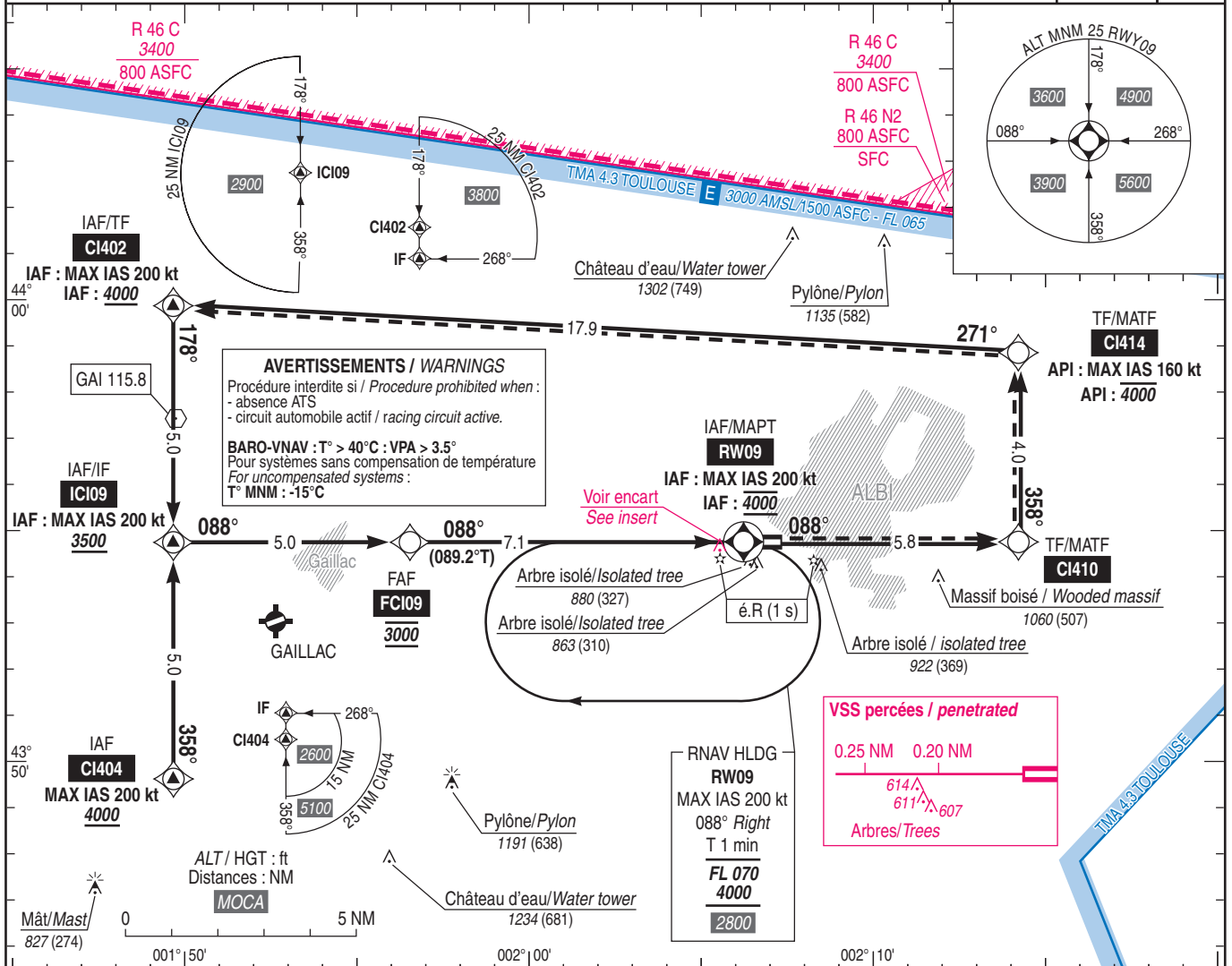
Instrument approach

CAT A B C

ALT AD : 565, DTHR : 553 (20 hPa)

RNP RWY 09

APP : TOULOUSE Approch/Approach 123.850 TWR : NIL AFIS : ALBI Information 118.950	RNP APCH	EGNOS Ch 62585 E09A RDH : 49	VAR 1° E (20)
---	----------	---------------------------------------	---------------------



API : Monter vers CI410, MAX IAS 160 kt, en montée vers 4000 (3447) puis vers CI414, puis vers CI402.
Missed APCH : Climb up to CI410, MAX IAS 160 kt, climbing up to 4000 (3447) then to CI414, then to CI402.

DTHR → (NM) 12.1 7.1 0
MNM AD : distances verticales en pieds, RVR et VIS en mètres / vertical distances in feet, RVR and VIS in metres. REF HGT : ALT DTHR

CAT	LPV			LNAV-VNAV			LNAV			MVL / Circling		DIST RW09						
	DA (H)	RVR	OCH	DA (H)	RVR	OCH	MDA (H)	RVR	OCH	MDA (H)	VIS	NM	7	6	5	4	3	2
A	840 (290)		282	930 (380)	1500	378	1130 (580)	1500	573	1430 (880)	1500	ALT (HGT)	2980 (2427)	2640 (2087)	2300 (1747)	1960 (1407)	1620 (1067)	1280 (727)
B	850 (300)	1400	294	950 (390)	1500	390		1500		1460 (900)	1600							
C	860 (310)		302	960 (410)	1900	404		2400		1630 (1070)	2400							

Observations/Remarks : Panne de guidage GNSS lors de l'approche / Loss of GNSS guidance during approach : voir/see AIP ENR 1.5

FAF - RW09	7.1 NM	70 kt 6 min 03	85 kt 4 min 59	100 kt 4 min 14	115 kt 3 min 41	130 kt 3 min 15	145 kt 2 min 55	160 kt 2 min 39
VSP (ft/min)		395	480	565	650	735	820	905