

APPROCHE AUX INSTRUMENTS

Instrument approach

CAT A B C D

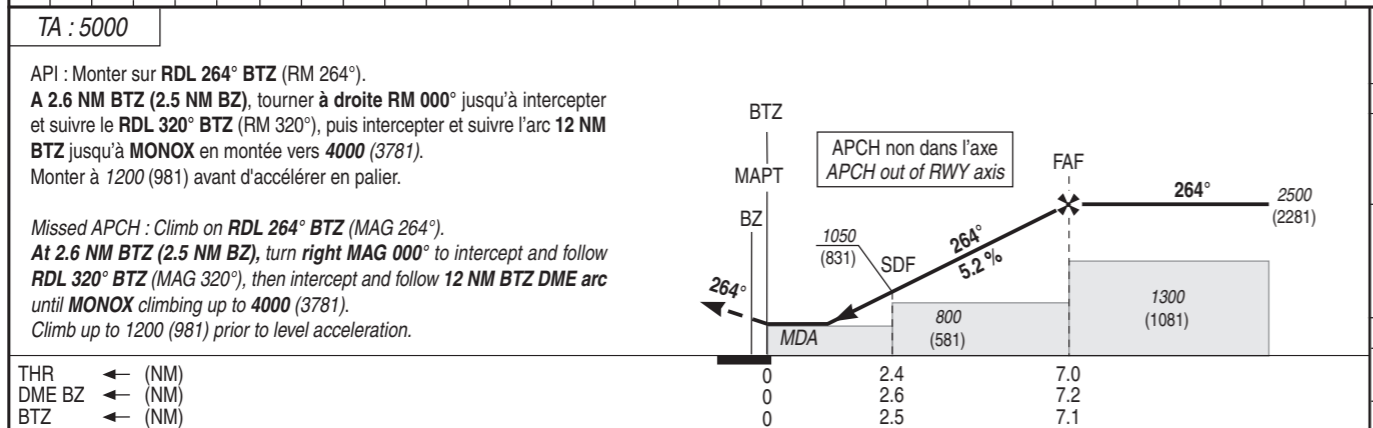
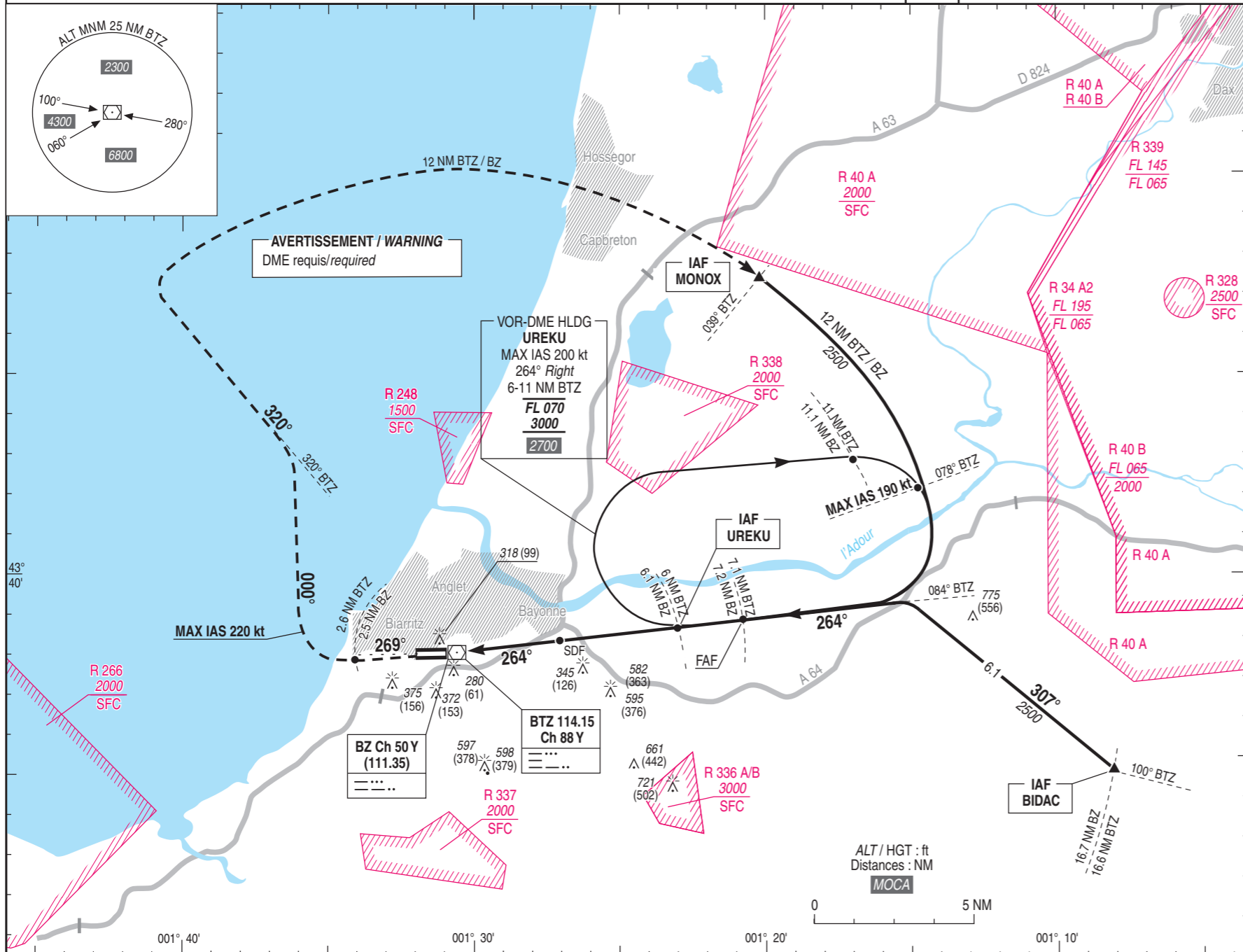
ALT AD : 245, THR : 219 (8 hPa)

BIARRITZ PAYS BASQUE

VOR RWY 27

ATIS : BIARRITZ : 128.230
APP : BIARRITZ Approche / Approach 125.600
TWR : BIARRITZ Tour / Tower 118.700

VAR
0°
(2020)



MNM AD : distances verticales en pieds, RVR et VIS en mètres / vertical distances in feet, RVR and VIS in metres. REF HGT : ALT THR

CAT	VOR			MVL / Circling ⁽¹⁾		DME BTZ						DME BZ						
	MDA (H)	RVR	OCH	MDA (H)	VIS	NM	1	2	3	4	5	6	NM	2	3	4	5	6
A	570 (350)	1500		720 (500)	1500	ALT	580	890	1210	1520	1840	2150	ALT	860	1170	1490	1800	2120
B	600 (380)	1500	345	900 (680)	1600	(HGT)	(361)	(671)	(991)	(1301)	(1621)	(1931)	(HGT)	(641)	(951)	(1271)	(1581)	(1901)
C	630 (410)	1900		1000 (780)	2400													
D	650 (430)	2000		1070 (850)	3600													

Observations/Remarks : (1) MVL interdites au Nord de la piste. Circuit AD RWY 09 : Droite / Circling prohibited North of RWY. Aerodrome circuit RWY 09 : right hand.

FAP - THR	7 NM	70 kt	80 kt	90 kt	100 kt	115 kt	130 kt	145 kt	160 kt	175 kt	185 kt
VSP (ft/min)		6 min 00	5 min 15	4 min 40	4 min 12	3 min 39	3 min 14	2 min 54	2 min 38	2 min 24	2 min 16
		370	420	475	525	605	685	765	840	920	975