

APPROCHE AUX INSTRUMENTS

Instrument approach

CAT A B C D

ALT AD : 245, THR : 219 (8 hPa)

BIARRITZ PAYS BASQUE

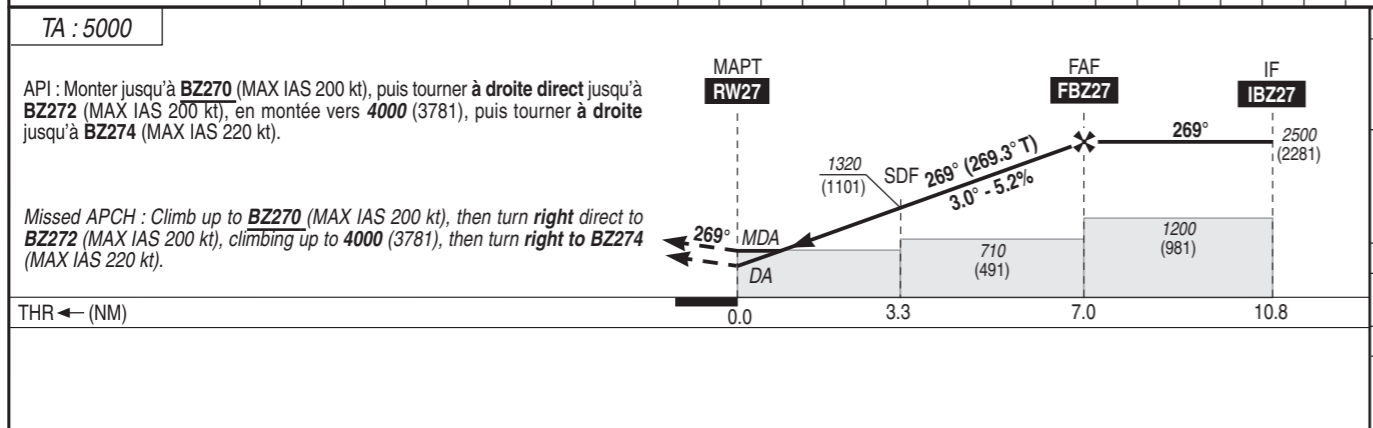
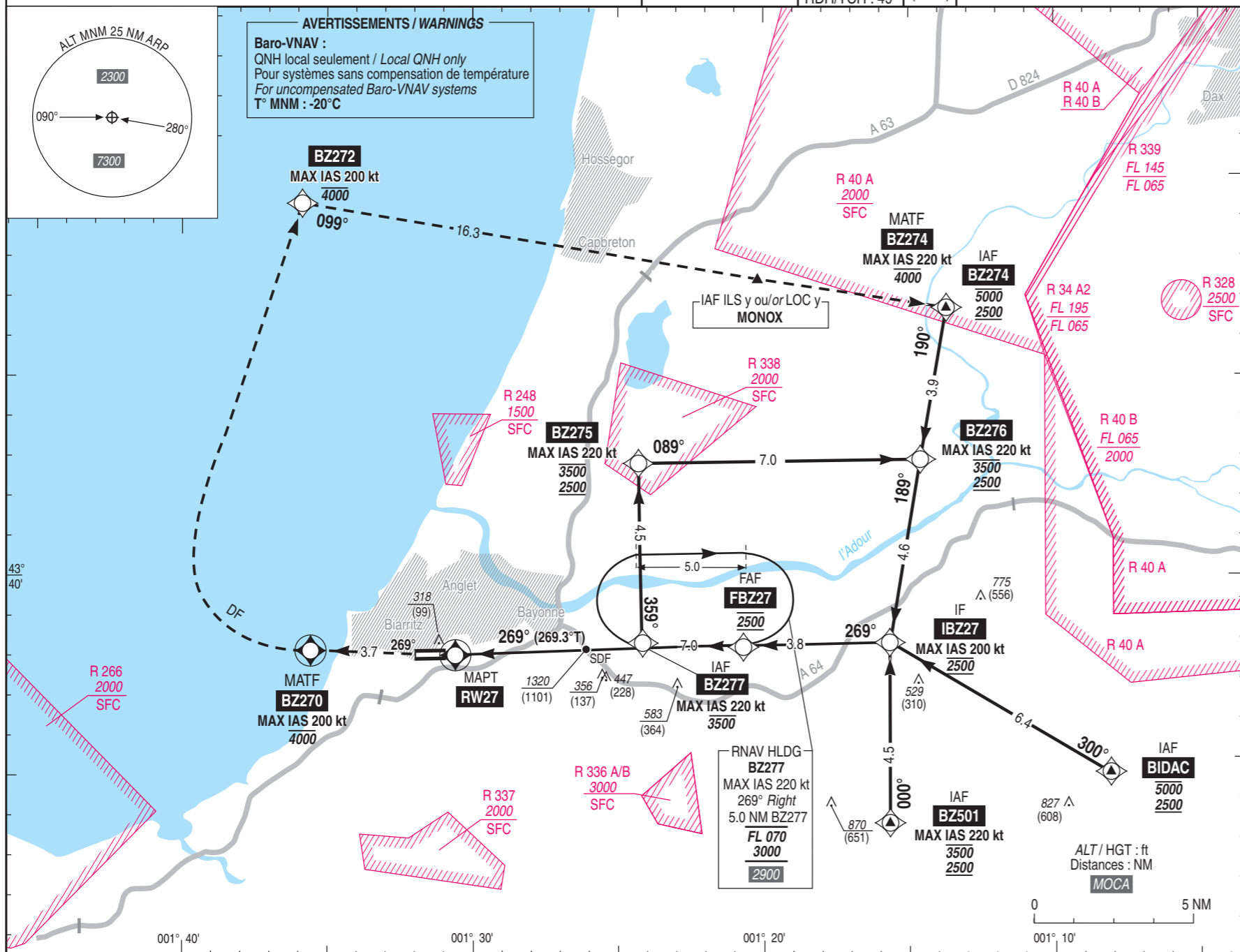
RNP RWY 27

ATIS : BIARRITZ : 128.230
APP : BIARRITZ Approche / Approach 125.600
TWR : BIARRITZ Tour / Tower 118.700

RNP APCH
Fonction attendue requise /
Holding function required

EGNOS
Ch 52742
E27A
RDH/TCH : 49

VAR
0°
(2020)



MNM AD : distances verticales en pieds, RVR et VIS en mètres / vertical distances in feet, RVR and VIS in metres. REF HGT : ALT THR

CAT	LPV			LNAV-VNAV			LNAV			MVL / Circling ⁽¹⁾		DIST RW27
	DA (H)	RVR	OCH	DA (H)	RVR	OCH	MDA (H)	RVR	OCH	MDA (H)	VIS	
A	420 (200)	156	156	470 (250)	230	230	580 (360)	1500	355	720 (500)	1500	NM ALT
B	420 (200)	1200	169	470 (250)	1300	240	580 (360)	1500	355	900 (680)	1600	590
C	420 (200)	1200	185	470 (250)	250	250	580 (360)	1600	355	1000 (780)	2400	910
D	430 (210)	1200	202	480 (260)	260	260	580 (360)	1600	355	1070 (850)	3600	1220

Observations/Remarks : (1) MVL interdites au Nord de la piste. Circuit AD RWY 09 : Droite. / Circling prohibited North of RWY. Aerodrome circuit RWY 09 : right hand.

FAF - THR	VSP (ft/min)	70 kt	80 kt	85 kt	90 kt	95 kt	115 kt	145 kt	160 kt	185 kt
7.01 NM	370	6 min 01	5 min 15	4 min 57	4 min 40	4 min 26	3 min 39	2 min 54	2 min 38	2 min 16