

APPROCHE AUX INSTRUMENTS

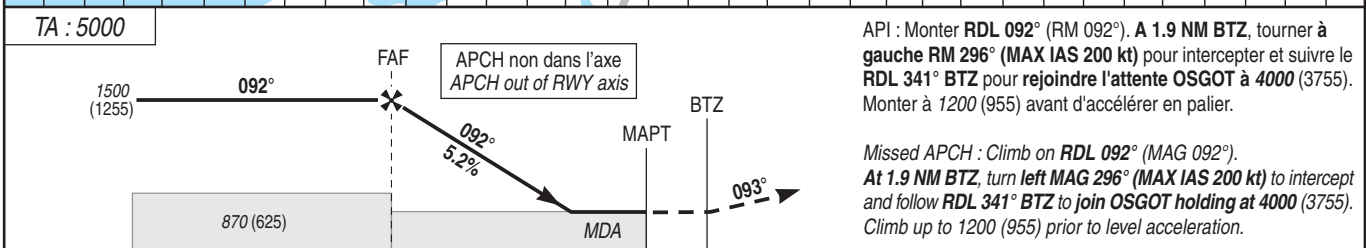
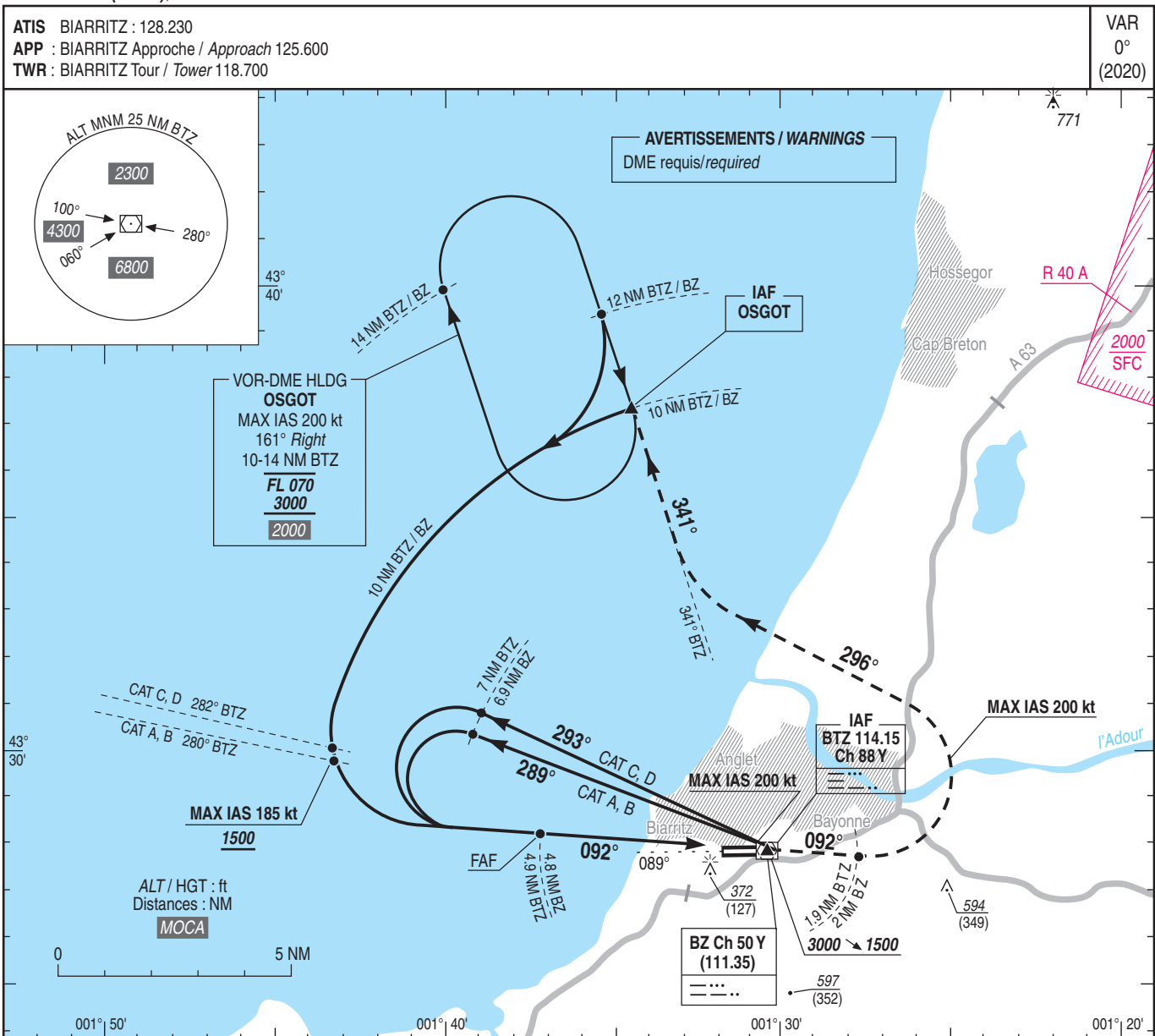
BIARRITZ PAYS BASQUE

Instrument approach

CAT A B C D

ALT AD : 245 (9 hPa), DTHR : 242

VOR RWY 09



→ DTHR (NM)	3.8	0	2
→ DME BZ (NM)	4.8	1	0
→ DME BTZ (NM)	4.9	1.1	1.9

MNM AD : distances verticales en pieds, RVR et VIS en mètres / vertical distances in feet, RVR and VIS in metres. REF HGT : ALT AD

CAT	VOR			MVL / Circling ⁽¹⁾		DME BTZ			DME BZ		
	MDA (H)	RVR	OCH	MDA (H)	VIS	NM	4	3	NM	4	3
A	630 (380)	1300	377	720 (470)	1500	NM	4	3	NM	4	3
B				900 (650)	1600	ALT	1220	910	ALT	1260	950
C				1000 (750)	2400	(HGT)	(975)	(665)	(HGT)	(1015)	(705)
D				1070 (820)	3600						

Observations/Remarks : (1) MVL interdites au Nord de la piste / Circling prohibited North of RWY.

FAF - DTHR	3.8 NM	70 kt	80 kt	90 kt	100 kt	115 kt	130 kt	145 kt	160 kt	175 kt	185 kt
		3 min 15	2 min 51	2 min 32	2 min 16	1 min 59	1 min 45	1 min 34	1 min 25	1 min 18	1 min 14
VSP (ft/min)		370	420	475	530	610	690	770	850	930	980