

APPROCHE AUX INSTRUMENTS

BIARRITZ PAYS BASQUE

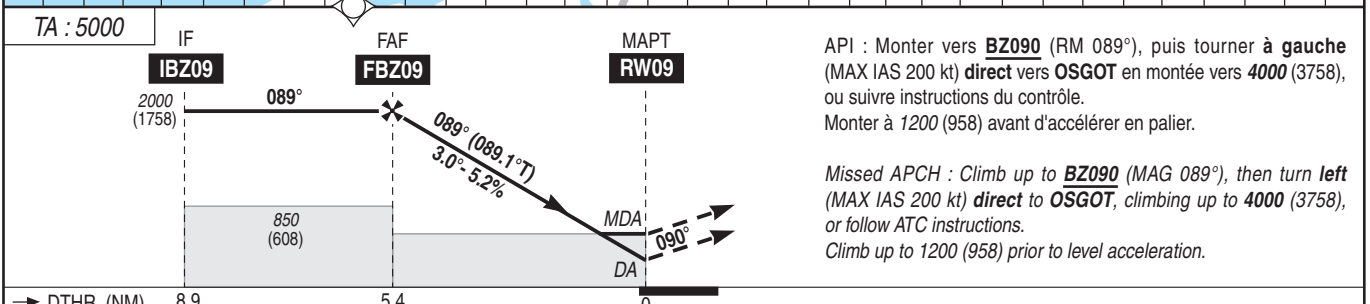
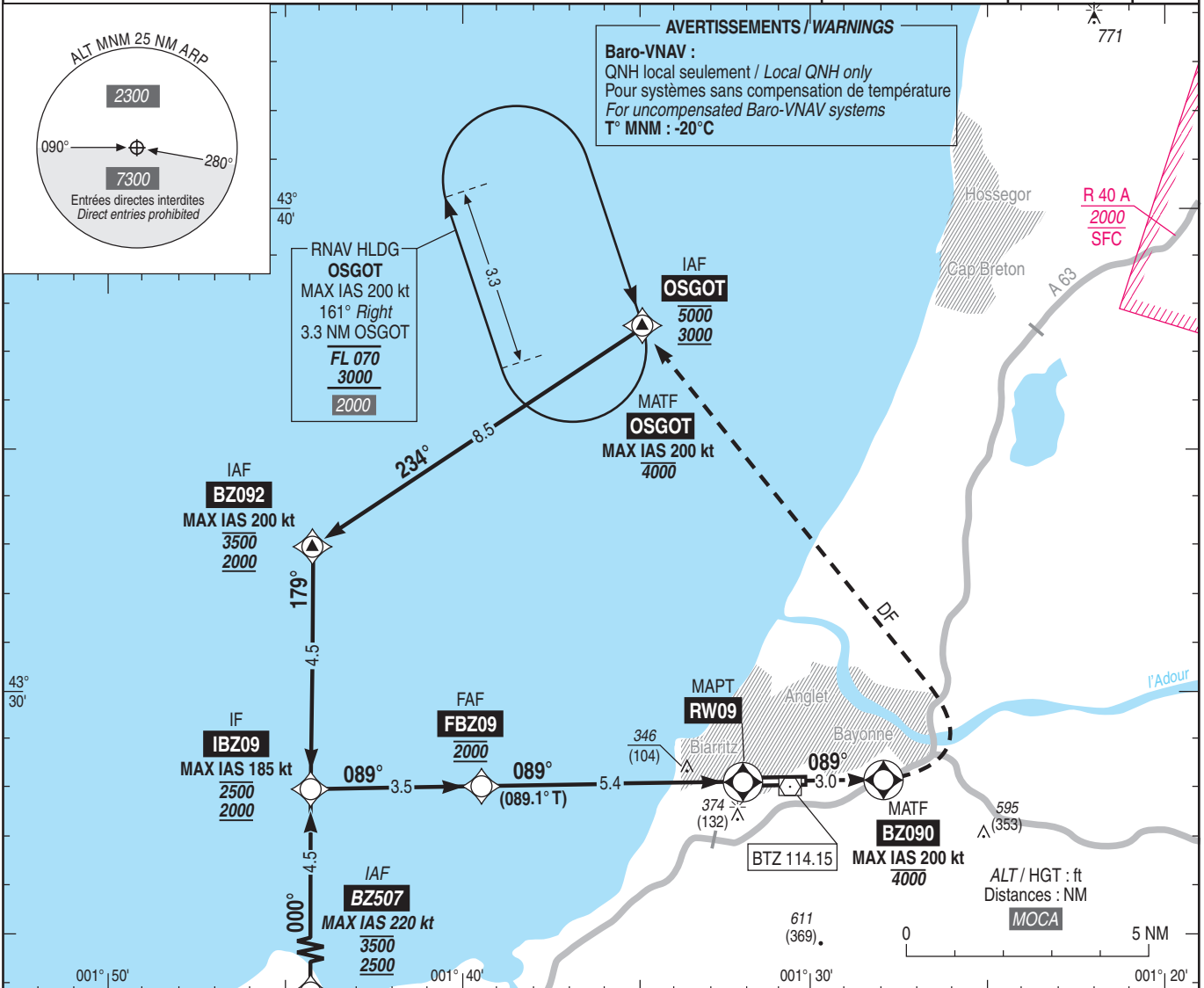
Instrument approach

CAT A B C D

ALT AD : 245, DTHR : 242 (9 hPa)

RNP RWY 09

ATIS BIARRITZ : 128.230 APP : BIARRITZ Approche / Approach 125.600 TWR : BIARRITZ Tour / Tower 118.700	RNP APCH Fonction attente requise / Holding function required	EGNOS Ch 81671 E09A RDH/TCH : 49	VAR 0° (2020)
---	--	---	----------------------------



→ DTHR (NM) 8.9 5.4 0 REF HGT : ALT DTHR

MNM AD : distances verticales en pieds, RVR et VIS en mètres / vertical distances in feet, RVR and VIS in metres.

CAT	LPV			LNAV-VNAV			LNAV			MVL / Circling (1)		DIST RW09
	DA (H)	RVR	OCH	DA (H)	RVR	OCH	MDA (H)	RVR	OCH	MDA (H)	VIS	
A			181	500 (250)	800	236				720 (470)	1500	5
B			191	500 (250)	800	246				900 (650)	1600	4
C	500 (250)	800	200	500 (260)	800	255	600 (360)	1200	351	1000 (750)	2400	3
D			210	510 (270)	900	265				1070 (820)	3600	2
												1
												ALT
												(HGT)
												1880
												1560
												1240
												930
												610

Observations / Remarks : (1) MVL interdites au Nord de la piste / Circling prohibited North of RWY.

FAF - RW09	5.4 NM	70 kt	85 kt	100 kt	115 kt	130 kt	160 kt	185 kt
		4 min 38	3 min 49	3 min 15	2 min 49	2 min 30	2 min 02	1 min 45
VSP (ft/min)		370	450	530	610	690	850	980