

APPROCHE AUX INSTRUMENTS

PAU PYRENEES

Instrument approach

FNA ILS CAT I ou/ou CAT II et /and CAT III RWY 31

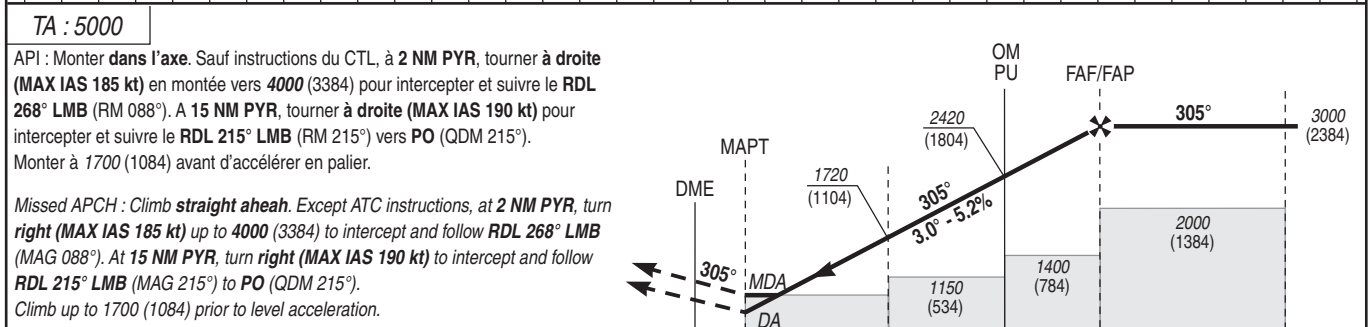
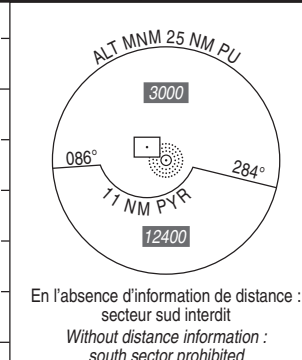
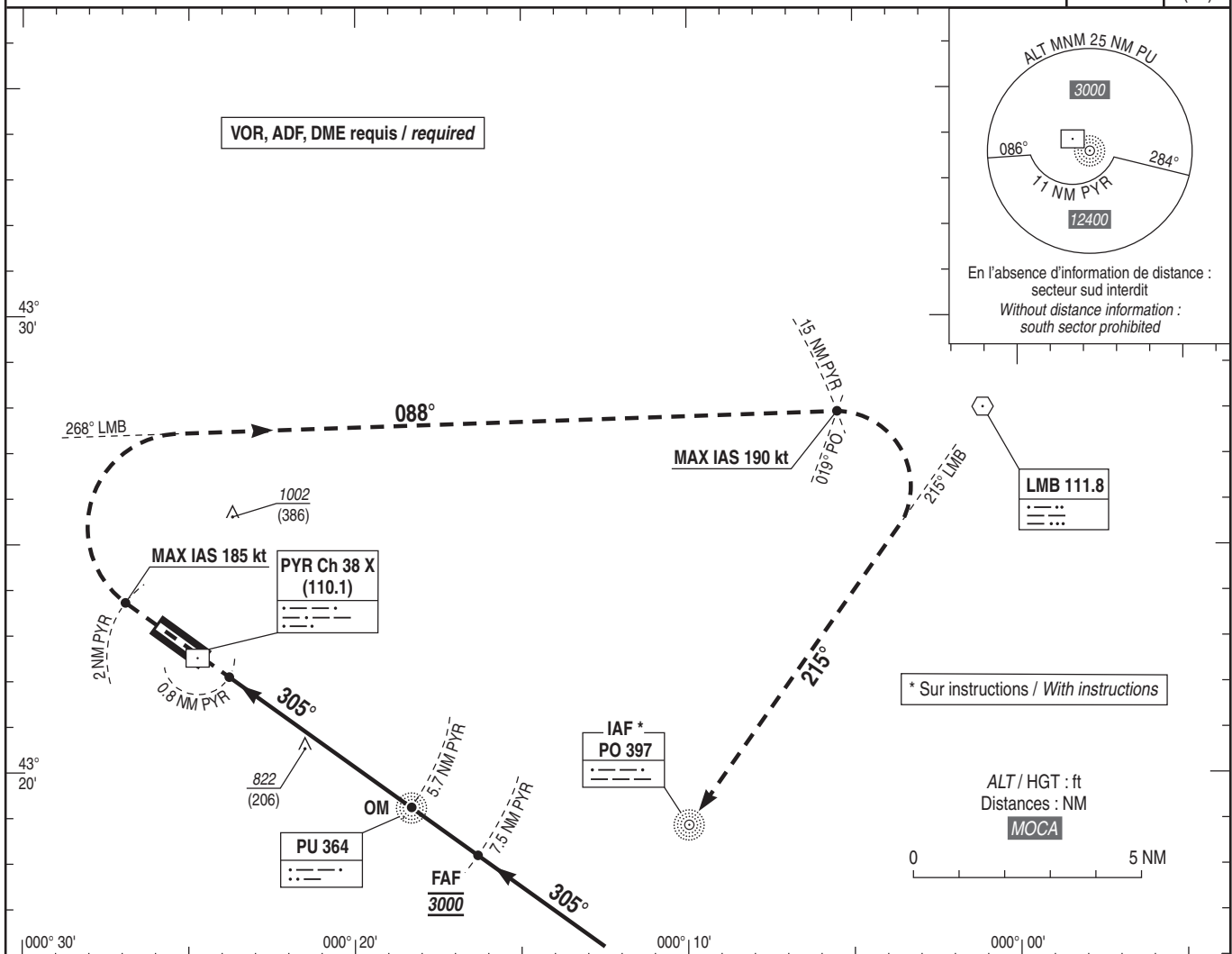
CAT A B C D

FNA LOC RWY 31

ALT AD : 616, THR : 616 (22 hPa)

ATIS : PAU 128.480
APP : PYRENEES Approche / Approach 128.800 - 121.175 (s)
TWR : PAU Tour / Tower 124.150

ILS-DME PYR 110.1 RDH : 52	VAR 0° (20)
--	--------------------------



DME PYR ← (NM)
THR ← (NM)

MNM AD : distances verticales en pieds, RVR et VIS en mètres / vertical distances in feet, RVR and VIS in metres. REF HGT : ALT THR

CAT	ILS		OCH ILS CAT I	OCH ILS CAT II	LOC			MVL / Circling ⁽¹⁾		DIST PYR NM ALT (HGT)
	DA (H)	RVR			MDA (H)	RVR	OCH	MDA (H)	VIS	
A	820 (200)		172	52				1330 (720)	1500	7 2830 (2214)
B	820 (200)		182	60	1070 (460)	1400	452	1330 (720)	1600	6 2510 (1894)
C	820 (200)	550	192	73				1550 (930)	2400	5 2200 (1584)
D	830 (210)		201	86				1560 (940)	3600	4 1880 (1264)
										3 1560 (944)
										2 1250 (634)

Observations / Remarks : (1) MVL interdites au Sud de la piste / Circling prohibited South of RWY.

FAF - THR	7.3 NM	70 kt	80 kt	90 kt	100 kt	110 kt	120 kt	130 kt	145 kt	160 kt	175 kt	185 kt
VSP (ft/min)		6 min 15	5 min 29	4 min 52	4 min 23	3 min 59	3 min 39	3 min 22	3 min 01	2 min 44	2 min 30	2 min 22
		370	420	470	530	580	630	680	760	840	920	970