

**APPROCHE AUX INSTRUMENTS**

**PAU PYRENEES**

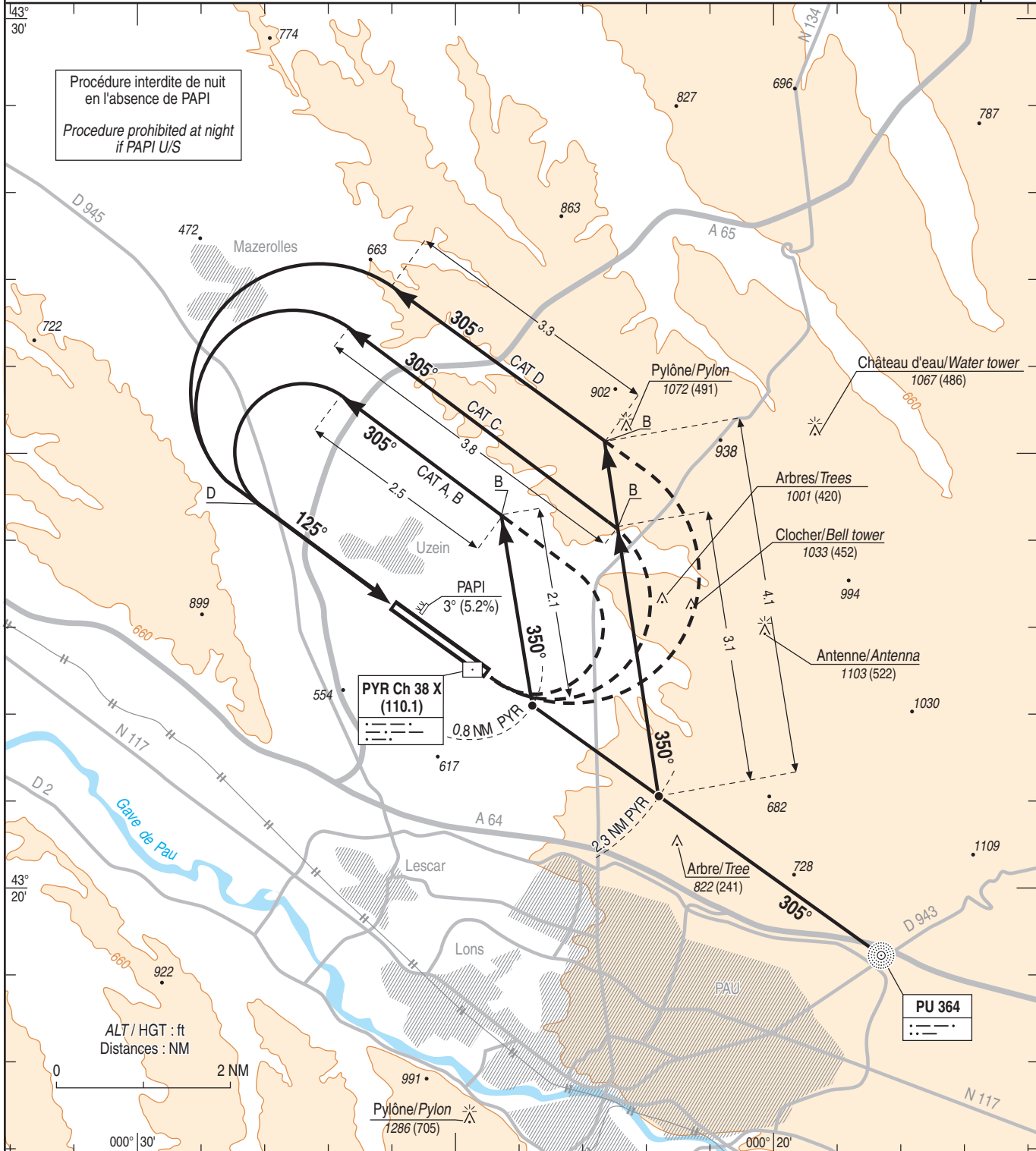
Instrument approach

CAT A B C D

ALT AD : 616, THR : 581 (21 hPa)

VPT B RWY 13

|  |                   |
|--|-------------------|
| ATIS : PAU 128.480                                       | VAR<br>0°<br>(20) |
| APP : PYRENEES Approche / Approach 128.800 - 121.175 (s) |                   |
| TWR : PAU Tour / Tower 124.150                           |                   |



| CAT | VPT B      |      |
|-----|------------|------|
|     | MDA (H)    | VIS  |
| A   | 1300 (720) | 1500 |
| B   | 1300 (720) | 1600 |
| C   | 1470 (890) | 2400 |
| D   | 1500 (920) | 3600 |

Observations / Remarks : NIL.