

APPROCHE AUX INSTRUMENTS

TOULOUSE BLAGNAC

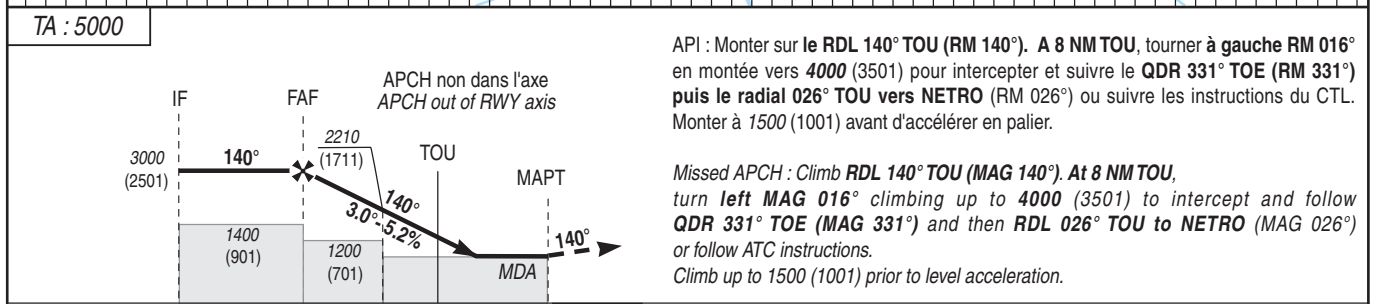
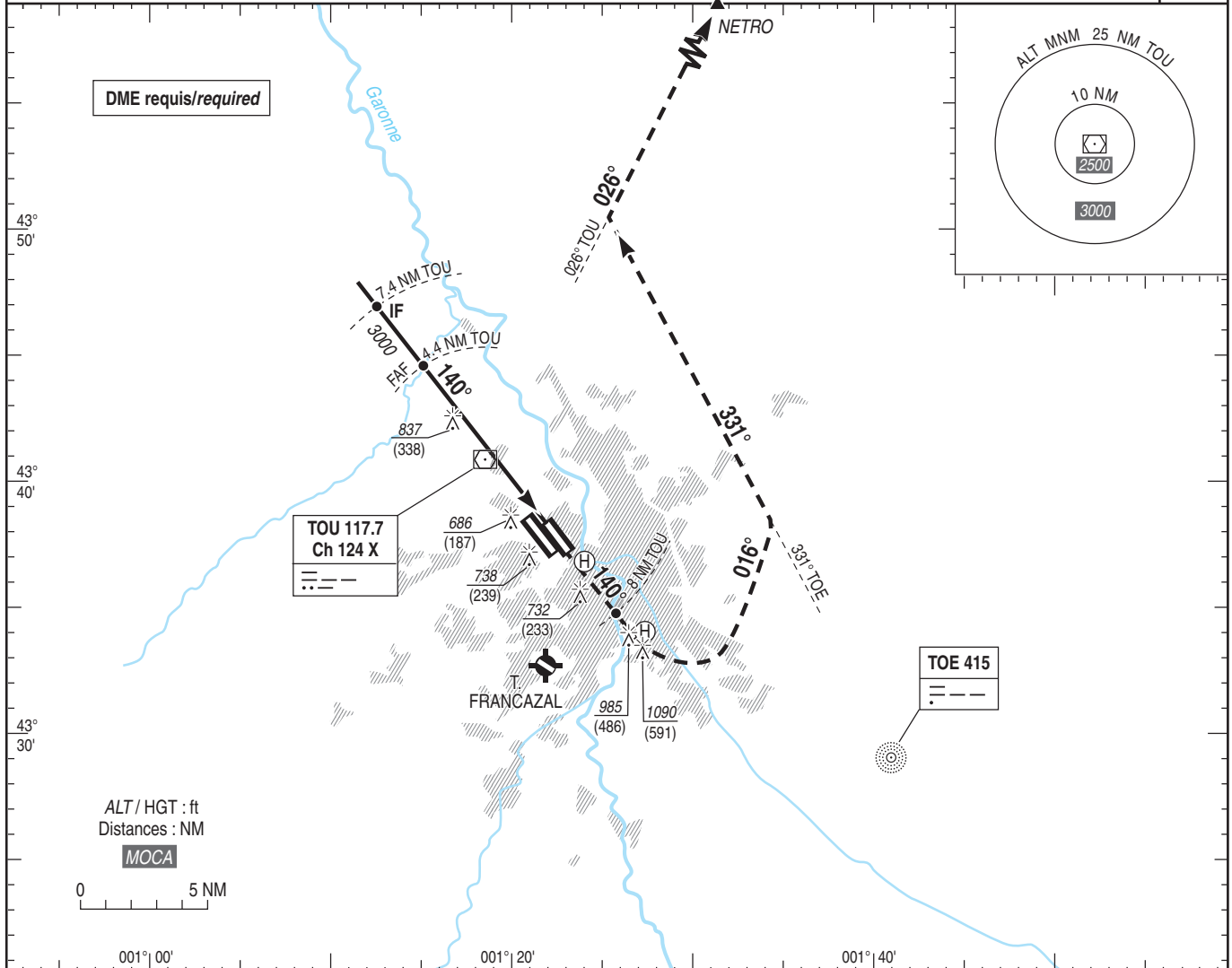
Instrument approach

CAT A B C D

ALT AD : 499 (18 hPa), THR : 489

FNA VOR RWY 14L

<p>ATIS BLAGNAC : 123.130 APP : TOULOUSE Approche / Approach 129.305 (1) - 125.180 (2) - 124.975 (5) BLAGNAC Approche / Approach 121.105 TWR : BLAGNAC Tour / Tower 118.100</p>	<p>(1) Secteur Est / East sector (2) Secteur Ouest / West sector</p> <p>VAR 1°E (20)</p>
--	---



→ THR (NM)	10.7	7.7	5.2	3.3	0.3
→ TOU (NM)	7.4	4.4	1.9	0	3

MNM AD : distances verticales en pieds, RVR et VIS en mètres / vertical distances in feet, RVR and VIS in metres. REF HGT : ALT AD

CAT	VOR			MVL / Circling ⁽¹⁾		DME TOU	4	3	2	1	0	1
	MDA (H)	RVR	OCH	MDA (H)	VIS							
A				1030 (530)	1500	NM	4	3	2	1	0	1
B				1050 (550)	1600	ALT	2880	2570	2250	1930	1610	1290
C	950 (450)	1400	450	1320 (820)	2400	(HGT)	(2381)	(2071)	(1751)	(1431)	(1111)	(791)
D				1320 (820)	3600							

Observations/Remarks : (1) MVL interdites au Nord-Est de la piste / Circling prohibited North-East of RWY.

TOU - MAPT	3.0 NM	70 kt 2 min 34	85 kt 2 min 07	100 kt 1 min 48	115 kt 1 min 34	130 kt 1 min 23	160 kt 1 min 08	185 kt 0 min 58
VSP (ft/min)		Non disponible / Not available						