

**APPROCHE AUX INSTRUMENTS**

**COGNAC CHATEAUBERNARD**

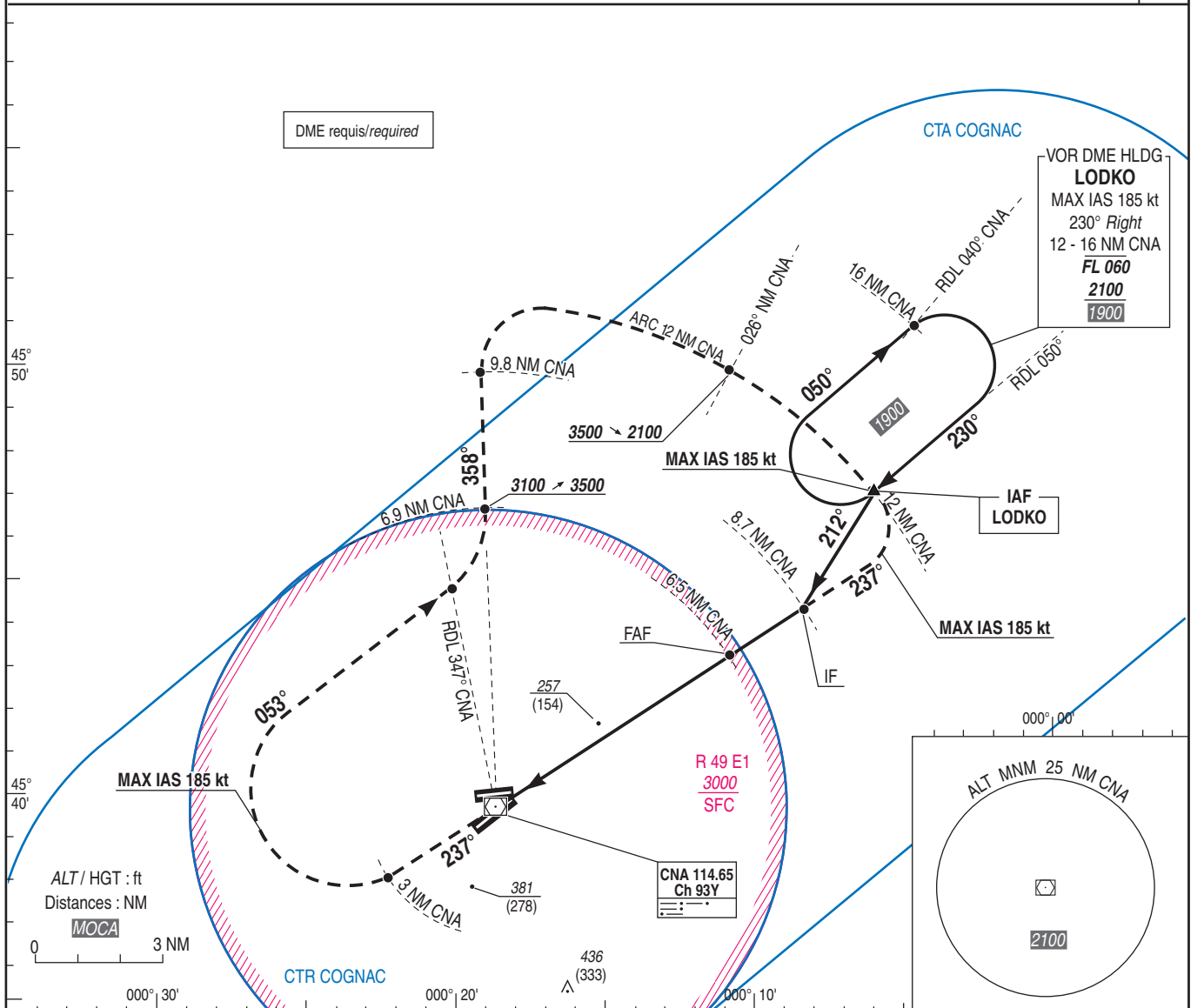
Instrument approach

CAT. A B C

ALT AD : 103 (4 hPa), DTHR : 100

VOR Z RWY23

APP : COGNAC approche / Approach 132.450 142.450 (1) 387.000 (1)	VAR
TWR : COGNAC Tour / Tower 120.075 122.100 132.450 (1) 253.200 (1)	0°E
(1) MIL / reserved MIL ACFT	(20)



TA : 5000

API : Monter RDL 237° CNA vers 3100 (2997).  
 A 3 CNA tourner à droite RM 053° pour intercepter et suivre RDL 358° CNA.  
 A 6.9 CNA monter à 3500 (3397) puis rejoindre arc 12 CNA.  
 Climb RDL 237° CNA to 3100 (2997).  
 At 3 CNA turn right MAG track 053° to intercept and follow RDL 358° CNA.  
 At 6.9 CNA climb to 3500 (3397) then join arc 12 CNA.

APCH non dans l'axe  
APCH out of RWY axis

MAPT 3100  
FAF 3100  
IF 2100 (1997)

MDA (H) 980 (877)

0.7 6.2 8.4  
1 6.5 8.7

DTHR ← (NM) 0.7  
 DME CNA ← (NM) 1

MNM AD : distances verticales en pieds, RVR et VIS en mètres / Vertical distances in feet, RVR and VIS in meters. REF HGT : ALT AD

CAT	VOR DME (1)			MVL (2)		DME CNA					
	MDA (H)	RVR	OCH	MDA (H)	VIS	NM	6	5	4	3	2
A	510 (400)	1500		680 (580)	1500	ALT	1940	1620	1310	990	670
B	510 (400)	1500	400	680 (580)	1600	(HGT)	(1837)	(1517)	(1207)	(887)	(567)
C	510 (400)	1900		830 (730)	2400						

Observations / Remarks : (1) Minimums CAT C majorés / Minimums CAT C increased.  
 (2) MVL 05/23 au sud et MVL 08/26 sur clairance / Circling 05/23 by the south and 08/26 circling on clearance.

FAF - MAPT	5.5 NM	70 kt	85 kt	100 kt	115 kt	130 kt	160 kt	185 kt
VSP (ft/min)		4 min 43	3 min 53	3 min 18	2 min 52	2 min 32	2 min 04	1 min 47
		370	450	525	605	685	845	975