

APPROCHE AUX INSTRUMENTS

MARTINIQUE AIME CESAIRE

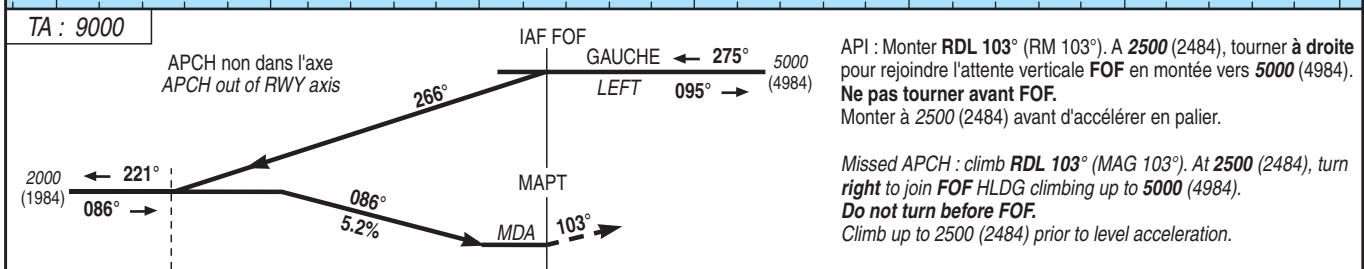
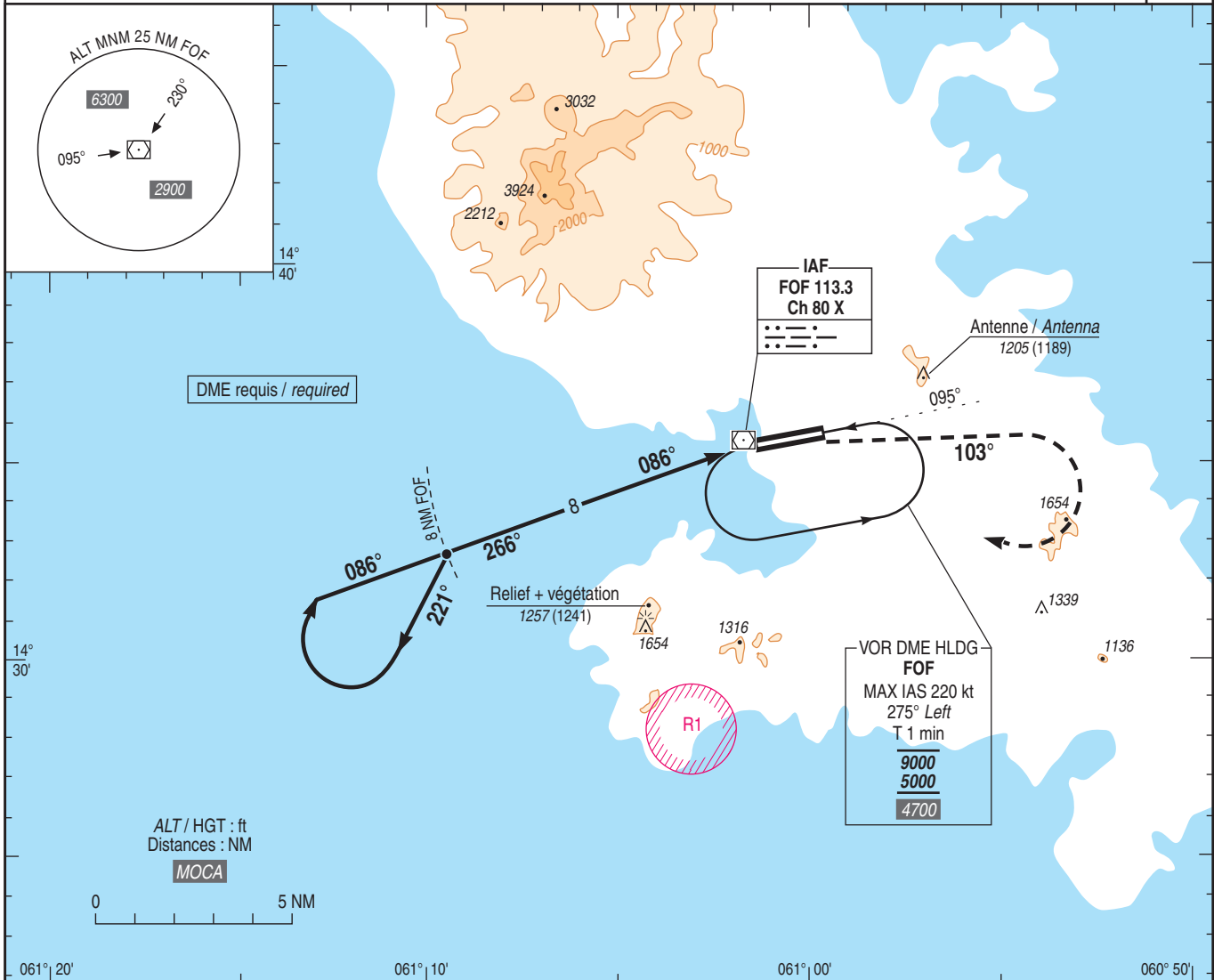
Instrument approach

CAT A B C D

ALT AD : 16 (1 hPa), THR : 10

VOR RWY 10

<p>ATIS : MARTINIQUE 127.850 APP : MARTINIQUE Approche / Approach 121.000 - 129.050 (s) TWR : MARTINIQUE Tour / Tower 118.500</p>	<p>VAR 15° W (20)</p>
---	-------------------------------



MNM AD : distances verticales en pieds, RVR et VIS en mètres / vertical distances in feet, RVR and VIS in metres. REF HGT : ALT AD

CAT	VOR			MVL / Circling (1)	
	MDA (H)	RVR	OCH	MDA (H)	VIS
A	740 (720)	3300	717	810 (800)	3300
B	750 (740)	3400	733	1520 (1510)	3400
C	780 (760)	3500	757	1660 (1650)	3500
D	800 (780)	3600	777	2050 (2040)	3600

Observations / Remarks : (1) MVL interdites au Nord de la piste / Circling prohibited North of RWY.