

APPROCHE AUX INSTRUMENTS

MARTINIQUE AIME CESAIRE

Instrument approach

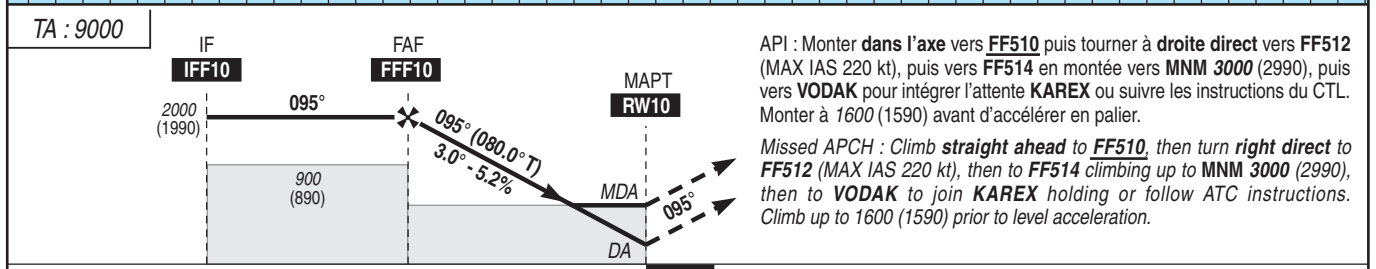
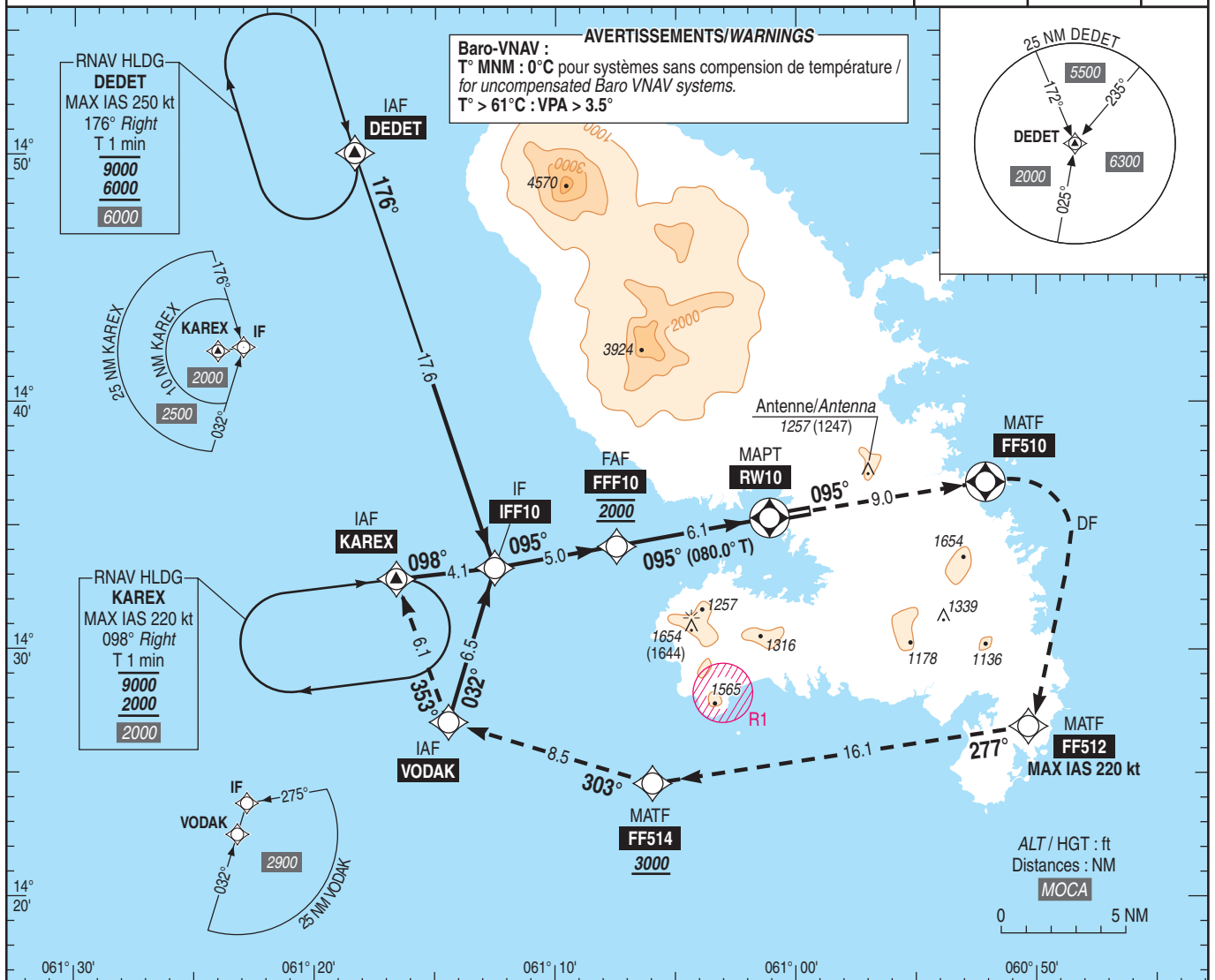
CAT A B C D

ALT AD : 16, THR : 10 (1 hPa)

RNP RWY 10

ATIS : MARTINIQUE 127.850
APP : MARTINIQUE Approche / Approach 121.000 - 129.050 (s)
TWR : MARTINIQUE Tour / Tower 118.500

RNP APCH	RDH / TCH : 52	VAR 15°W (2020)
----------	-------------------	-----------------------



MNM AD : distances verticales en pieds, RVR et VIS en mètres / vertical distances in feet, RVR and VIS in metres. REF HGT : ALT THR

CAT	LNAV-VNAV (1) API 2.5%			LNAV (1) API 2.5%			MVL / Circling (2)		DIST RW10					
	DA (H)	RVR	OCH	MDA (H)	RVR	OCH	MDA (H)	VIS	NM	6	5	4	3	2
A	550 (540)	1500	540	770 (760)	1500	753	810 (800)	1500	6	1970 (1960)	1650 (1640)	1340 (1330)	1020 (1010)	700 (690)
B	570 (560)	1500	553	790 (780)	1500	777	1520 (1510)	1600						
C	590 (580)	2400	572	820 (810)	2400	801	1660 (1650)	2400						
D	610 (600)	2400	599	830 (820)	2400	820	2050 (2040)	3600						

Observations : (1) Pour MNM particuliers, voir / For special MNM, see : AD 2 TFFF IAC RWY10 RNP MINIMA.
(2) MVL interdites au Nord de la piste. MVL interdites de nuit RWY28 si PAPI RWY28 US / Circling prohibited North of runway. Circling prohibited by night RWY28 if PAPI RWY28 US
Panne de guidage GNSS lors de l'approche / Loss of GNSS guidance during approach : voir/see ENR 1.5.

FAF - RW10	6.1 NM	70 kt 5 min 13	85 kt 4 min 18	100 kt 3 min 39	115 kt 3 min 11	130 kt 2 min 49	145 kt 2 min 31	160 kt 2 min 17	185 kt 1 min 58
VSP (ft/min)		370	450	530	610	690	765	845	980