

APPROCHE AUX INSTRUMENTS

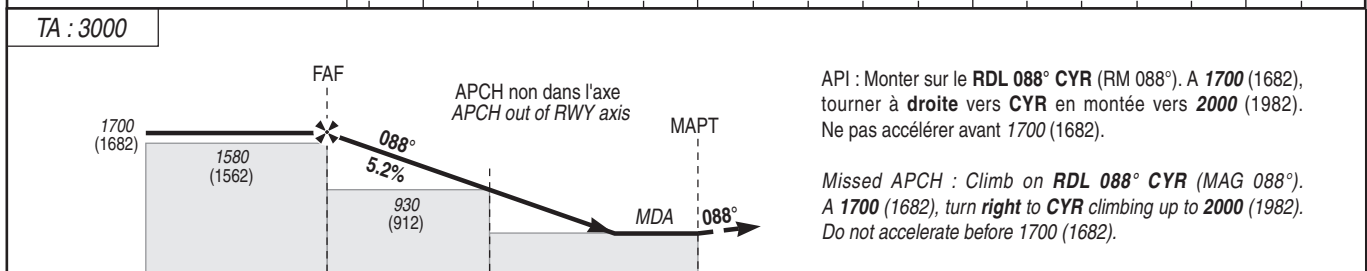
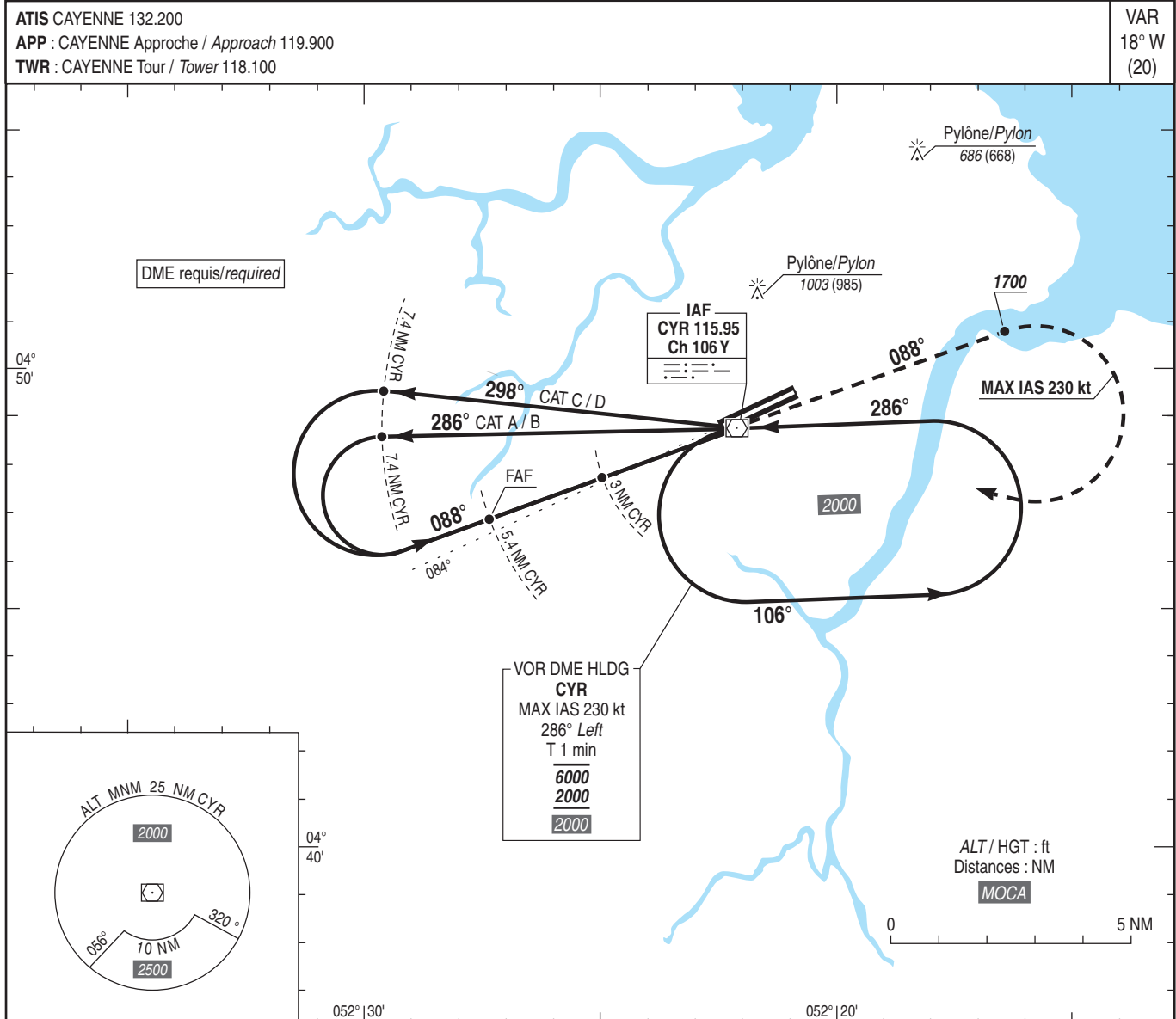
CAYENNE FELIX EBOUE

Instrument approach

CAT A B C D

ALT AD : 26, THR : 18 (1 hPa)

VOR Z RWY 08



→ THR (NM) 5.1 2.7
→ CYR (NM) 5.4 3

MNM AD : distances verticales en pieds, RVR et VIS en mètres / vertical distances in feet, RVR and VIS in metres. REF HGT : ALT THR

| CAT | VOR Z | | | MVL / Circling (1) | | | DME CYR | | | | | |
|-----|-----------|------|-----|--------------------|------|------|---------|--------|--------|-------|-------|-------|
| | MDA (H) | RVR | OCH | MDA (H) | VIS | OCH | NM | 5 | 4 | 3 | 2 | 1 |
| A | | 1500 | | 730 (710) | 1600 | 708 | ALT | 1560 | 1250 | 930 | 620 | 300 |
| B | | 1500 | | 730 (720) | 1600 | 711 | (HGT) | (1542) | (1232) | (912) | (602) | (282) |
| C | 460 (440) | | 439 | 910 (890) | 2400 | 888 | | | | | | |
| D | | 1600 | | 1090 (1080) | 3600 | 1072 | | | | | | |

Observations / Remarks : (1) MVL interdites au Nord de la piste - HJ seulement / Circling prohibited North of RWY - HJ only.

| | | 70 kt | 85 kt | 100 kt | 115 kt | 130 kt | 160 kt | 185 kt |
|--------------|--------|----------|----------|----------|----------|----------|----------|----------|
| FAF - THR | 5.1 NM | 4 min 24 | 3 min 37 | 3 min 05 | 2 min 41 | 2 min 22 | 1 min 55 | 1 min 40 |
| FAF - MAPT | 5.4 NM | 4 min 38 | 3 min 49 | 3 min 14 | 2 min 49 | 2 min 30 | 2 min 02 | 1 min 45 |
| VSP (ft/min) | | 370 | 450 | 530 | 610 | 685 | 845 | 980 |