

**APPROCHE AUX INSTRUMENTS**

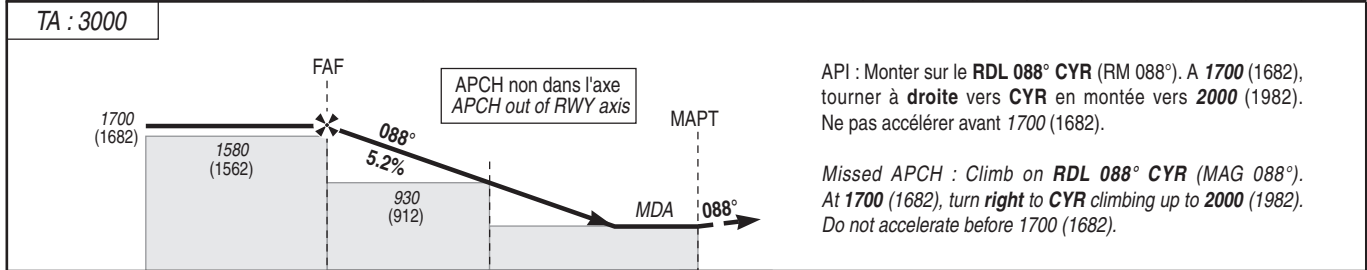
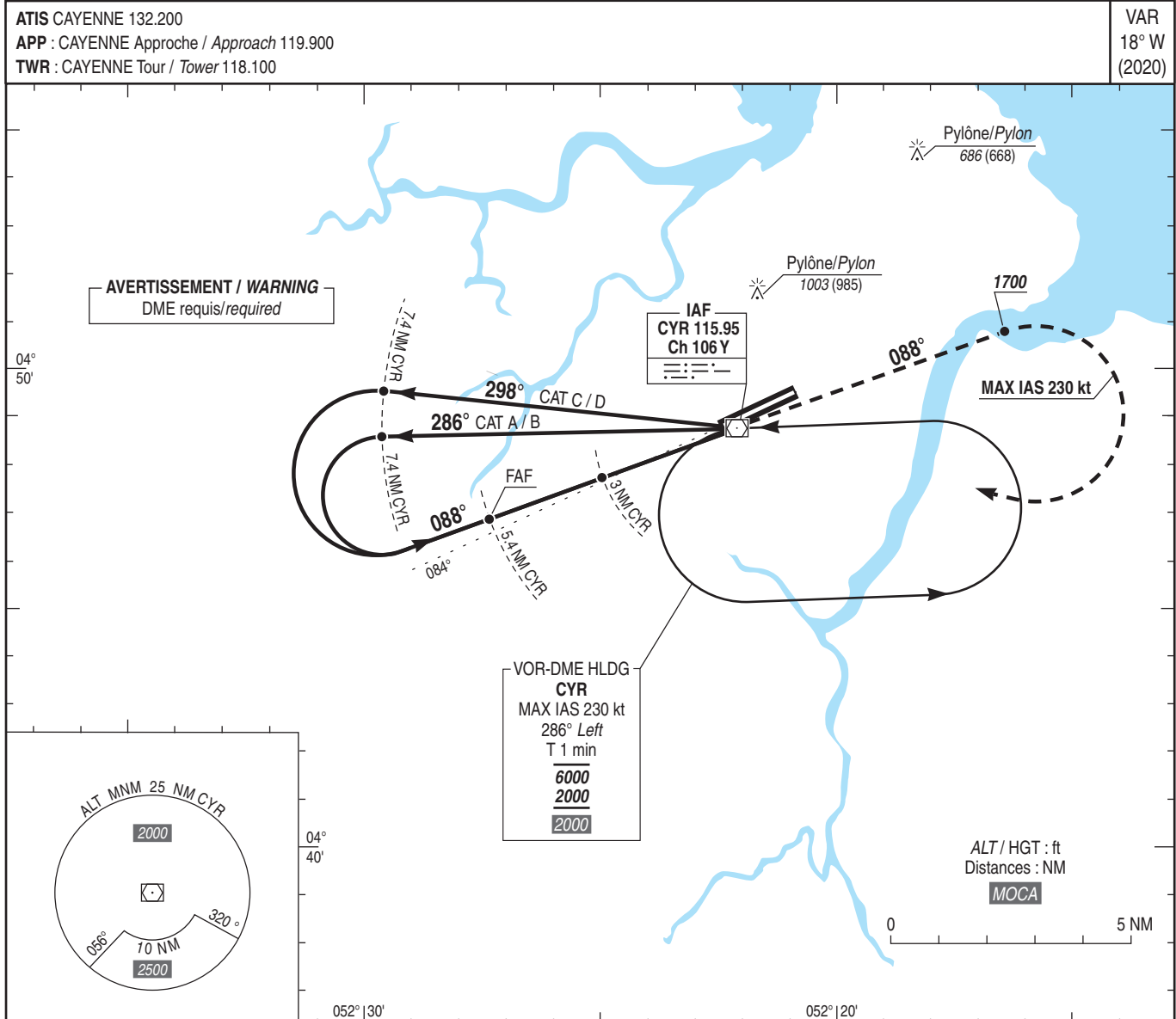
**CAYENNE FELIX EBOUE**

Instrument approach

CAT A B C D

ALT AD : 26, THR : 18 (1 hPa)

VOR RWY 08



API : Monter sur le RDL 088° CYR (RM 088°). A 1700 (1682), tourner à **droite** vers CYR en montée vers 2000 (1982). Ne pas accélérer avant 1700 (1682).  
Missed APCH : Climb on RDL 088° CYR (MAG 088°). At 1700 (1682), turn **right** to CYR climbing up to 2000 (1982). Do not accelerate before 1700 (1682).

| CAT | VOR       |      |     | MVL / Circling (1) |      |      | DME CYR |        |        |       |       |       |  |
|-----|-----------|------|-----|--------------------|------|------|---------|--------|--------|-------|-------|-------|--|
|     | MDA (H)   | RVR  | OCH | MDA (H)            | VIS  | OCH  | NM      | 5      | 4      | 3     | 2     | 1     |  |
| A   | 460 (440) | 1500 | 439 | 730 (710)          | 1600 | 708  | ALT     | 1560   | 1250   | 930   | 620   | 300   |  |
| B   |           | 1500 |     | 730 (720)          | 1600 | 711  | (HGT)   | (1542) | (1232) | (912) | (602) | (282) |  |
| C   |           | 1600 |     | 910 (890)          | 2400 | 888  |         |        |        |       |       |       |  |
| D   |           | 1600 |     | 1090 (1080)        | 3600 | 1072 |         |        |        |       |       |       |  |

Observations / Remarks : (1) MVL interdites au Nord de la piste - HJ seulement / Circling prohibited North of RWY - HJ only.

|              |        | 70 kt    | 85 kt    | 100 kt   | 115 kt   | 130 kt   | 160 kt   | 185 kt   |
|--------------|--------|----------|----------|----------|----------|----------|----------|----------|
| FAF - THR    | 5.1 NM | 4 min 24 | 3 min 37 | 3 min 05 | 2 min 41 | 2 min 22 | 1 min 55 | 1 min 40 |
| FAF - MAPT   | 5.4 NM | 4 min 38 | 3 min 49 | 3 min 14 | 2 min 49 | 2 min 30 | 2 min 02 | 1 min 45 |
| VSP (ft/min) |        | 370      | 450      | 530      | 610      | 685      | 845      | 980      |