

APPROCHE AUX INSTRUMENTS

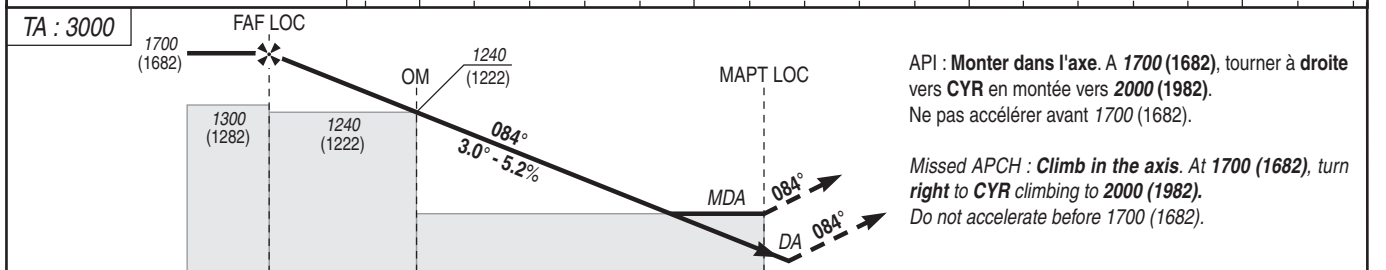
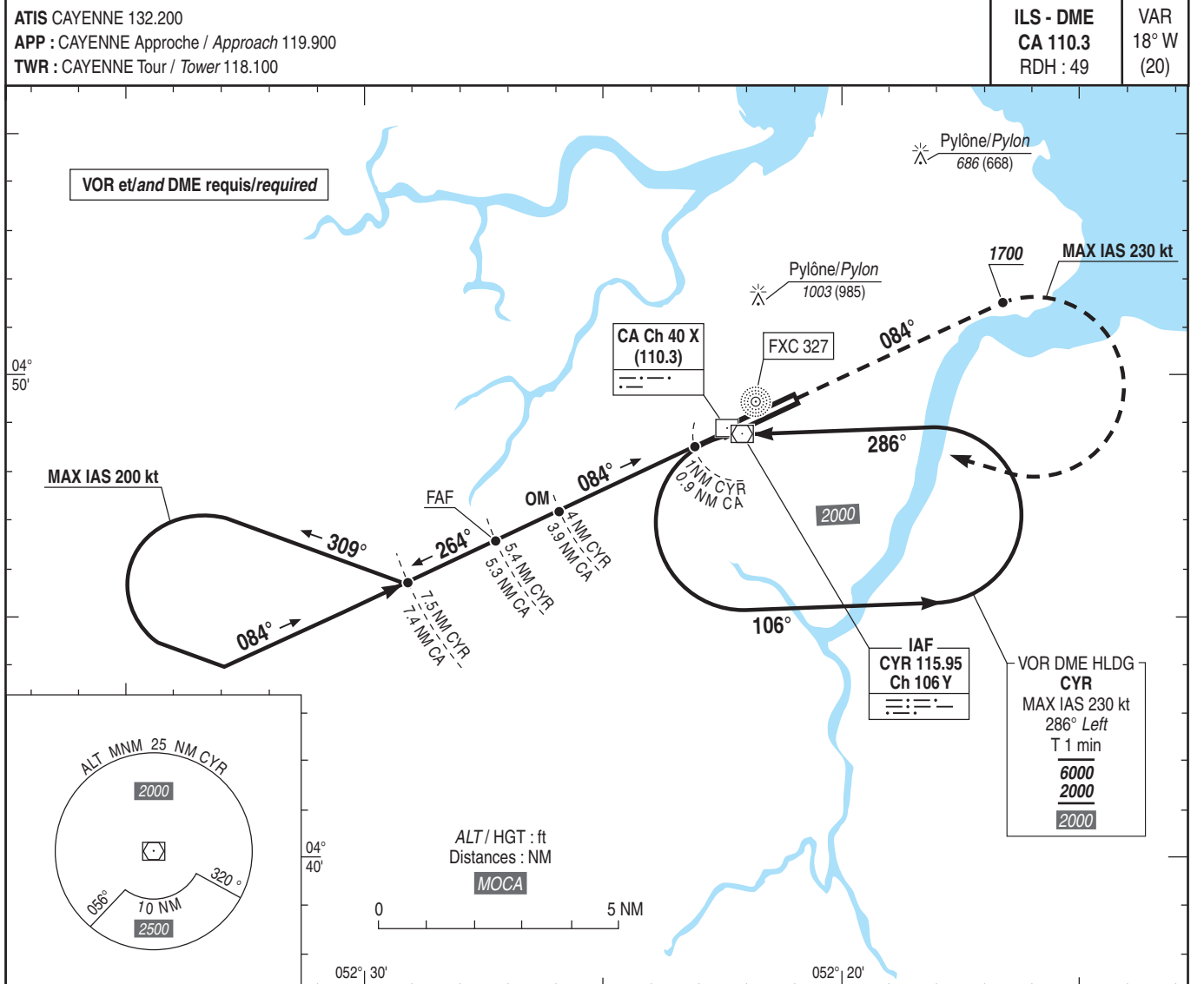
CAYENNE FELIX EBOUE

Instrument approach

CAT A B C D

ALT AD : 26, THR : 18 (1 hPa)

ILS Z ou/ or LOC Z RWY 08



| | | | | |
|------------|-----|-----|-----|---|
| → THR (NM) | 5.1 | 3.7 | 0.7 | 0 |
| → CA (NM) | 5.3 | 3.9 | 0.9 | |
| → CYR (NM) | 5.4 | 4 | 1 | |

MNM AD : distances verticales en pieds, RVR et VIS en mètres / vertical distances in feet, RVR and VIS in metres. REF HGT : ALT THR

| CAT | ILS Z | | | LOC Z | | | MVL / Circling (1) | | | DME CA | | | | | |
|-----|-----------|-----|-----|-----------|------|-----|--------------------|------|------|---------|--------|--------|-------|-------|-------|
| | DA (H) | RVR | OCH | MDA (H) | RVR | OCH | MDA (H) | VIS | OCH | NM | 5 | 4 | 3 | 2 | 1 |
| A | 280 (270) | | 257 | | 1500 | | 730 (720) | 1600 | 708 | ALT | 1590 | 1270 | 960 | 640 | 330 |
| B | 280 (270) | | 264 | | 1500 | | 730 (720) | 1600 | 711 | (HGT) | (1572) | (1252) | (942) | (622) | (312) |
| C | 300 (290) | 900 | 275 | 450 (440) | 1600 | 425 | 910 (900) | 2400 | 888 | DME CYR | | | | | |
| D | 300 (290) | | 285 | | 1600 | | 1090 (1080) | 3600 | 1072 | NM | 5 | 4 | 3 | 2 | 1 |
| DL | 310 (300) | | 291 | | - | - | - | - | - | ALT | 1560 | 1240 | 930 | 610 | 290 |
| | | | | | | | | | | (HGT) | (1542) | (1222) | (912) | (592) | (272) |

Observations / Remarks : (1) MVL interdites au Nord de la piste - HJ seulement / Circling prohibited North of RWY - HJ only.

| | | | | | | | | |
|--------------|--------|----------|----------|----------|----------|----------|----------|----------|
| FAF - THR | 5.1 NM | 70 kt | 85 kt | 100 kt | 115 kt | 130 kt | 160 kt | 185 kt |
| FAF - MAPT | 4.4 NM | 4 min 24 | 3 min 37 | 3 min 05 | 2 min 41 | 2 min 22 | 1 min 55 | 1 min 40 |
| VSP (ft/min) | | 370 | 450 | 530 | 610 | 685 | 845 | 980 |