

APPROCHE AUX INSTRUMENTS

CAYENNE FELIX EBOUE

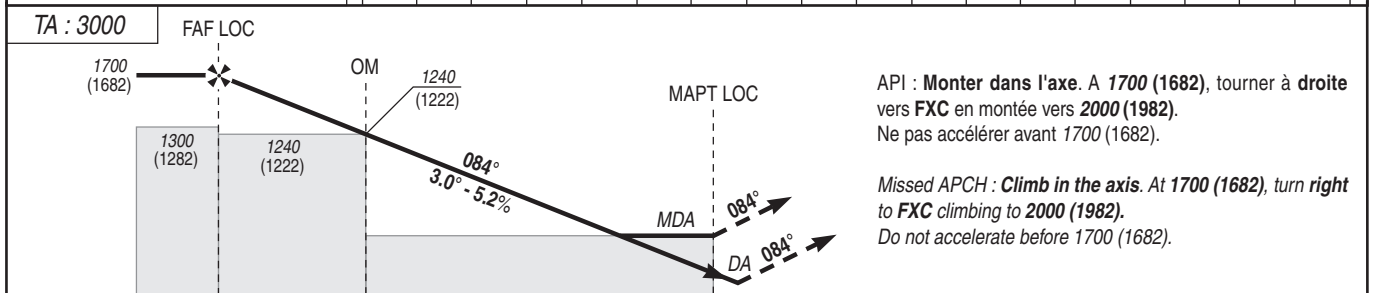
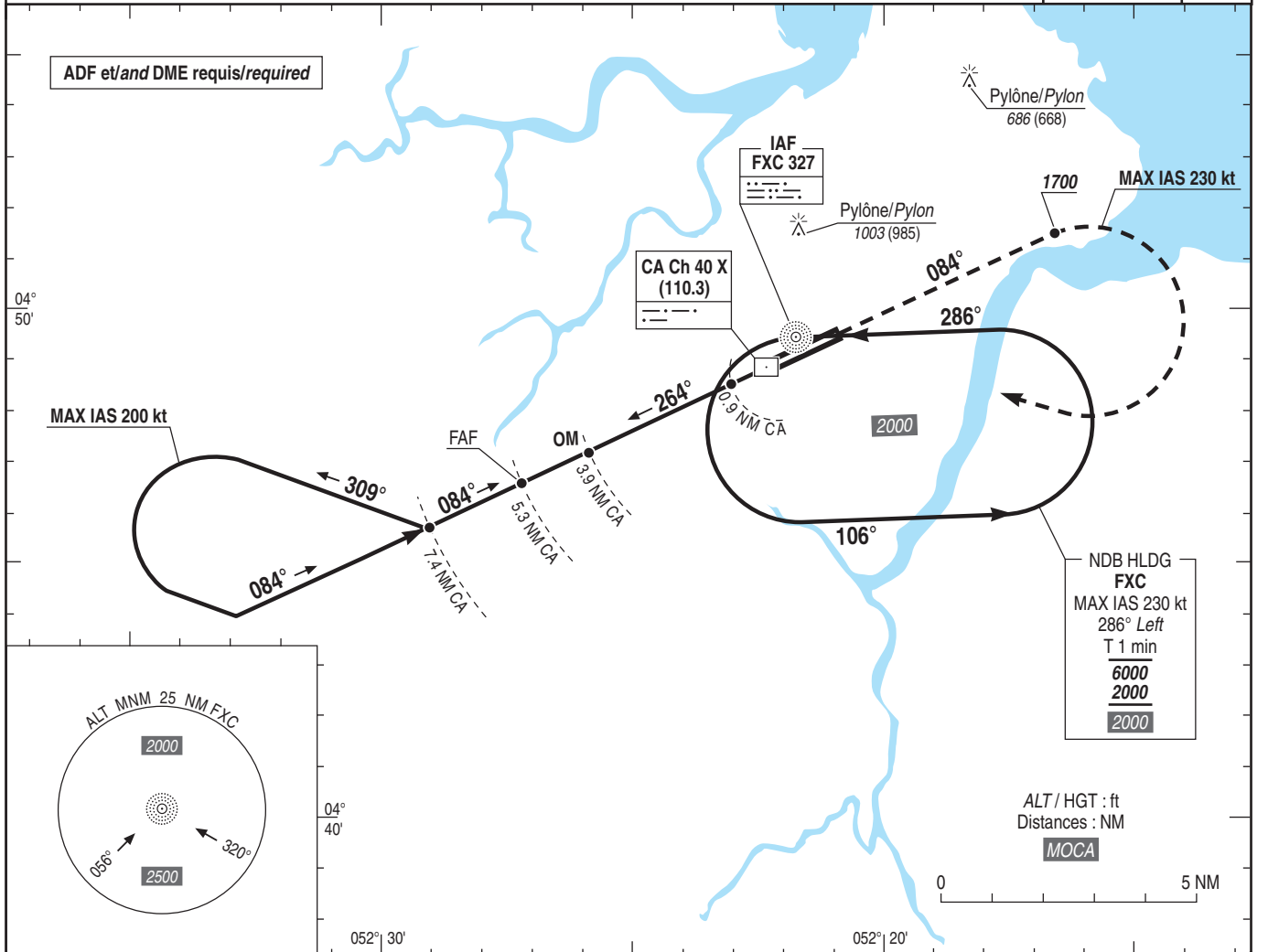
Instrument approach

CAT A B C D

ALT AD : 26, THR : 18 (1 hPa)

ILS X ou/ou LOC X RWY 08

ATIS CAYENNE 132.200 APP : CAYENNE Approche / Approach 119.900 TWR : CAYENNE Tour / Tower 118.100	ILS - DME CA 110.3 RDH : 49	VAR 18° W (20)
---	---	-----------------------------



→ THR (NM)	5.1	3.7	0.7	0
→ CA (NM)	5.3	3.9	0.9	

MNM AD : distances verticales en pieds, RVR et VIS en mètres / vertical distances in feet, RVR and VIS in metres. REF HGT : ALT THR

CAT	ILS X			LOC X			MVL / Circling (1)			DME CA
	DA (H)	RVR	OCH	MDA (H)	RVR	OCH	MDA (H)	VIS	OCH	
A	280 (270)		257		1500		730 (720)	1600	708	NM 5 4 3 2 1 ALT 1590 1270 960 640 330 (HGT) (1572) (1252) (942) (622) (312)
B	280 (270)		264		1500		730 (720)	1600	711	
C	300 (290)	900	275	450 (440)	1600	425	910 (900)	2400	888	
D	300 (290)		285		1600		1090 (1080)	3600	1072	
DL	310 (300)		291	-	-		-	-		

Observations / Remarks : (1) MVL interdites au Nord de la piste - HJ seulement / Circling prohibited North of RWY - HJ only.

FAF - THR	5.1 NM	70 kt	85 kt	100 kt	115 kt	130 kt	160 kt	185 kt
FAF - MAPT	4.4 NM	4 min 24	3 min 37	3 min 05	2 min 41	2 min 22	1 min 55	1 min 40
VSP (ft/min)		370	450	530	610	685	845	980