

**Subject** : Creation of 6 Temporary Restricted Areas (ZRT) over Paris and modification of parts of TMA Paris (parts 2, 3, 4, 5, 7 and 9)

**With effect** : From 19 July to 07 November 2018

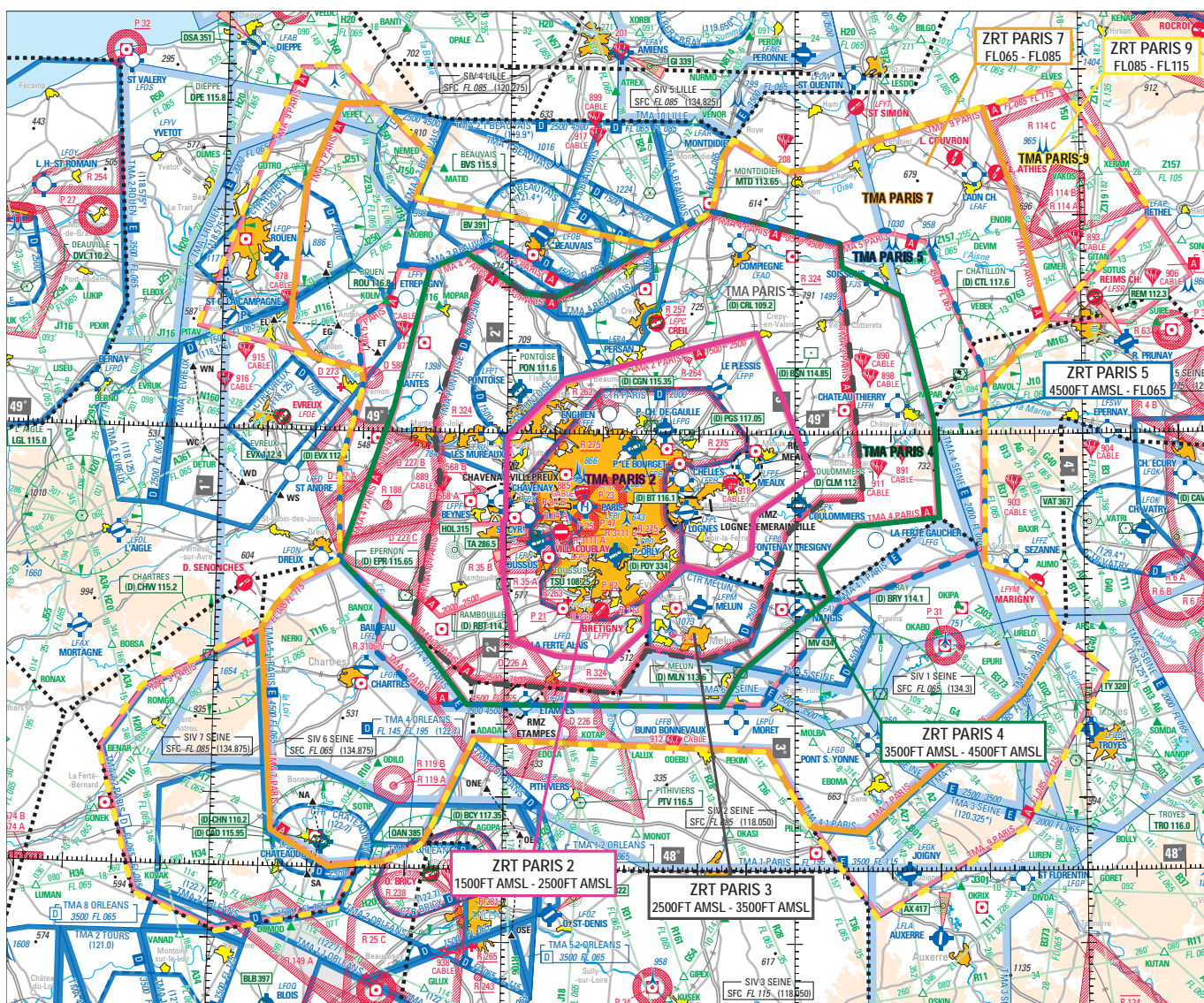
**Location**: FIR : Paris LFFF

The following airspace plan, which has been created to be consistent with the actual access conditions to Parisian airspace for GAT/IFR and GAT/VFR, will be included in AIP on cycle 12/18 (WEF 08 November 2018), as permanent Restricted Areas; in the meantime, the 6 following Temporary Restricted Areas have been created over Paris, which modify parts of Paris TMA.

**Note** :

To be consistent with the modified parts of Paris TMA, the ZRT have been named ZRT 2, 3, 4, 5, 7 and 9; ZRT1, 6 and 8 do not exist.

### GENERAL MAP - ZRTs AND PARIS TMA MODIFICATION OVERVIEW



From SIA 1 : 250 000 «Région Parisienne» map 2018 first edition

(sectional view on last page)

**ZRT PARIS 2**

LATERAL LIMITS	VERTICAL LIMITS	DATES AND TIMES OF ACTIVITY	MANAGING AUTHORITY
Identical to those of Paris TMA part 2	2500ft AMSL 1500ft AMSL	19 JUL to 07 NOV 2018 : H24	De Gaulle APP, Orly APP

**STATUS**

This Temporary Restricted Area (ZRT) coexists with PARIS TMA part 2. The Air Traffic Services provided are in accordance with the class of this portion of airspace and provided by the usual ATS units. excluding :	
<ul style="list-style-type: none"> <li>Areas LF-R 275 (Paris), LF-R 84 A, LF-R 3103 A-F, LF-R 3109 (La Ferté-Alais) and LF-R 3111 A</li> <li>PARIS CTR and VILLACOUBLAY CTR</li> <li>VILLACOUBLAY TMA</li> </ul>	when they are active.
excluding : Areas LF-P 21 BRUYERES LE CHATEL, LF-P 23 PARIS and LF-P 25 FONTENAY AUX ROSES, LF-P 47 BALARD. Exemption : see AIP ENR 5.1.	Entry is prohibited.

**ENTRY CONDITIONS**

<p><b>Inbound and outbound GAT IFR flights at :</b> BEAUVAIS TILLE, MELUN VILLAROCHE, PARIS CHARLES DE GAULLE, PARIS LE BOURGET, PARIS ORLY, PONTOISE CORMEILLES, TOUSSUS LE NOBLE, VILLACOUBLAY VELIZY : entry is authorized after radio contact with the managing authorities.</p> <p><b>Outbound GAT VFR/IFR (Z FPL) and inbound IFR/VFR (Y FPL) at aerodromes without IFR procedures :</b> With connection to the IFR procedures of BEAUVAIS TILLE, MELUN VILLAROCHE, PARIS LE BOURGET, PONTOISE CORMEILLES and TOUSSUS LE NOBLE and according to the instructions of the managing authorities.</p> <p><b>Other GAT IFR flights :</b> compulsory avoidance except for ACFT with a prior authorization from "Services de la Navigation Aérienne Région Parisienne » with at least 5 working days prior notice.</p> <ul style="list-style-type: none"> <li>For safety reason, restrictions on route, level and time may be imposed according to outbound and inbound traffic at Parisian airports.</li> <li>Relevant authorities : "SNA RP" (<a href="mailto:lfiff-sub-ctl-bf@aviation-civile.gouv.fr">lfiff-sub-ctl-bf@aviation-civile.gouv.fr</a>, <a href="mailto:lfpg-ctl@aviation-civile.gouv.fr">lfpg-ctl@aviation-civile.gouv.fr</a>, <a href="mailto:lfpo-sub-ctl@aviation-civile.gouv.fr">lfpo-sub-ctl@aviation-civile.gouv.fr</a>).</li> </ul> <p><b>VFR GAT flights :</b> compulsory avoidance except for aircraft conducting assistance, rescue or public safety missions, when the avoidance is not compatible with these missions; entry is possible after authorization from one of the managing authorities</p> <p><b>OAT flights :</b> Entry authorised after radio contact with one of the managing authorities.</p>
--

**USERS INFORMATION**

DE GAULLE APP and ORLY APP on the usual FREQ
--

**Caution :**  
PARIS TMA part 2 coexists with ZRT PARIS 2 setting entry restrictions for IFR and VFR GAT flights in this portion of PARIS TMA (see AIP ENR 2.3)

ZRT PARIS 3			
LATERAL LIMITS	VERTICAL LIMITS	DATES AND TIMES OF ACTIVITY	MANAGING AUTHORITY
Identical to those of Paris TMA part 3	3500ft AMSL 2500ft AMSL	19 JUL to 07 NOV 2018 : H24	De Gaulle APP, Orly APP

STATUS	
This Temporary Restricted Area (ZRT) coexists with PARIS TMA part 3. The Air Traffic Services provided are in accordance with the class of this portion of airspace and provided by the usual ATS units.	
excluding the following areas : LF-R 84 A, LF-R 3100 A-B-J, LF-R 3102 A-B-C-V, LF-R 3103 A-B-F-G-H, LF-R 3104 C, LF-R 3107, LF-R 3109 (La Ferté-Alais), LF-R 3110 (Persan) and LF-R 3111 A	when they are active.
excluding : Areas LF-P 21 BRUYERES LE CHATEL, LF-P 23 PARIS and LF-P 25 FONTENAY AUX ROSES. Exemption : see AIP ENR 5.1.	Entry is prohibited.

ENTRY CONDITIONS
<p><b>Inbound and outbound GAT IFR flights at :</b> BEAUVAIS TILLE, MELUN VILLAROCHE, PARIS CHARLES DE GAULLE, PARIS LE BOURGET, PARIS ORLY, PONTOISE CORMEILLES, TOUSSUS LE NOBLE, VILLACOUBLAY VELIZY : entry is authorized after radio contact with the managing authorities.</p> <p><b>Outbound GAT VFR/IFR (Z FPL) and inbound IFR/VFR (Y FPL) at aerodromes without IFR procedures :</b> With connection to the IFR procedures of BEAUVAIS TILLE, MELUN VILLAROCHE, PARIS LE BOURGET, PONTOISE CORMEILLES and TOUSSUS LE NOBLE and according to the instructions of the managing authorities.</p> <p><b>Other GAT IFR flights :</b> compulsory avoidance except for ACFT with a prior authorization from "Services de la Navigation Aérienne Région Parisienne » with at least 5 working days prior notice.</p> <ul style="list-style-type: none"> <li>For safety reason, restrictions on route, level and time may be imposed according to outbound and inbound traffic at Parisian airports.</li> <li>Relevant authorities : "SNA RP" (<a href="mailto:liff-sub-ctl-bf@aviation-civile.gouv.fr">liff-sub-ctl-bf@aviation-civile.gouv.fr</a>, <a href="mailto:lfpg-ctl@aviation-civile.gouv.fr">lfpg-ctl@aviation-civile.gouv.fr</a>, <a href="mailto:lfpo-sub-ctl@aviation-civile.gouv.fr">lfpo-sub-ctl@aviation-civile.gouv.fr</a> ).</li> </ul> <p><b>VFR GAT flights :</b> compulsory avoidance except for aircraft conducting assistance, rescue or public safety missions, when the avoidance is not compatible with these missions; entry is possible after authorization from one of the managing authorities</p> <p><b>OAT flights :</b> Entry is authorized after radio contact with one of the managing authorities.</p>

USERS INFORMATION
DE GAULLE APP and ORLY APP on the usual FREQ

**Caution :**

PARIS TMA part 3 coexists with ZRT PARIS 3 setting entry restrictions for IFR and VFR GAT flights in this portion of PARIS TMA (see AIP ENR 2.3)

**ZRT PARIS 4**

LATERAL LIMITS	VERTICAL LIMITS	DATES AND TIMES OF ACTIVITY	MANAGING AUTHORITY
Identical to those of Paris TMA part 4	4500ft AMSL 3500ft AMSL	19 JUL to 07 NOV 2018 : H24	De Gaulle APP, Orly APP

**STATUS**

This Temporary Restricted Area (ZRT) coexists with PARIS TMA part 4. The Air Traffic Services provided are in accordance with the class of this portion of airspace and provided by the usual ATS units. excluding the following areas : LF-R 84 A, LF-R 3100 B-C-D-F-H, LF-R 3101 B-C-D, LF-R 3102 A-B-C-V, LF-R 3103 C-D-H-J-K-M, LF-R 3104 A-B-C-D-F-G-V, LF-R 3105 A-C-D, LF-R 3106 B-C-D and LF-R 3111 A		when they are active.
excluding : Areas LF-P 21 BRUYERES LE CHATEL, LF-P 23 PARIS and LF-P 25 FONTENAY AUX ROSES. Exemption : see AIP ENR 5.1.		Entry is prohibited.

**ENTRY CONDITIONS**

<p><b>Inbound and outbound GAT IFR flights at :</b> BEAUVAIS TILLE, MELUN VILLAROCHE, PARIS CHARLES DE GAULLE, PARIS LE BOURGET, PARIS ORLY, PONTOISE CORMEILLES, TOUSSUS LE NOBLE, VILLACOUBLAY VELIZY : entry is authorized after radio contact with the managing authorities.</p> <p><b>Outbound GAT VFR/IFR (Z FPL) and inbound IFR/VFR (Y FPL) at aerodromes without IFR procedures :</b> with connection to the IFR procedures of BEAUVAIS TILLE, MELUN VILLAROCHE, PARIS LE BOURGET, PONTOISE CORMEILLES and TOUSSUS LE NOBLE and according to the instructions of the managing authorities.</p> <p><b>Other GAT IFR flights :</b> compulsory avoidance except for ACFT with a prior authorization from "Services de la Navigation Aérienne Région Parisienne » with at least 5 working days prior notice.</p> <ul style="list-style-type: none"> <li>For safety reason, restrictions on route, level and time may be imposed according to outbound and inbound traffic at Parisian airports.</li> <li>Relevant authorities : "SNA RP" (<a href="mailto:lfff-sub-ctl-bf@aviation-civile.gouv.fr">lfff-sub-ctl-bf@aviation-civile.gouv.fr</a>, <a href="mailto:lfpg-ctl@aviation-civile.gouv.fr">lfpg-ctl@aviation-civile.gouv.fr</a>, <a href="mailto:lfpo-sub-ctl@aviation-civile.gouv.fr">lfpo-sub-ctl@aviation-civile.gouv.fr</a> ).</li> </ul> <p><b>VFR GAT flights :</b> compulsory avoidance except for aircraft conducting assistance, rescue or public safety missions, when the avoidance is not compatible with these missions; entry is possible after authorization from one of the managing authorities</p> <p><b>OAT flights :</b> Entry is authorized after radio contact with one of the managing authorities.</p>
--

**USERS INFORMATION**

DE GAULLE APP and ORLY APP on the usual FREQ
--

**Caution :**

PARIS TMA part 4 coexists with ZRT PARIS 4 setting entry restrictions for IFR and VFR GAT flights in this portion of PARIS TMA (see AIP ENR 2.3)

## ZRT PARIS 5

LATERAL LIMITS	VERTICAL LIMITS	DATES AND TIMES OF ACTIVITY	MANAGING AUTHORITY
Identical to those of Paris TMA part 5	FL065 4500ft AMSL	19 JUL to 07 NOV 2018 : H24	De Gaulle APP, Orly APP

## STATUS

This Temporary Restricted Area (ZRT) coexists with PARIS TMA part 5. The Air Traffic Services provided are in accordance with the class of this portion of airspace and provided by the usual ATS units. excluding the following areas : LF-R 3100 D-E-F-G-K-L-M, LF-R 3101 A-B, LF-R 3102 C-E-V, LF-R 3103 D-E-K-L-M-N-P, LF-R 3104 B-D-E-H-J-K-V, LF-R 3105 A-B-D-E-F, LF-R 3106 A-B-V and LF-R 3111 A-B		when they are active.
excluding : Area LF-P 23 PARIS. Exemption : see AIP ENR 5.1.		Entry is prohibited.

## ENTRY CONDITIONS

<p><b>Inbound and outbound GAT IFR flights at :</b> BEAUVAIS TILLE, MELUN VILLAROCHE, PARIS CHARLES DE GAULLE, PARIS LE BOURGET, PARIS ORLY, PONTOISE CORMEILLES, TOUSSUS LE NOBLE, VILLACOUBLAY VELIZY : entry is authorized after radio contact with the managing authorities.</p> <p><b>Outbound GAT VFR/IFR (Z FPL) and inbound IFR/VFR (Y FPL) at aerodromes without IFR procedures :</b> With connection to the IFR procedures of BEAUVAIS TILLE, MELUN VILLAROCHE, PARIS LE BOURGET, PONTOISE CORMEILLES and TOUSSUS LE NOBLE and according to the instructions of the managing authorities.</p> <p><b>Other GAT IFR flights :</b> compulsory avoidance except for ACFT with a prior authorization from "Services de la Navigation Aérienne Région Parisienne » with at least 5 working days prior notice.</p> <ul style="list-style-type: none"> <li>For safety reason, restrictions on route, level and time may be imposed according to outbound and inbound traffic at Parisian airports.</li> <li>Relevant authorities : "SNA RP" (<a href="mailto:lfff-sub-ctl-bf@aviation-civile.gouv.fr">lfff-sub-ctl-bf@aviation-civile.gouv.fr</a>, <a href="mailto:lfpq-ctl@aviation-civile.gouv.fr">lfpq-ctl@aviation-civile.gouv.fr</a>, <a href="mailto:lfpo-sub-ctl@aviation-civile.gouv.fr">lfpo-sub-ctl@aviation-civile.gouv.fr</a> ).</li> </ul> <p><b>VFR GAT flights :</b> compulsory avoidance except for aircraft conducting assistance, rescue or public safety missions, when the avoidance is not compatible with these missions; entry is possible after authorization from one of the managing authorities</p> <p><b>OAT flights :</b> Entry is authorized after radio contact with one of the managing authorities.</p>
--

## USERS INFORMATION

DE GAULLE APP and ORLY APP on the usual FREQ
--

## Caution :

PARIS TMA part 5 coexists with ZRT PARIS 5 setting entry restrictions for IFR and VFR GAT flights in this portion of PARIS TMA (see AIP ENR 2.3)



**ZRT PARIS 7**

LATERAL LIMITS	VERTICAL LIMITS	DATES AND TIMES OF ACTIVITY	MANAGING AUTHORITY
Identical to those of Paris TMA part 7	FL085 FL065	19 JUL to 07 NOV 2018 : H24	De Gaulle APP, Orly APP

**STATUS**

<p>This Temporary Restricted Area (ZRT) coexists with PARIS TMA part 7. The Air Traffic Services provided are in accordance with the class of this portion of airspace and provided by the usual ATS units. excluding :</p> <ul style="list-style-type: none"> <li>Orléans TMA part 2</li> <li>Restricted Areas LF-R 3102 C-D-E and LF-R 3111 B</li> </ul>		when they are active.
--	--	-----------------------

**ENTRY CONDITIONS**

<p><b>Inbound and outbound GAT IFR flights at :</b> BEAUVAIS TILLE, MELUN VILLAROCHE, PARIS CHARLES DE GAULLE, PARIS LE BOURGET, PARIS ORLY, PONTOISE CORMEILLES, TOUSSUS LE NOBLE, VILLACOUBLAY VELIZY : entry is authorized after radio contact with the managing authorities.</p> <p><b>Outbound GAT VFR/IFR (Z FPL) and inbound IFR/VFR (Y FPL) at aerodromes without IFR procedures :</b> With connection to the IFR procedures of BEAUVAIS TILLE, MELUN VILLAROCHE, PARIS LE BOURGET, PONTOISE CORMEILLES and TOUSSUS LE NOBLE and according to the instructions of the managing authorities.</p> <p><b>Other GAT IFR flights :</b> compulsory avoidance except for ACFT with a prior authorization from "Services de la Navigation Aérienne Région Parisienne » with at least 5 working days prior notice.</p> <ul style="list-style-type: none"> <li>For safety reason, restrictions on route, level and time may be imposed according to outbound and inbound traffic at Parisian airports.</li> <li>Relevant authorities : "SNA RP" (<a href="mailto:lfff-sub-ctl-bf@aviation-civile.gouv.fr">lfff-sub-ctl-bf@aviation-civile.gouv.fr</a>, <a href="mailto:lfpg-ctl@aviation-civile.gouv.fr">lfpg-ctl@aviation-civile.gouv.fr</a>, <a href="mailto:lfpo-sub-ctl@aviation-civile.gouv.fr">lfpo-sub-ctl@aviation-civile.gouv.fr</a> ).</li> </ul> <p><b>VFR GAT flights :</b> compulsory avoidance except for aircraft conducting assistance, rescue or public safety missions, when the avoidance is not compatible with these missions; entry is possible after authorization from one of the managing authorities.</p> <p><b>OAT flights :</b> Entry is authorized after radio contact with one of the managing authorities.</p>
---

**USERS INFORMATION**

DE GAULLE APP and ORLY APP on the usual FREQ
--

**Caution :**

PARIS TMA part 7 coexists with ZRT PARIS 7 setting entry restrictions for IFR and VFR GAT flights in this portion of PARIS TMA (see AIP ENR 2.3)

## ZRT PARIS 9

LATERAL LIMITS	VERTICAL LIMITS	DATES AND TIMES OF ACTIVITY	MANAGING AUTHORITY
Identical to those of Paris TMA part 9	FL115 FL085	19 JUL to 07 NOV 2018 : H24	De Gaulle APP, Orly APP

## STATUS

This Temporary Restricted Area (ZRT) coexists with PARIS TMA part 9.  
 The Air Traffic Services provided are in accordance with the class of this portion of airspace and provided by the usual ATS units.  
 Excluding Orléans TMA part 2 and Restricted Area LF-R 3111 B when they are active.

## ENTRY CONDITIONS

**Inbound and outbound GAT IFR flights at :** BEAUVAIS TILLE, MELUN VILLAROCHE, PARIS CHARLES DE GAULLE, PARIS LE BOURGET, PARIS ORLY, PONTOISE CORMEILLES, TOUSSUS LE NOBLE, VILLACOUBLAY VELIZY :  
 entry is authorized after radio contact with the managing authorities.

**Outbound GAT VFR/IFR (Z FPL) and inbound IFR/VFR (Y FPL) at aerodromes without IFR procedures :**

With connection to the IFR procedures of BEAUVAIS TILLE, MELUN VILLAROCHE, PARIS LE BOURGET, PONTOISE CORMEILLES and TOUSSUS LE NOBLE and according to the instructions of the managing authorities.

**Other GAT IFR flights :**

compulsory avoidance except for ACFT with a prior authorization from "Services de la Navigation Aérienne Région Parisienne" with at least 5 working days prior notice.

- For safety reason, restrictions on route, level and time may be imposed according to outbound and inbound traffic at Parisian airports.
- Relevant authorities : "SNA RP" ([lfff-sub-ctl-bf@aviation-civile.gouv.fr](mailto:lfff-sub-ctl-bf@aviation-civile.gouv.fr), [lfpg-ctl@aviation-civile.gouv.fr](mailto:lfpg-ctl@aviation-civile.gouv.fr), [lfpo-sub-ctl@aviation-civile.gouv.fr](mailto:lfpo-sub-ctl@aviation-civile.gouv.fr)).

**VFR GAT flights :**

compulsory avoidance except for aircraft conducting assistance, rescue or public safety missions, when the avoidance is not compatible with these missions; entry is possible after authorization from one of the managing authorities

**OAT flights :**

Entry is authorized after radio contact with one of the managing authorities.

## USERS INFORMATION

DE GAULLE APP and ORLY APP on the usual FREQ

## Caution :

PARIS TMA part 9 coexists with ZRT PARIS 9 setting entry restrictions for IFR and VFR GAT flights in this portion of PARIS TMA (see AIP ENR 2.3)

## Paris TMA / ZRT sectional view

LTA (D)

