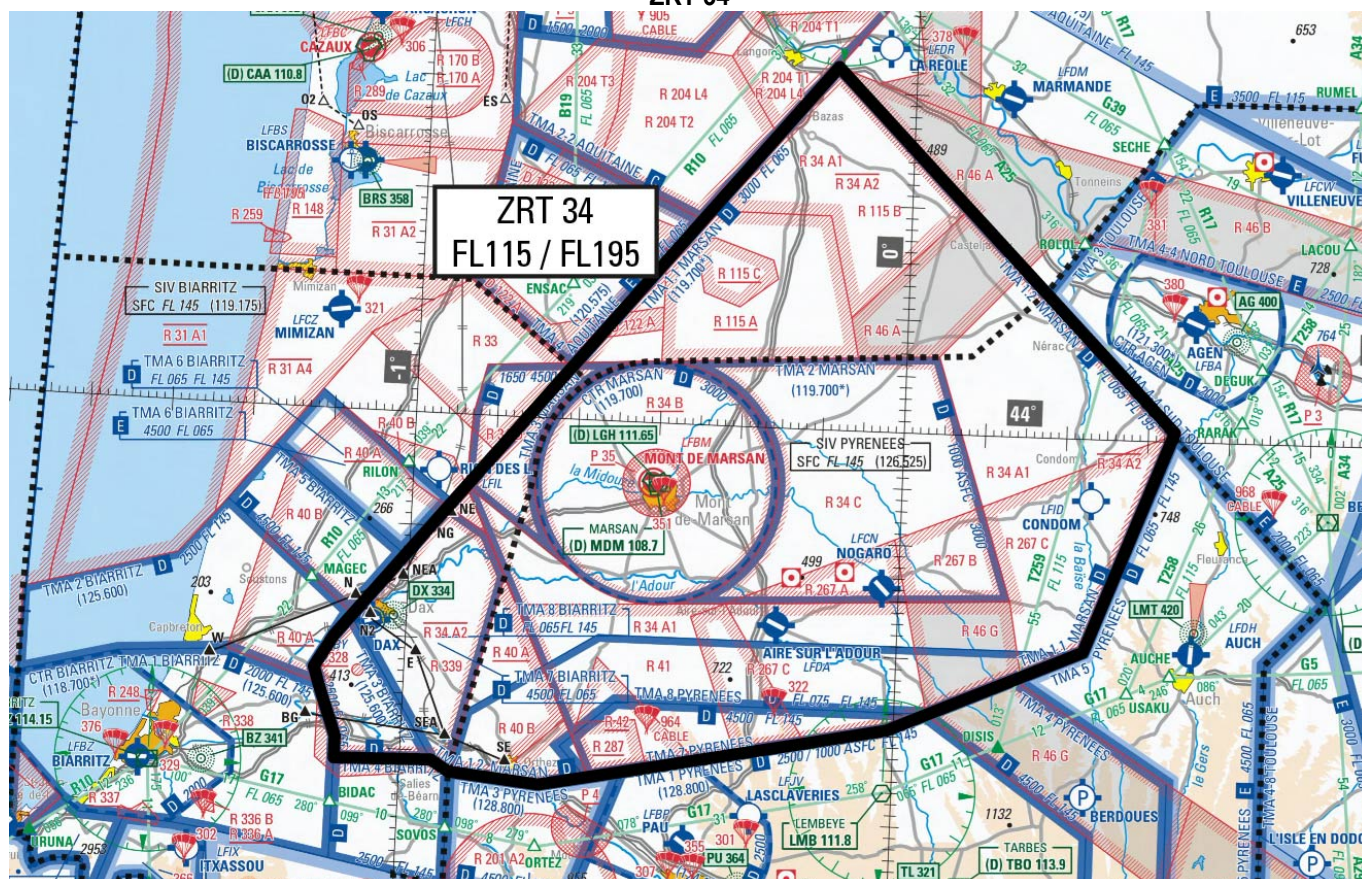


Subject : Creation of a Temporary Restricted Area (ZRT) with activation by NOTAM to continue the activity of military aircraft, without the usual services of the ESCA of Mont de Marsan

With effect : From 5 july 2021 to 30 july 2021

Location: FIR : Bordeaux LFBB – AD : Condom LFID, Nogaro LFCN, Aire-sur-l'Adour LFDA, Mont de Marsan LFBM, Pau Pyrénées LFBP, Rion des Landes LFIL, Dax LFBY, Biarritz LFBZ

ZRT 34



Excerpt from 1 / 1 000 000 SIA map "France Sud" 2021 edition

ACTIVITY

Specific Defense activities with temporary replacement of the usual managing authority of Area R34 A2 (MONT DE MARSAN) by a Control and Reporting Center (CRC) (see item "MANAGING AUTHORITY")

DATES AND TIMES OF ACTIVITY

ZRT 34 activation is possible by NOTAM 2 days before, from Monday to Friday except holidays:

Mondays : 0830-1030, 1300-1500

Tuesdays and Thursdays : 0700-0830, 1000-1200, 1300-1500, 1800-2000

Wednesdays : 0700-0830, 1000-1200, 1300-1500

Fridays : 0700-0830, 1000-1200

MANAGING AUTHORITY

Mont-de-Marsan Control and Reporting Center or, if unavailable, back-up CRC.

USER INFORMATION

Actual time slots provided by :

MARINA (Mont-de-Marsan CRC) : 143.550 MHz / 317.500 MHz
 Bordeaux ACC : Control frequencies
 Aquitaine INFO : 120.575 MHz
 Pyrénées INFO : 126.525 MHz
 Pyrénées APP : 128.800 MHz
 Biarritz INFO : 119.175 MHz

STATUS

Temporary Restricted Areas (ZRTs) coexisting with the portions of controlled airspace with which they overlap, and replacing the portions of restricted areas with which they overlap.

ENTRY CONDITIONS

GAT and OAT: Compulsory avoidance except for :

- aircraft under GAT/IFR, upon authorization from the managing authority,
- aircraft under OAT with authorization from the managing authority,
- aircraft conducting assistance, rescue or public safety missions, when the avoidance is not compatible with these missions; entry is possible after coordination with the managing authority.

SERVICES PROVIDED

OAT : control, flight information and alert are provided in these Tempo Areas by the managing authorities.

GAT : In the parts of ZRT coexisting with controlled airspace, the usual ATC units provide to users cleared into these Areas, the air traffic services in accordance with the class of the above-mentioned airspace.

LATERAL AND VERTICAL LIMITS

Lateral limits

Identical to those of Area LF-R 34 A2 publiée à l'AIP FRANCE ENR 5.1

Vertical limits

FL 115 / FL 195

SPECIAL PROVISIONS

Lower airspace :

GAT/OAT : The Areas LF-R 34 and Mont de Marsan CTR and TMA will not be activated from July 5th to 30th, 2021.

Light, sporting and recreational aviation activities :

All sporting and recreational aviation activities are prohibited within the ZRT.

RELEVANT AUTHORITIES CONTACT DETAILS

Outside the ZRT activation time slots :

Commandement de la Défense Aérienne et des Opérations Aériennes /
 SCAA (Sous-Chefferie Activités aérienne):
 Phone : +33(0)4 87 65 57 99 or +33(0)4 87 65 57 98
 PNIA : 811 942 4799 (98)

During the ZRT activation time slots :

Mont-de-Marsan Control and Reporting Centre (CRC)
 Phone : +33(0)5 58 06 84 51

Lyon Mont Verdun (back up CRC)
 Phone : +33(0)4 26 72 83 99 or +33(0)4 78 14 65 21