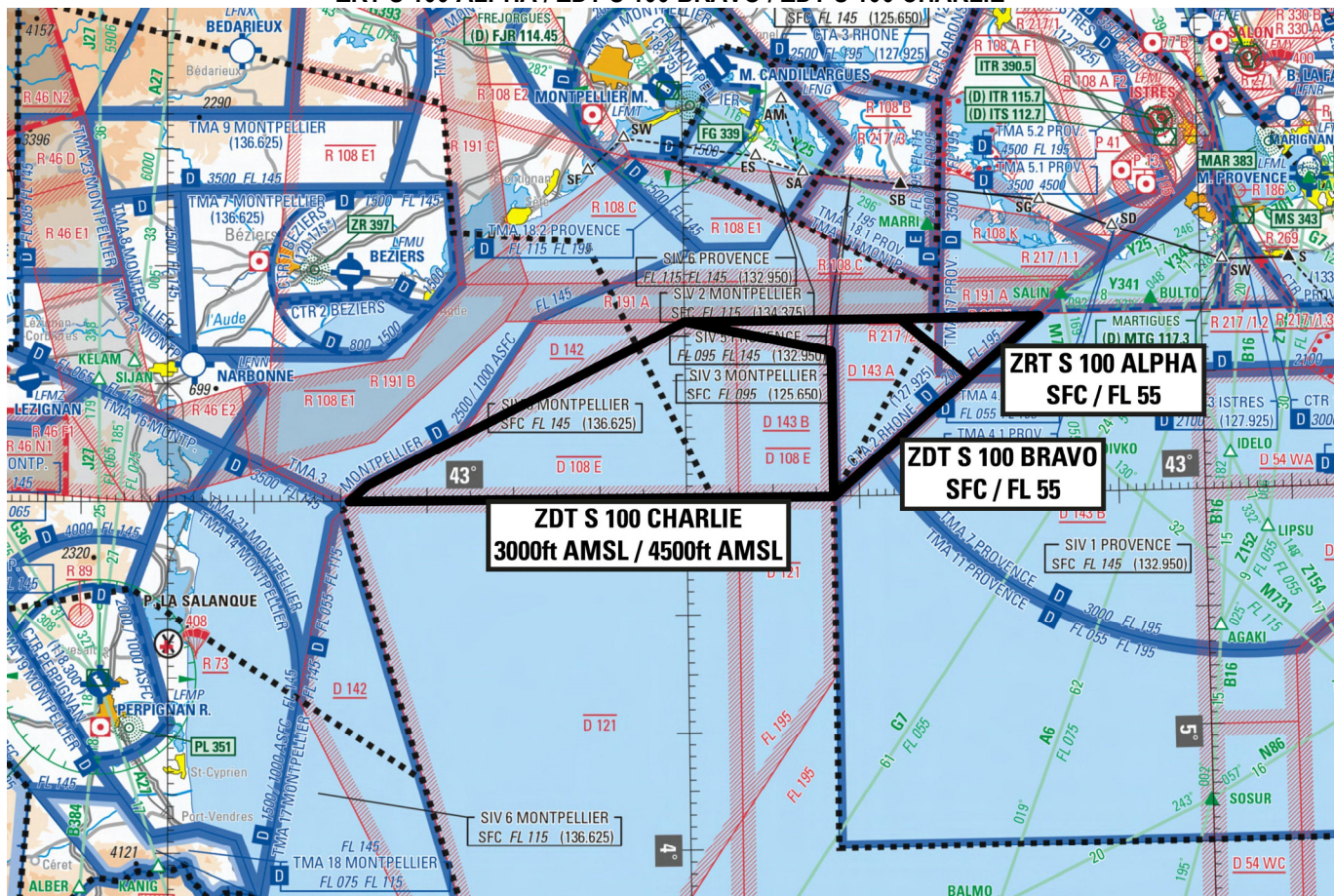


Subject : Creation of a Temporary Restricted Zone (ZRT) and two Tempo Danger Areas (ZDT) S 100 for
unmanned ACFT flying in Marseille FIR LFMM

With effect : From 28 June 2021 to 31 March 2022

ZRT S 100 ALPHA / ZDT S 100 BRAVO / ZDT S 100 CHARLIE



Excerpt from 1 / 1 000 000 "France Sud" SIA map 2021 edition

ACTIVITY

Unmanned ACFT test flights.

DATES AND TIMES OF ACTIVITY

ZRT S 100 ALPHA and ZDT S 100 BRAVO and CHARLIE activation is possible by NOTAM for 3 periods of 15 consecutive days or less, from 28 June 2021 to 31 March 2022.

Activation of ZDT S 100 CHARLIE implies the activation of Area LF-D 108 E.

Activation of this airspace plan : see "SPECIAL PROVISIONS".

USER INFORMATION

Actual time slots provided by :

- PROVENCE INFO : 132.950 MHz
 - PROVENCE APP : 121.430 MHz
 - MONTPELLIER INFO : 136.625 MHz / 134.375 MHz
 - MONTPELLIER APP : 130.855 MHz / 131.055 MHz
 - CAMARGUE CONTROLE : 127.925 MHz
 - ISTRES APPROCHE : 278.675 MHz

STATUS

ZRT or ZDT :

Temporary Restricted Area (ZRT) for the portion located within 12 NM from coasts (territorial waters limit),
 Temporary Danger Areas (ZDT) for the portions located beyond 12 NM from coasts (territorial waters limit).

These areas replace the portions of airspace with which they overlap.

MANAGING AUTHORITY

« Centre de Contrôle d'Essais et de Réception d'Istres » (« CCER Istres »)

ENTRY CONDITIONS

ZRT S 100 ALPHA :

GAT / OAT, entry is possible upon authorization from "CCER Istres".

ZDT S 100 BRAVO and ZDT S 100 CHARLIE :

Airspace users must be aware of the particularly dangerous nature of the activities taking place in these Areas. It is recommended not to enter these Areas.
 Comply with the usual ATS units instructions.

SERVICES PROVIDED

OAT involved in the test activity : CTL, flight information and alert provided in these Tempo Areas by the Managing Authority.

GAT / OAT (not involved in the activity) : within the portions of ZRT and ZDT coexisting with controlled airspaces, the usual ATC units provide, to users cleared into the ZRT and ZDTs, Air Traffic Services in accordance with the class of these controlled airspaces.

LATERAL AND VERTICAL LIMITS

| ZRT S 100 ALPHA | ZDT S 100 BRAVO | ZDT S 100 CHARLIE |
|--|---|--|
| 43°10'00"N, 004°33'00.0"E 43°15'00"N, 004°25'00.0"E 43°15'00"N, 004°41'10.0"E 43°10'00"N, 004°33'00.0"E | 43°00'00"N, 004°17'0.0"E 43°12'21"N, 004°17'0.0"E 43°15'0.0"N, 004°00'0.0"E 43°15'0.0"N, 004°25'0.0"E 43°10'0.0"N, 004°33'0.0"E 43°00'00"N, 004°17'0.0"E | 43°00'00"N, 004°17'00"E 43°00'00"N, 003°21'00"E 43°01'21"N, 003°23'09"E 43°15'00"N, 004°00'00"E 43°12'21"N, 004°17'00"E 43°00'00"N, 004°17'00"E |
| SFC / FL 055 | SFC / FL 055 | 3000 ft AMSL / 4500 ft AMSL |

SPECIAL PROVISIONS

Urgent missions :

For aircraft flying as part of urgent missions (Emergency Medical Service, customs, public safety, Gendarmerie, Police, maritime patrol...) and not able to avoid the activated Temporary Areas, priority will be granted to these ACFT so they can fly through the Tempo Areas. **Transiting of these flights will be coordinated with "CCER d'Istres".**

Use of Tempo Areas ZRT S 100 ALPHA, ZDT S 100 BRAVO and ZDT S 100 CHARLIE :

- Each period of activation of the ZRT/ZDT, for 15 consecutive days or less, will be made with at least 48 hour prior notice by NOTAM
- Activation of **ZRT S 100 ALPHA, ZDT S 100 BRAVO and ZDT S 100 CHARLIE** implies that overlapping temporary airspace plans published by the aeronautical information services are not activated simultaneously.
- In accordance with the status of Area LF-D 121 GOLFE DU LION as defined in AIP France ENR 5.1, and in compliance with DIRCAM instruction No 1550 / DIRCAM about the Rules and Flight operation procedures for Drones flying under OAT rules during peace time, **Area D 121 will be used for the drone flight test in addition to the use of ZRT S 100 ALPHA, ZDT S 100 BRAVO and ZDT S 100 CHARLIE.**

RELEVANT AUTHORITIES CONTACT DETAILS

Before the exercise :

DGA Essais en Vol / Division CER / Coordination
 Site d'essai d'Istres
 13804 Istres Cedex
 Phone : +33 (0)4 42 48 36 09
 +33 (0)4 42 48 36 67 or 36 68.

During the exercise :

Centre de Contrôle d'Essais et de Réception (CCER Istres) :
 Phone : +33 (0)4 42 48 36 02 or 36.