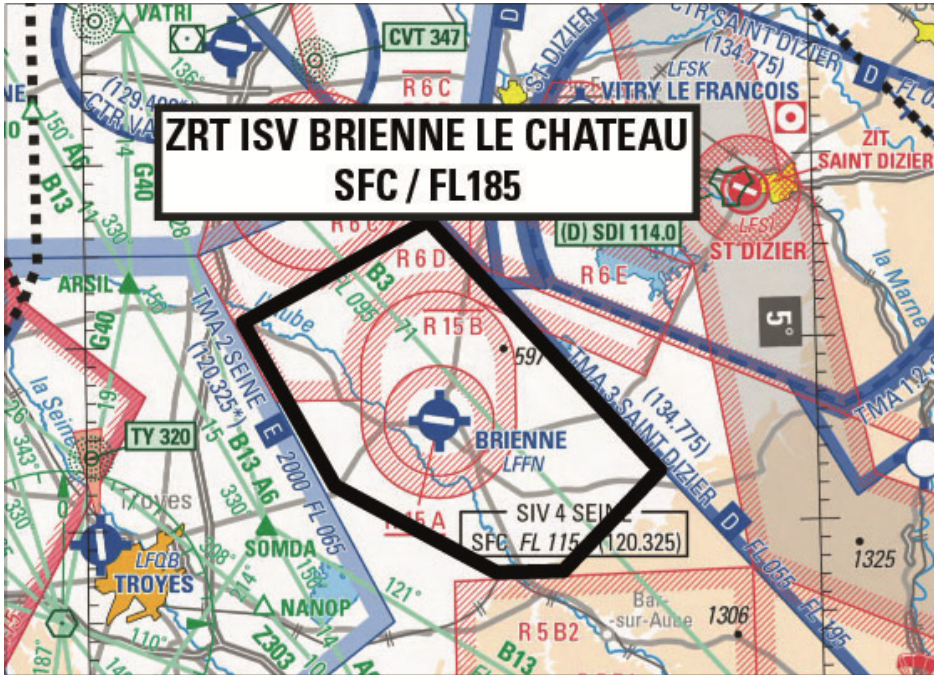




Subject : Creation of a Temporary Restricted Area (ZRT) for drifting under canopy activities over Brienne-le-Chateau (FIR : Paris LFFF)

With effect : From 15 June to 19 June 2020

Location: FIR : Paris LFFF - AD : Brienne-le-Chateau LFFN



ACTIVITY

Gendarmerie parachute training requiring air-drops and drifting under canopy ("ISV").

DATES AND TIMES OF ACTIVITY

From 15 to 19 JUN 2020 :
ZRT ISV Brienne can be activated every day from 0800 to 2000.

USER INFORMATION

Actual time slots provided by:
Seine INFO : 120.325 MHz.
Paris INFO : 126.100 MHz
Saint-Dizier APP : 134.775 MHz

MANAGING AUTHORITY

« CELLULE PARACHUTISME GIGN »

STATUS

Tempo Restricted Area (ZRT) coexisting, when it is active, with Restricted Areas LF-R 15 A and B Brienne-le-Chateau (AIP FRANCE ENR 5.1) and replacing the other portions of airspace with which it overlaps.

ENTRY CONDITIONS

GAT IFR / OAT : compulsory avoidance.

GAT VFR : compulsory avoidance except for :

- ACFT based at Brienne-le-Chateau AD and ACFT using Blignicourt helipad ; entry is possible after receiving permission from « CELLULE PARACHUTISME GIGN » on FREQ 123.425 MHz,
- ACFT conducting assistance, rescue, or public safety missions, when the avoidance is not compatible with these missions ; entry is possible after authorization from « CELLULE PARACHUTISME GIGN » on 123.425 MHz.

SERVICES PROVIDED

Flight information and alert

LATERAL AND VERTICAL LIMITS

48°31'20"N, 004°12'56"E
48°36'45"N, 004°28'18"E
48°22'53"N, 004°46'56"E
48°17'29"N, 004°38'52"E
48°17'29"N, 004°33'21"E
48°22'21"N, 004°20'16"E
48°31'20"N, 004°12'56"E

SFC / FL185

SPECIAL PROVISIONS

When the ZRT is active, AWY B3 is unavailable between VATRI and RLP. TFC on the RLP-VATRI segment on concerned levels will be rerouted via RLP-SOMDA-ARSIL-VATRI.

Parachuting activities within Restricted Areas LF-R 15 A and B Brienne-le-Chateau may be operated in coordination with GIGN.

ADDITIONAL INFORMATION

Every day between 0800 and 2000, activation of 8 one-hour slots (6 at FL 180 and 2 at FL 145).
Activity schedule available every day from 0700, from « responsable d'activité largage » (air-drop manager).

RELEVANT AUTHORITIES CONTACT DETAILS

Before activity

« Cellule 3D du GIGN », phone : +33(0)1.77.78.42.55 / +33(0)6.84.83.85.84

During activity

« Directeur de séance de saut », phone : +33(0)6.84.83.85.84