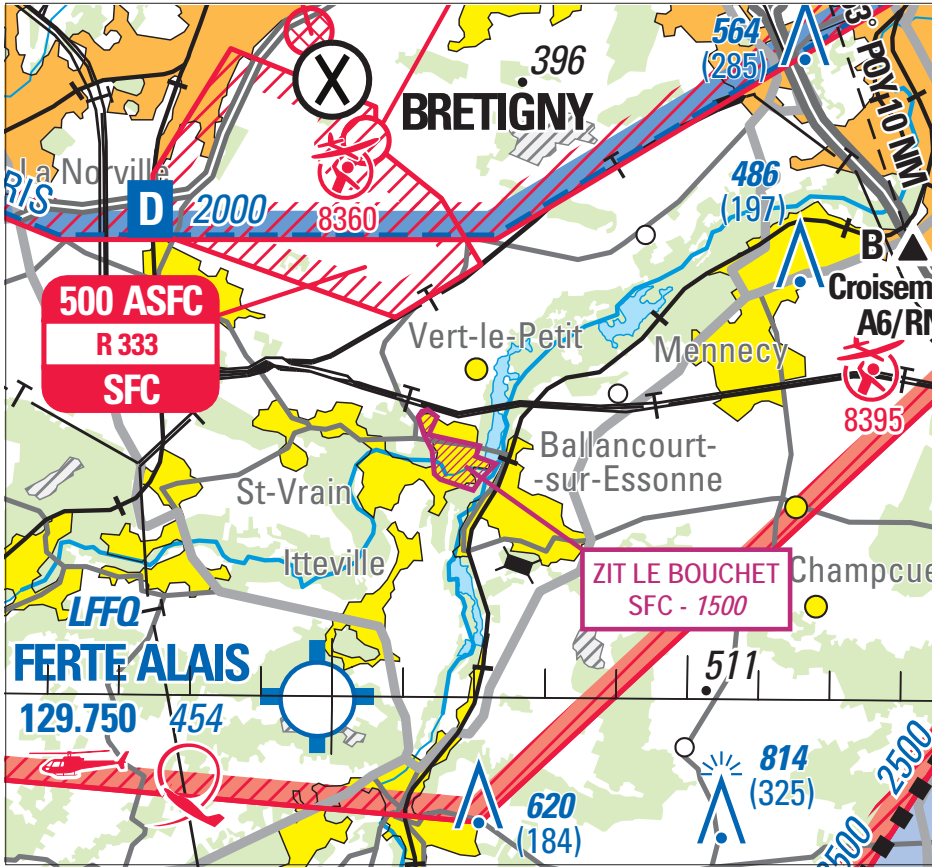


Subject : Creation of a Temporary Prohibited Area (ZIT) Le Bouchet in Paris FIR (LFFF)

With effect : From 21 November 2019 to 25 March 2020



From 1 : 250 000 « Région Parisienne » SIA map 2019 2nd edition

ACTIVITY
Low altitude flying prohibited over specific Defence installations.

DATES AND TIMES OF ACTIVITY
H24

STATUS
Temporary Prohibited Area (ZIT) replacing the portions of airspace with which it overlaps.

ENTRY CONDITIONS
GAT/OAT : entry prohibited H24, including for remotely piloted ACFT; entry is possible for :
<ul style="list-style-type: none"> ACFT conducting assistance, rescue or public safety missions when the avoidance is not compatible with these missions ; ACFT with authorization from the (Le Bouchet) facility manager (Defense ACFT, State drones, drones).

SERVICES PROVIDED
Flight information and alert

LATERAL AND VERTICAL LIMITS

Lateral limits

- 48°32'20" N - 002°22'02" E
- 48°32'14" N - 002°21'59" E
- 48°32'10" N - 002°22'16" E
- 48°32'01" N - 002°22'03" E
- 48°31'55" N - 002°21'57" E
- 48°32'01" N - 002°21'29" E
- 48°32'04" N - 002°21'24" E
- 48°32'17" N - 002°21'22" E
- 48°32'26" N - 002°21'15" E
- 48°32'36" N - 002°21'10" E
- 48°32'39" N - 002°21'13" E
- 48°32'40" N - 002°21'18" E
- 48°32'36" N - 002°21'26" E
- 48°32'26" N - 002°21'19" E
- 48°32'20" N - 002°22'02" E

Vertical limits

SFC / 1500FT AMSL