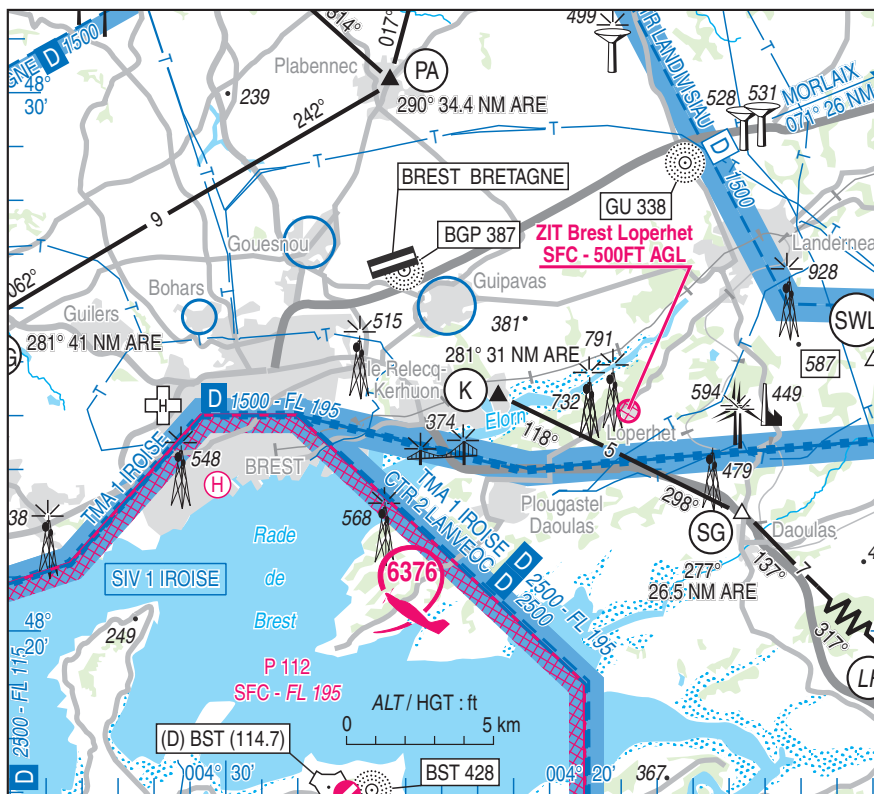


Subject : Creation of Temporary Prohibited Areas (ZIT) in Brest FIR LFRR

With effect : From 07 NOV 2019 to 06 MAY 2020

Location: FIR : Brest LFRR - AD : Landivisiau LFRJ, Lorient Lann Bihoué LFRH – out of AD : Brest Loperhet

1. ZIT BREST LOPERHET



From VAC AD 2 LFRB APP 01 WEF 31 JAN 2019

ACTIVITY
Defense facilities prohibited for low altitude flying
DATES AND TIMES OF ACTIVITY
H24
STATUS
Tempo Prohibited Area (ZIT) replacing the portions of Particular airspace with which it overlaps.
SERVICES PROVIDED
Information and alerting
ENTRY CONDITIONS
GAT/OAT : entry prohibited H24, including for drones; entry is possible for :
♦ ACFT conducting assistance, rescue or public safety missions when their mission is not compatible with the ZIT avoidance ;
♦ Defense ACFT, including State drones.

LATERAL AND VERTICAL LIMITS

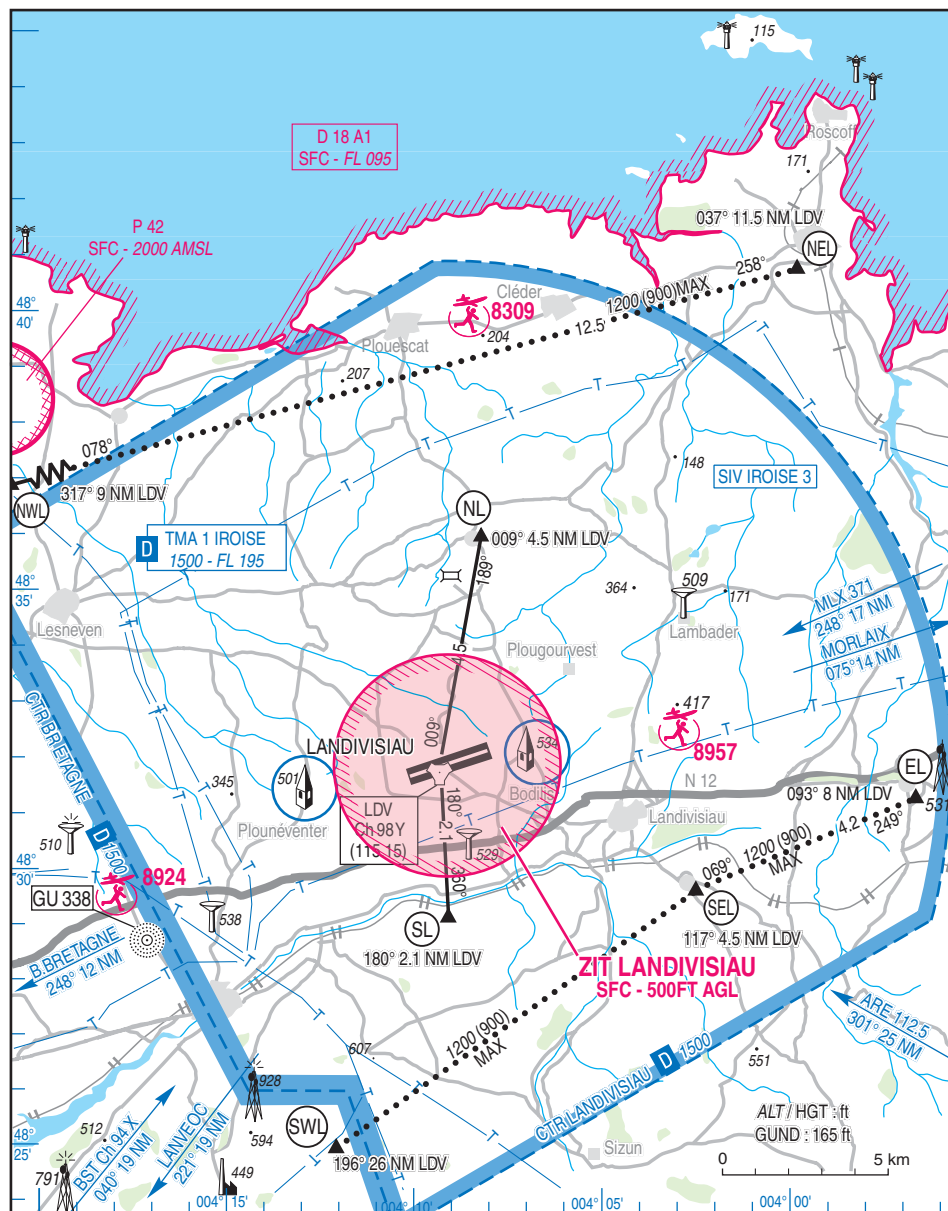
Lateral limits :
circle radius 0.2 Nm (370 metres) centred on : 48°24'05"N - 004°18'51"W

Vertical limits :
SFC / 500ft AGL

MANAGING AUTHORITY

NIL

2. ZIT LANDIVISIAU



Excerpt from Landivisiau DIA VAC « AD 2 LFRJ APP 01 » WEF 28 MAR 2019

ACTIVITY
Low altitude flying prohibited over specific Defence installations.

DATES AND TIMES OF ACTIVITY
H24

MANAGING AUTHORITY
LANDI TWR

ENTRY CONDITIONS
GAT/OAT : entry prohibited, including for remotely piloted ACFT; entry is possible for:
- ACFT conducting assistance, rescue or public safety missions, when their mission is not compatible with the avoidance of the ZIT;
- Defence ACFT, including State remotely piloted ACFT;
- ACFT departing from or going to Landivisiau AD with authorization from the managing authority;
- aeronautical activities covered by protocol with the managing authority, which remain available

STATUS
Tempo Prohibited Area (ZIT) coexisting with the airspace with which it overlaps.

SERVICES PROVIDED
ATS are provided in accordance with the status of the airspace with which ZIT overlaps.

LATERAL AND VERTICAL LIMITS

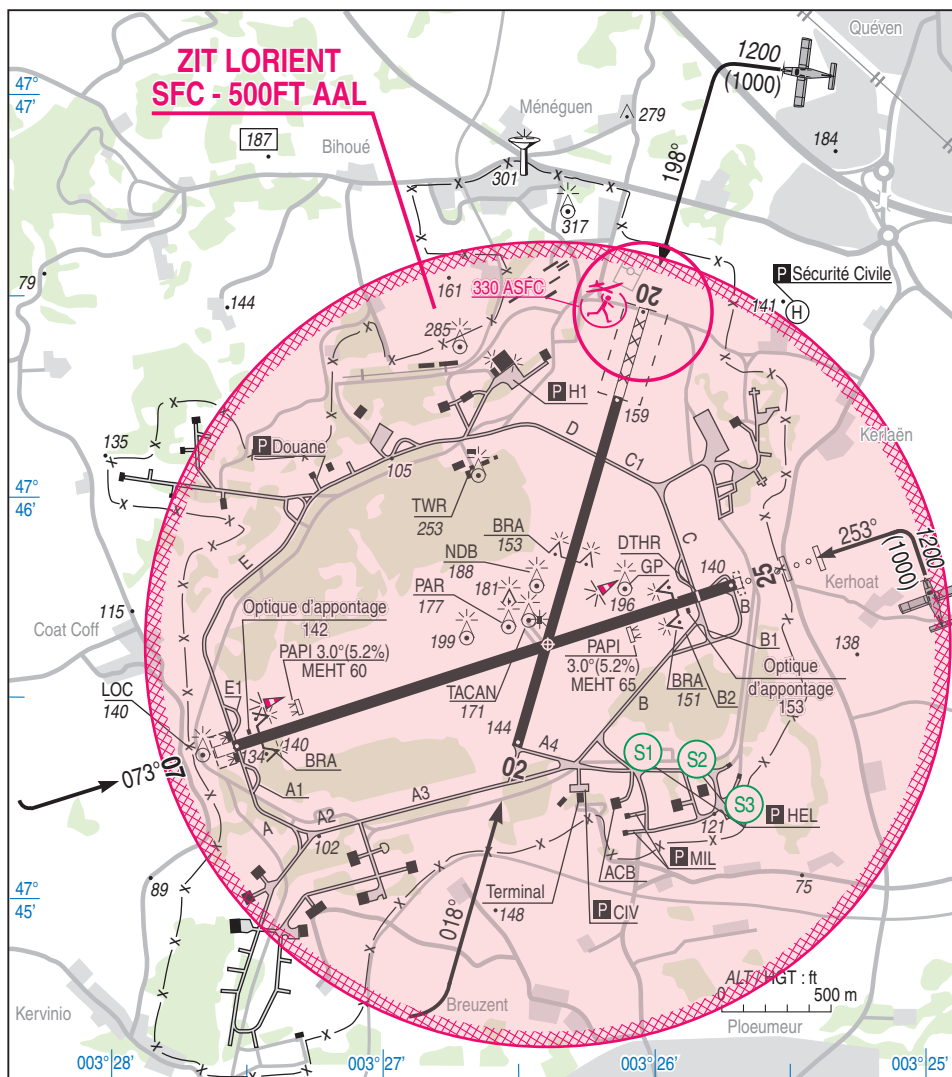
Lateral limits

Circle radius 2 Nm centred at : 48°31'49"N - 004°09'06"W (LFRJ ARP)

Vertical limits

SFC / 500FT AGL

3. ZIT LORIENT



Excerpt from DIA VAC chart « AD 2 LFRH ATT 01 » WEF 14 SEP 2017

ACTIVITY

Low altitude flying prohibited over specific Defence installations.

DATES AND TIMES OF ACTIVITY

H24

MANAGING AUTHORITY

Lorient TWR

STATUS

Temporary Prohibited Area (ZIT) coexisting with the airspace with which it overlaps.

ENTRY CONDITIONS

GAT/OAT : entry prohibited, including for remotely piloted ACFT; entry is possible for the following ACFT :

- ACFT conducting assistance, rescue or public safety missions, when their mission is not compatible with the ZIT avoidance,
- Defence ACFT, including State remotely piloted ACFT,
- outbound and inbound ACFT at Lorient Lann-Bihoué with prior authorization from managing authority or ATC clearance,
- aeronautical activities under protocol with managing authority remain available.

SERVICES PROVIDED

The services are provided in accordance with the status of the airspace with which this ZIT overlaps.

LATERAL AND VERTICAL LIMITS

Circle radius 1 NM centred at 47°45'38"N, 003°26'24"W (Lorient Lann Bihoué ARP)
SFC / 500 FT AAL