



Subject : Restrictions of use, and new infrastructure and lighting at Figari Sud Corse AD LFKF following renovation work on RWY 05/23

With effect : From 10 October 2019 to 01 January 2020

This AIP SUP supersedes AIP SUP 144/19 and the associated NOTAMs (WEF 10 OCT 2019).

1) Changes on aerodrome equipment and navigation aids :

- RWY 05 approach lighting with 5 lights over a distance of 300 metres available.
- Modification of RWY 05 PAPI angle : 3.5 degrees (6.1 %) / MEHT : 51 ft / displacement : 5° right.
- RWY 23 PAPI : 3.5 degrees (6.1%) / MEHT 51ft / displacement 1.5° left : creation in progress. Entry into service by NOTAM.
- Creation of a RWY starter extension for RWY 05, for take off only (see APPENDIX 1).
- Modification of turn around at THR 05 (see APPENDIX 1)
- Creation of 2 intermediate turn around pads (see APPENDIX 1).
- Creation of a displaced threshold 05 (DTHR 05, see APPENDIX 1) :
coordinates : 41°29'42.27" N / 009°05'11.56" E - ALT : 41 ft
- THR 05 :
coordinates : 41°29'40.95" N / 009°05'09.65" E - ALT : 40 ft
- THR 23 :
coordinates : 41°30'35.24" N / 009°06'28.56" E - ALT : 85 ft

This information will be included in AIP on AIRAC AMDT 01/20 WEF 02 JAN 2020.

2) Consequences on AD operations and procedures :

- Aerodrome ALT : 85 ft
- General aviation authorized after agreement from AD operator, e-mail : fsc.ppr@sudcorse.cci.fr
Helicopter restriction : see NOTAM.

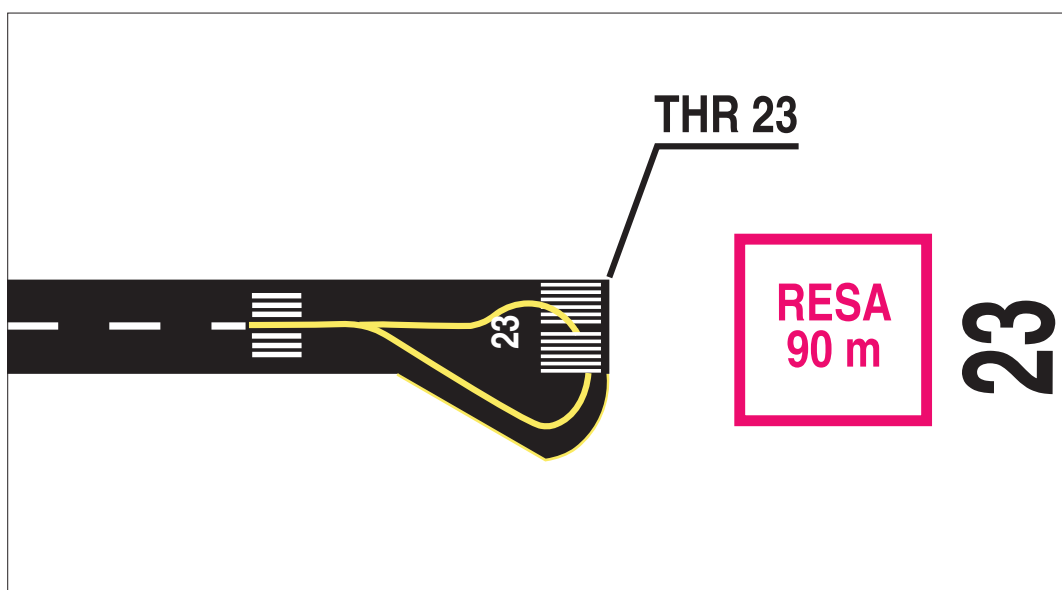
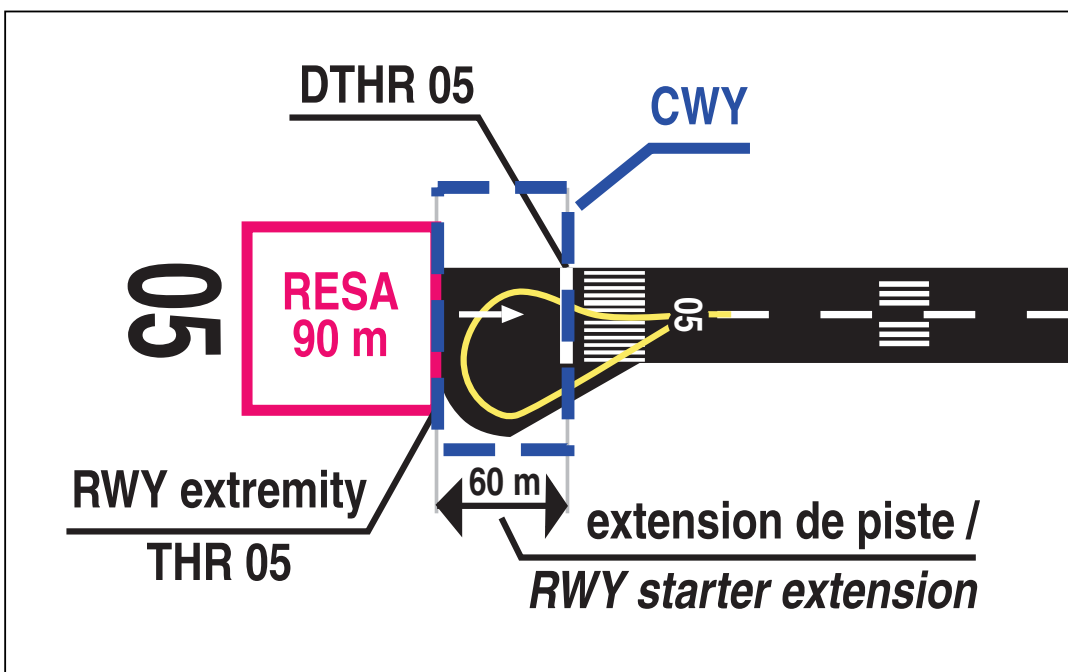
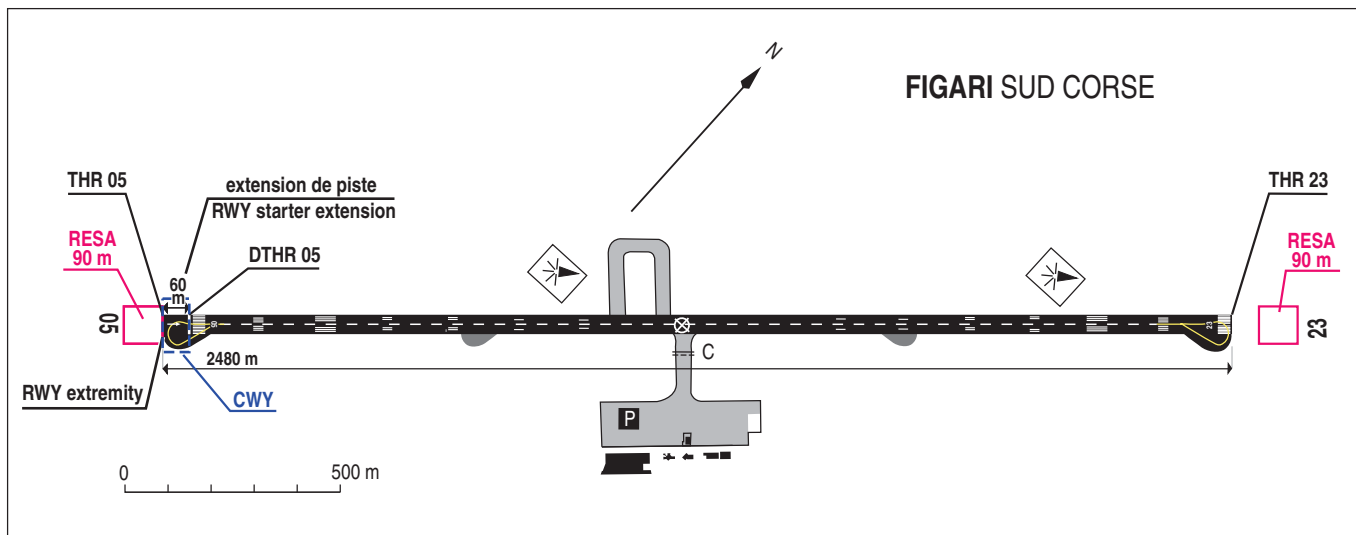
RWY 05 (new IAC charts VOR 05 and RNAV 05 with PAPI slope at 3.5° : see APPENDIXES 2 and 3)

	After the works
QFU	05
Critical ACFT reference code	4C
Operation categorie(s)	Daytime VFR GNSS and VOR approaches
Special aerodrome equipment	Turn around pad, PAPI
Special conditions of use / restrictions	Take off with RVR >= 400 m
RWY length x width	2480 x 45 m
RWY strip length x width	2600 x 280 m
RESA length x width	90 x 90 m
Declared distances	
TORA	2480 m
TODA	2480 m
ASDA	2480 m
LDA	2420 m

RWY 23 (new IAC charts ILS and RNAV, see APPENDIXES 4 and 5) :

	After the works
QFU	23
Critical ACFT reference code	4C
Operation categorie(s)	Daytime VFR ILS (RWY 23) LNAV GNSS APP available LPV GNSS APP suspended
Special aerodrome equipment	Turn around pad, PAPI (see NOTAM)
Special conditions of use / restrictions	CAT I approach with RVR > 1200 m Take off with RVR >= 400 m
RWY length x width	2480 x 45 m
RWY strip length x width	2540 x 280 m
RESA length x width	90 x 90 m
Declared distances	
TORA	2420 m
TODA	2480 m
ASDA	2420 m
LDA	2420 m

ANNEXE 1 / APPENDIX 1 : Nouvelles infrastructures / New infrastructures



APPROCHE AUX INSTRUMENTS

FIGARI SUD CORSE

Instrument approach

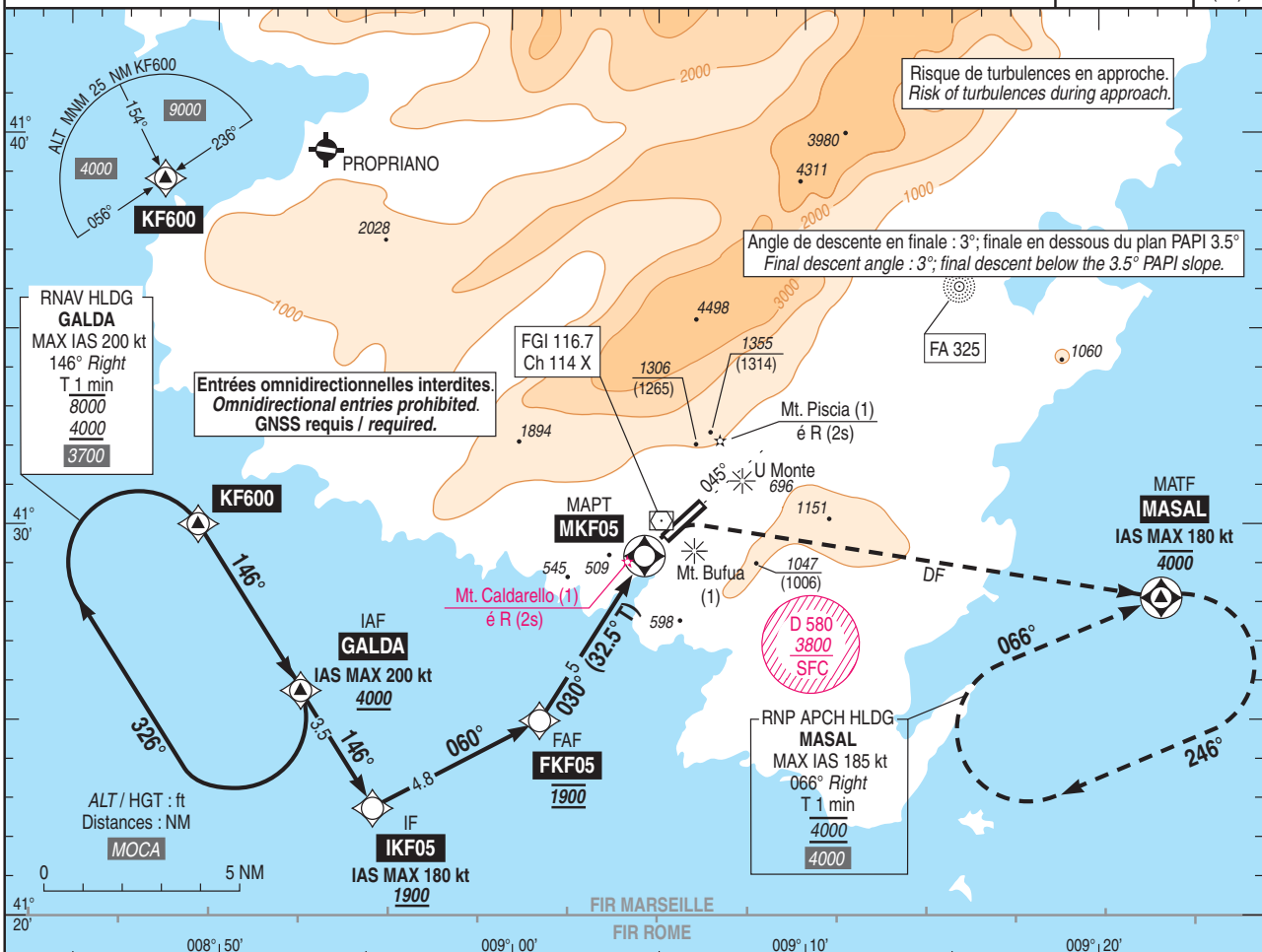
CAT A B C

RNAV (GNSS) RWY 05

ALT AD : 85, DTHR : 41 (2 hPa)

ATIS FIGARI : 118.730
APP : AJACCIO Approche / Approach : 121.050
TWR : FIGARI Tour / Tower : 120.300

RNP APCH	VAR 2°E (15)
----------	--------------------



TA : 5000	IF IKF05	FAF FKF05	MAPT MKF05	MASAL
	1300 (1259)	1900 (1859)	060°	030° (32.5° T)
			030° (32.5° T)	066°
			5.2%	066°
			PAPI 3.5° - 6.1%	066°
			MDA	066°
			DF	066°

API : Au MAPT, tourner à droite IAS MAX 180 kt direct vers MASAL, en montée vers 4000 (3959) puis poursuivre pour intégrer l'attente MASAL à 4000 (3959).
Ou suivre les instructions du contrôleur.
Monter à 2000 (1959) avant d'accélérer en palier.
Missed APCH : At MAPT, turn right IAS MAX 180 kt direct to MASAL, climbing up to 4000 (3959) then continue to enter holding pattern MASAL at 4000 (3959).
Or proceed according to ATC instructions.
Climb up to 2000 (1959) prior to level acceleration.

→ MKF05 (NM) 9.8 5.0 0 0.7
→ DTHR 05 (NM) 10.5 5.7 0.7 0

MNM AD : distances verticales en pieds, RVR et VIS en mètres / vertical distances in ft, RVR and VIS in metres. REF HGT : ALT DTHR

CAT	LNAV (1)			MVL / Circling (2) HJ seulement Daytime only		DIST MKF05 (NM)	5	4	3
	MDA (H)	RVR	OCH	MDA (H)	VIS				
A				1360 (1320)					
B	1270 (1230)	5000	1222	1470 (1430)	5000				
C				1770 (1730)					

Observations / Remarks : Mt CALDARELLO (388 ft) Franchissement assuré par PAPI / Clearing provided by PAPI.
Panne de guidage GNSS durant l'approche / Loss of GNSS guidance during approach : voir / see AIP ENR 1.5.
(1) Procédure inutilisable de nuit si indisponibilité des feux suivants : feux à éclats séquentiels, feux d'identification de piste 05 et Piscia, Bufua, Caldareello selon conditions / Procedure cannot be used at night if the following lights are not operating : flashing sequential lights, RWY 05 identification lights and Piscia, Bufua, Caldareello according to conditions : Voir/see AIP AD 2 LFKF.23.
(2) MVL interdite au Nord-Ouest de la piste / Circling prohibited North-West of runway.

FAF - MAPT	5.0 NM	70 kt 4 min 17	85 kt 3 min 32	100 kt 3 min 00	115 kt 2 min 37	130 kt 2 min 18	145 kt 2 min 04	160 kt 1 min 53
VSP (ft/min)		370	450	530	610	690	770	850

APPROCHE AUX INSTRUMENTS

FIGARI SUD CORSE

Instrument approach

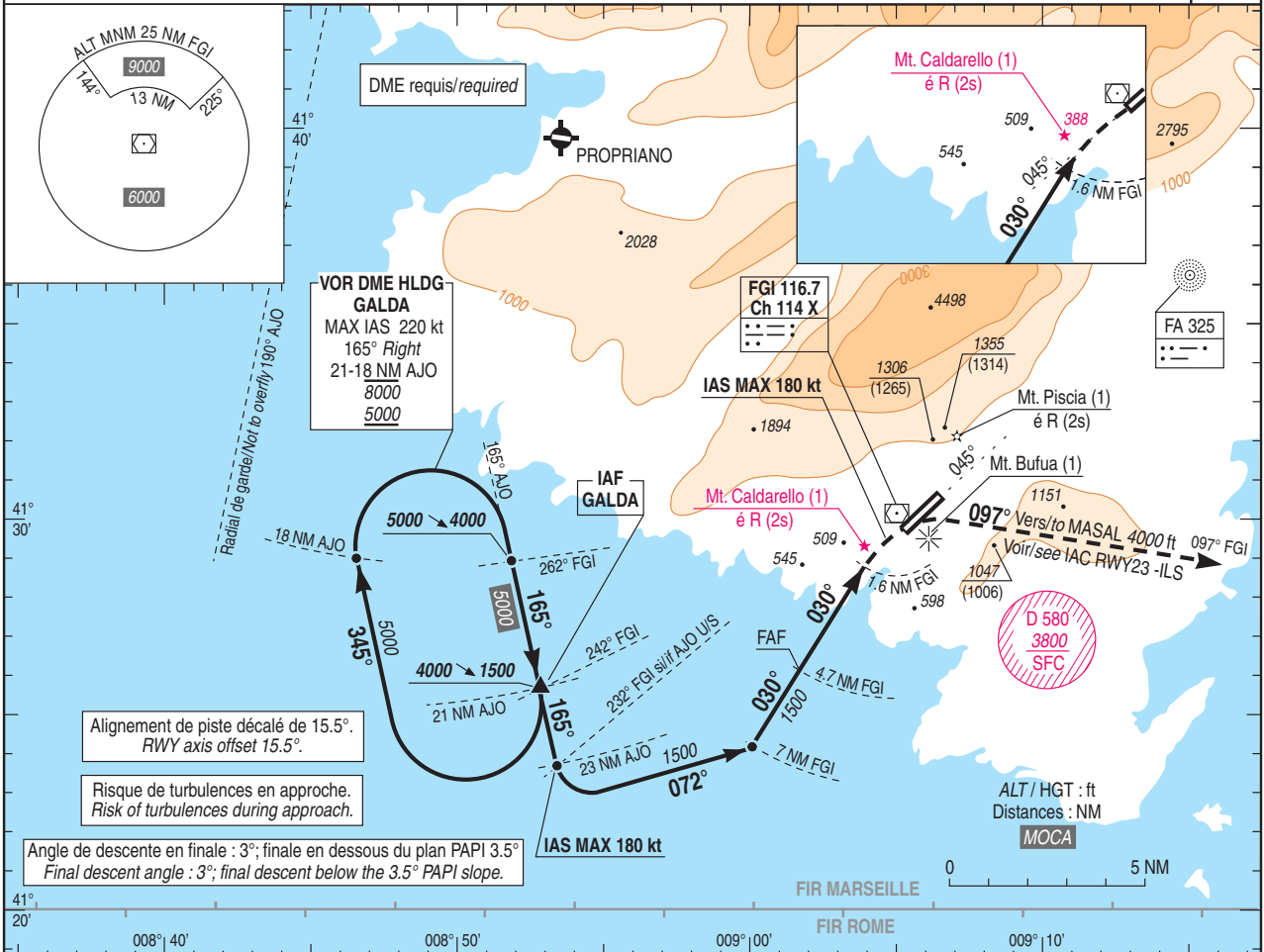
CAT A B C

ALT AD : 85, DTHR : 41 (2 hPa)

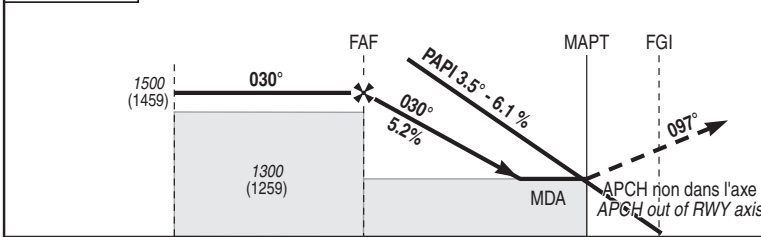
VOR RWY 05

ATIS FIGARI : 118.730
APP : AJACCIO Approche / Approach 121.050
TWR : FIGARI Tour / Tower 120.300 (voir / see ADC 01)

VAR
2°E
(15)



TA : 5000



API : Au MAPT, tourner à **droite** pour intercepter et suivre le RDL 097° FGI (RM 097°) en montée vers 4000 (3959). A 13 NM DME FGI, intégrer l'attente MASAL à 4000 (3959). Monter à 2000 (1959) avant d'accélérer en palier.

Missed APCH : At MAPT turn **right** to intercept and follow RDL 097° FGI (MAG 097°) climbing up to 4000 (3959). At 13 NM DME FGI, join holding pattern MASAL at 4000 (3959). Climb up to 2000 (1959) prior to level acceleration.

MNM AD : distances verticales en pieds, RVR et VIS en mètres / vertical distances in feet, RVR and VIS in metres. REF HGT : ALT DTHR

CAT	VOR (1)			MVL / Circling (2) HJ seulement/only	
	MDA (H)	RVR	OCH	MDA (H)	VIS
A	950 (910)	4100	903	1430 (1390)	4100
B	960 (920)		911	1560 (1520)	
C	970 (930)		922	1800 (1760)	

DME FGI		
NM	4	3
ALT	1280	960
(HGT)	(1239)	(919)

Observations / Remarks : Mt CALDARELLO (388 ft) Franchissement assuré par PAPI / Overflying provided by PAPI.
(1) Procédure inutilisable de nuit si indisponibilité des feux suivants : feux à éclats séquentiels, feux d'identification de piste 05 et Piscia, Bufua, Caldarello selon conditions / Procedure cannot be used at night if the following lights are not operating : flashing sequential lights, RWY 05 identification lights and Piscia, Bufua, Caldarello according to conditions : Voir / See AIP AD 2 LFKF.23.
(2) MVL interdite au Nord-Ouest de la piste / Circling prohibited NW of runway.

FAF - MAPT	3.1 NM	70 kt	85 kt	100 kt	115 kt	130 kt	145 kt	160 kt
VSP (ft/min)		370	450	530	610	690	770	850

AIP SUP
FRANCE

ANNEXE 4 / APPENDIX 4

AD 2 LFKF IAC RWY23 - ILS

APPROCHE AUX INSTRUMENTS

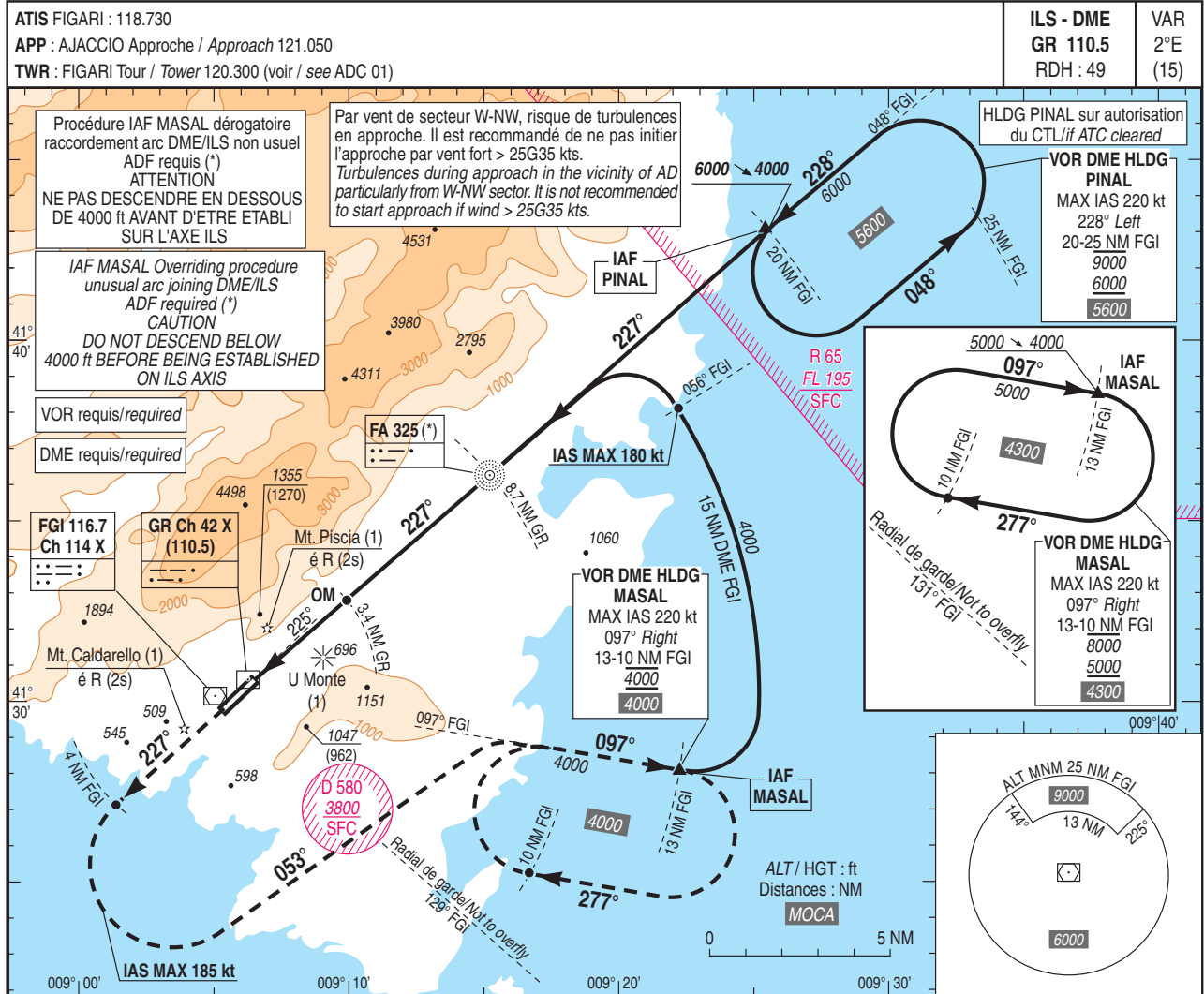
FIGARI SUD CORSE

Instrument approach

CAT A B C

ALT AD : 85, THR : 85 (3 hPa)

ILS RWY 23



TA : 5000

API : Monter dans l'axe. A 4 NM DME FGI tourner à gauche vers RM 053° en montée vers 4000 (3915) pour intercepter et suivre le RDL 097° FGI (RM 097°).
 A 13 NM DME FGI, intégrer l'attente MASAL à 4000 (3915). Monter à 2000 (1915) avant d'accélérer en palier.
 Missed APCH : Climb straight ahead. At 4 NM FGI DME turn left to MAG 053° climbing up to 4000 (3915) to intercept and follow FGI RDL 097° (MAG 097°).
 At 13 NM FGI DME, join holding pattern MASAL at 4000 (3915). Climb to 2000 (1915) prior to level acceleration.

APCH non dans l'axe (décalage 1,6°)
 APCH out of RWY axis (1.6° offset)

THR ← (NM)	3.3	8.6
DME GR ← (NM)	3.4	8.7
DME FGI ← (NM)	4.4	9.7

MNM AD : distances verticales en pieds, RVR et VIS en mètres / vertical distances in feet, RVR and VIS in metres. REF HGT : ALT THR

CAT	ILS (1)			MVL / Circling (2) HJ seulement/only	
	DA (H)	RVR	OCH	MDA (H)	VIS
A	340 (250)	1300	250	1360 (1280)	1500
B				1470 (1380)	1600
C				1770 (1680)	2400

Observations / Remarks :
 Base OCH ILS : NIL
 (1) Procédure inutilisable de nuit si indisponibilité des feux : U Monte, Piscia, Caldarello selon conditions (voir AD 2 LFKF.23).
 Procedure cannot be used at night if following lights are not operating : U Monte, Piscia, Caldarello according to conditions (see AD 2 LFKF.23).
 (2) MVL interdite au Nord-Ouest de la piste. Circuit AD RWY 05 : Droite / Circling prohibited NW of RWY. Right hand circuit RWY 05.

OM - THR	3.3 NM	70 kt 2 min 50	85 kt 2 min 20	100 kt 1 min 59	115 kt 1 min 43	130 kt 1 min 31	145 kt 1 min 22	160 kt 1 min 14
VSP (ft/min)		430	530	620	710	800	900	990

APPROCHE AUX INSTRUMENTS

FIGARI SUD CORSE

Instrument approach

CAT A B C

ALT AD : 85 THR : 85 (3 hPa)

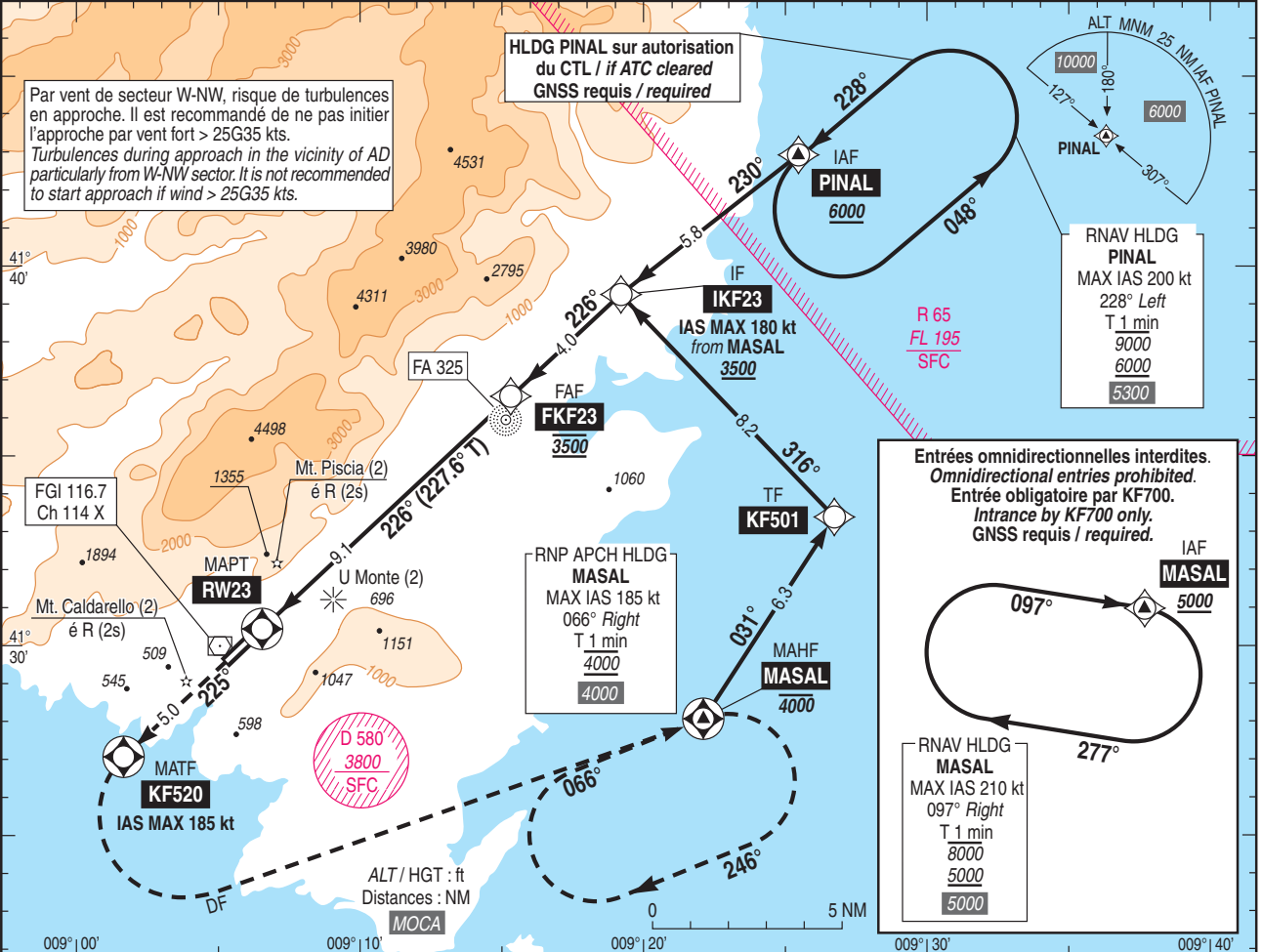
RNAV (GNSS) RWY 23

ATIS FIGARI : 118.730

APP : AJACCIO Approche/Approach : 121.050

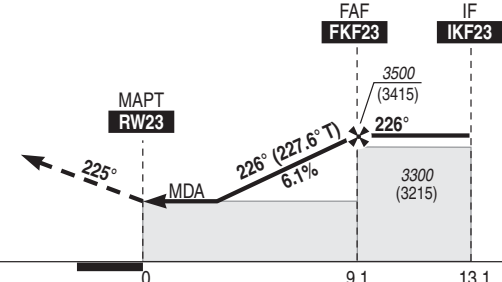
TWR : FIGARI Tour/Tower : 120.300

RNP APCH
VAR
2°E
(15)



TA : 5000

API : Monter jusqu'à **KF520**.
 A **KF520**, tourner à gauche direct vers **MASAL IAS MAX 185 kt**, en montée vers **4000 (3915)**, pour intégrer l'attente **MASAL**.
 Ou suivre instructions du CTL.
 Monter à **2000 (1915)** avant d'accélérer en palier.
 Missed APCH : Climb up to **KF520**.
 At **KF520**, turn left direct to **MASAL IAS MAX 185 kt**, climbing up to **4000 (3915)**, to enter holding pattern **MASAL**.
 Or proceed according to ATC instructions.
 Climb up to **2000 (1915)** prior to level acceleration.



THR 23 ← (NM)

MNM AD : distances verticales en pieds, RVR et VIS en mètres / vertical distances in feet, RVR and VIS in metres.

REF HGT : ALT THR

CAT	LPV			LNAV			MVL / Circling (1) HJ seulement / Daytime only		DIST RWY23 (NM)							
	DA (H)	RVR	OCH	MDA (H)	RVR	OCH	MDA (H)	VIS	9	8	7	6	5	4	3	
A	Procédure LPV suspendue / LPV procedure not available			1370 (1290)	5000	1281	1570 (1480)	5000	ALT	3470	3100	2730	2360	1990	1620	MDA
B									(HGT)	(3385)	(3015)	(2645)	(2275)	(1905)	(1535)	(-)
C																

Observations / Remarks : (1) MVL interdite au Nord-ouest de la piste. Circuit AD RWY 05 : Droite / Circling prohibited NW of RWY. Right hand circuit RWY 05.
 (2) Procédure inutilisable de nuit si indisponibilité des feux suivants : U Monte, Piscia, Caldarellu / Procedures cannot be used at night if the following lights are not operating : U Monte, Piscia, Caldarellu. Voir / See AD 2 LFKF.23
 Panne de guidage GNSS durant l'approche / GNSS guidance loss during approach : voir/see AIP ENR 1.5.

	FKF23 - RW23	9.1 NM	70 kt 7 min 47	85 kt 6 min 24	100 kt 5 min 27	115 kt 4 min 44	130 kt 4 min 11	145 kt 3 min 45	160 kt 3 min 24
VSP (ft/min)		430	530	620	710	800	900	990	