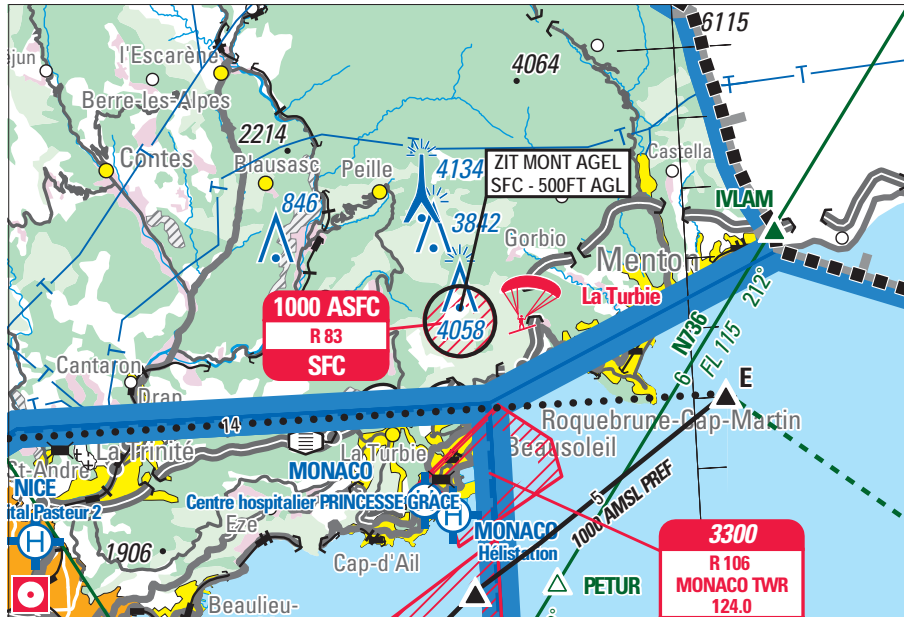


Subject : Creation of a Temporary Prohibited Area (ZIT) Mont Agel (FIR: Marseille LFMM)

With effect : From 08 August to 06 November 2019



From 1 / 250 000 « Nice Côte d'Azur » SIA map 2019 1st edition

ACTIVITY

Low altitude flying prohibited over specific Defence installations

DATES AND TIMES OF ACTIVITY

H24

MANAGING AUTHORITY

NIL

ENTRY CONDITIONS

GAT/OAT : entry prohibited, including for remotely piloted ACFT;
entry is possible for :

- ACFT conducting assistance, rescue or public safety missions, when their mission is not compatible with the avoidance of the ZIT,
- Defence ACFT, including State remotely piloted ACFT.

STATUS

Temporary Prohibited Area (ZIT) replacing Restricted Area LF-R 83 Mont Agel

SERVICES PROVIDED

Flight information and alert

LATERAL AND VERTICAL LIMITS

ZIT MONT AGEL

Lateral limits

Circle radius 0.5 NM centred at 43°46'17"N-007°25'30"E

Vertical limits

SFC - 500FT AGL