

 Service de l'Information Aéronautique 	 Liberté • Égalité • Fraternité RÉPUBLIQUE FRANÇAISE Phone : +33(0) 5 57 92 57 97 or 57 95 e-mail : sia.supaip@aviation-civile.gouv.fr Internet : www.sia.aviation-civile.gouv.fr	AIRAC AIP SUP 149/19 AIRAC date : 18 JUL Publication date : 06 JUN
--	---	---

Subject : Restrictions of use of Paris Orly AD LFPO, closure of RWY 08/26 and RWY 02/20, closure of taxiways, tempo closure of holding area W37 and ACFT stand F04, due to works to renovate RWY 08/26 and create a new taxiway

With effect : From 28 July 2019, 2130 to 02 December 2019, 0500 UTC

Introduction :

Paris-Orly airport is carrying out renovation and compliance work on their equipment, including RWY 08/26, and building a new taxiway (W32).

These works require the closure of RWY 08/26 and 02/20 and their associated taxiways and closure of aircraft stand F04. The works will be carried out in four phases, the closures will depend on the work phases.

The 4 phases are described in this AIP SUP.

Phase 1 :

Unavailable infrastructures :

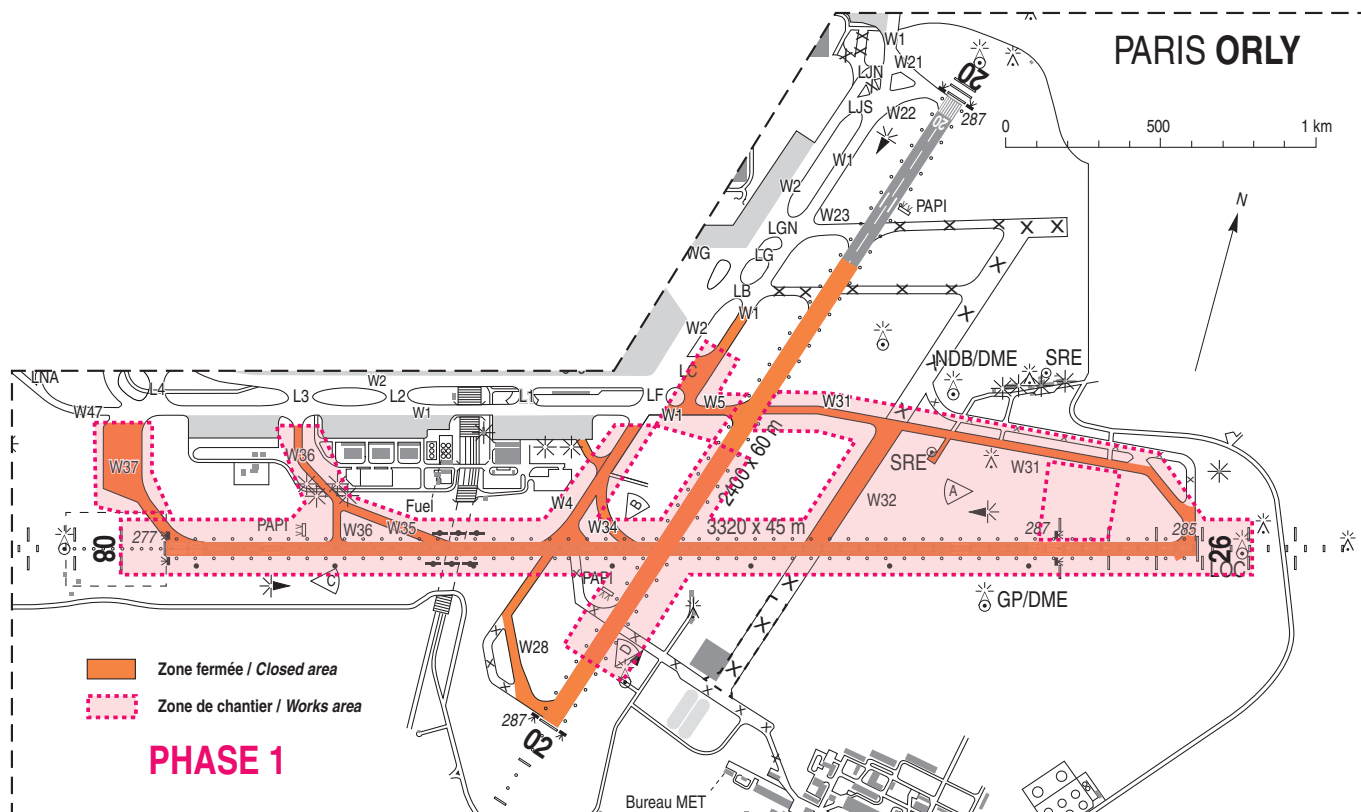
- Closure of RWY 02/20 except its Northern portion between TWY W21 and W23,
- Closure of RWY 08/26,
- Closure of the following TWY : W4, W5, W1 between LF and LB both excluded, W31, W32, W34, W35, W36, W37, W28 and LC,
- Tempo closure of ACFT stand F04 and its access TWY,
- Closure of holding area W37.

Operating restrictions :

- Landing and take off from RWY 06/24 only,
- When RWY 06 is in use: pilots must be ready to depart before reaching holding area W47. Otherwise, inform ATC,
- the northern portion of RWY 02/20 between TWY W21 and W23 available for taxiing only,
- Risk of ACFT face to face on TWY W2 between LF and LB.

Reminder : **HIRO (High Intensity Runway Operations)** procedures are in force and active **H24 at Paris Only** airport. Pilots must make sure they occupy the RWY for the shortest amount of time possible, on arrival and departure.

The date and time of activation of phase 1 will be announced by NOTAM.



Phase 2 :

Unavailable infrastructures :

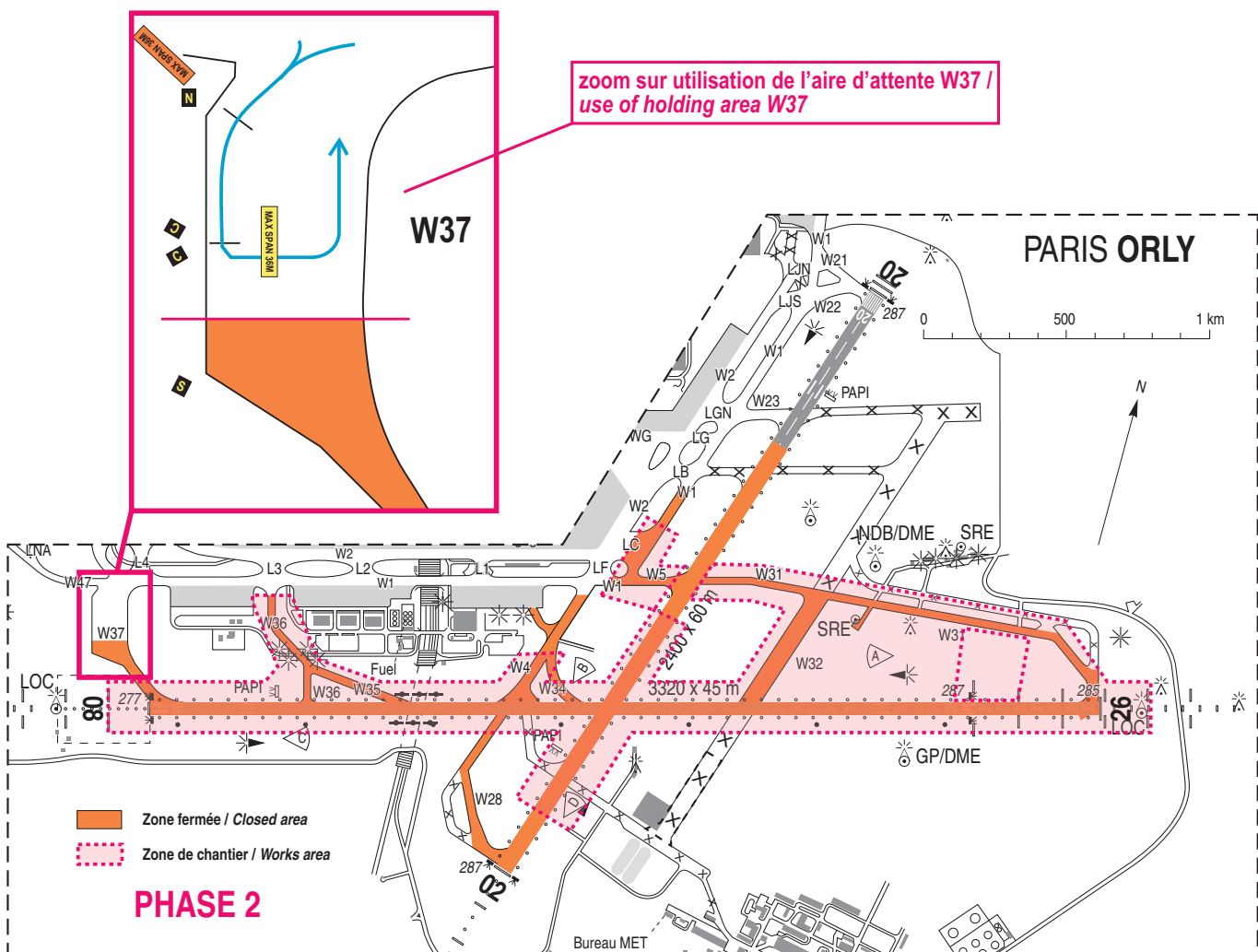
- Closure of RWY 02/20 except its Northern portion between TWY W21 and W23,
- Closure of RWY 08/26,
- Closure of the following TWY : W4, W5, W1 between LF and LB both excluded, W31, W32, W34, W35, W36, W28 and LC, and closure of part of W37,
- Tempo closure of ACFT stand F04 and its access TWY.

Operating restrictions :

- Landing and take off from RWY 06/24 only,
- When RWY 06 is in use for take-off : pilots must be ready to depart before reaching holding area W47. Otherwise, inform ATC,
- Holding area W37 only reserved for ACFT with a wingspan of 36 m or less : entry must be made facing South on holding area W37 and exit facing North on TWY W37
- the northern portion of RWY 02/20 between TWY W21 and W23 available for taxiing only,

Reminder : **HIRO (High Intensity Runway Operations)** procedures are in force and active **H24 at Paris Orly airport**. Pilots must make sure they occupy the RWY for the shortest amount of time possible, on arrival and departure.

The date and time of activation of phase 2 will be announced by NOTAM.



Phase 3 : Re opening of RWY 02/20, ACFT stand F04 and TWY W1

Unavailable infrastructures :

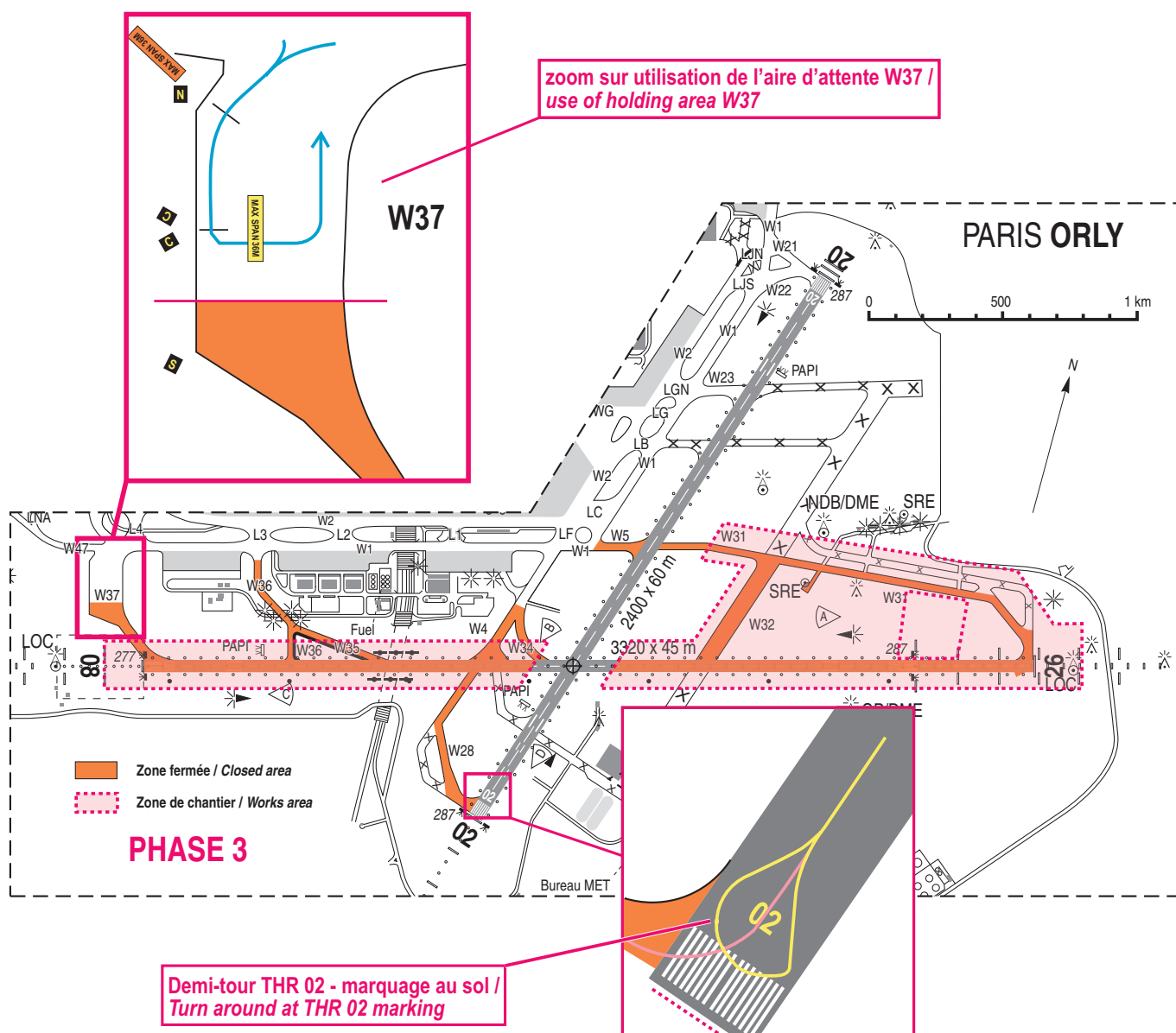
- Closure of RWY 08/26,
- Closure of the following TWY : W4 from the South of the TWY leading to Stand F04, W5, W31, W32, W34, W35, W36, W28, part of W37.

Operating restrictions :

- East configuration : landing and take off from RWY 06,
- West configuration :
 - Take off : RWY 24 for all ACFT types, RWY 20 for code C max (maximum wingspan : 36m),
 - Landing : RWY 24.
- Acceleration/stop RWY 20 : TWY W28 closed, but ACFT with a wingspan of 36 m or less can turn around at THR 02 after ATC clearance. There is a turn around marking at THR 02. If they can't turn around, a push back / pulling machine will be requested,
- Holding area W37 reserved for ACFT with a wingspan of 36 m or less only : entry must be made facing South on holding area W37 and exit facing North on TWY 37.

Reminder : HIRO (High Intensity Runway Operations) procedures are in force and active H24 at Paris Orly airport. Pilots must make sure they occupy the RWY for the shortest amount of time possible, on arrival and departure.

The date and time of activation of phase 3 will be announced by NOTAM.



Phase 4 :

Unavailable infrastructures :

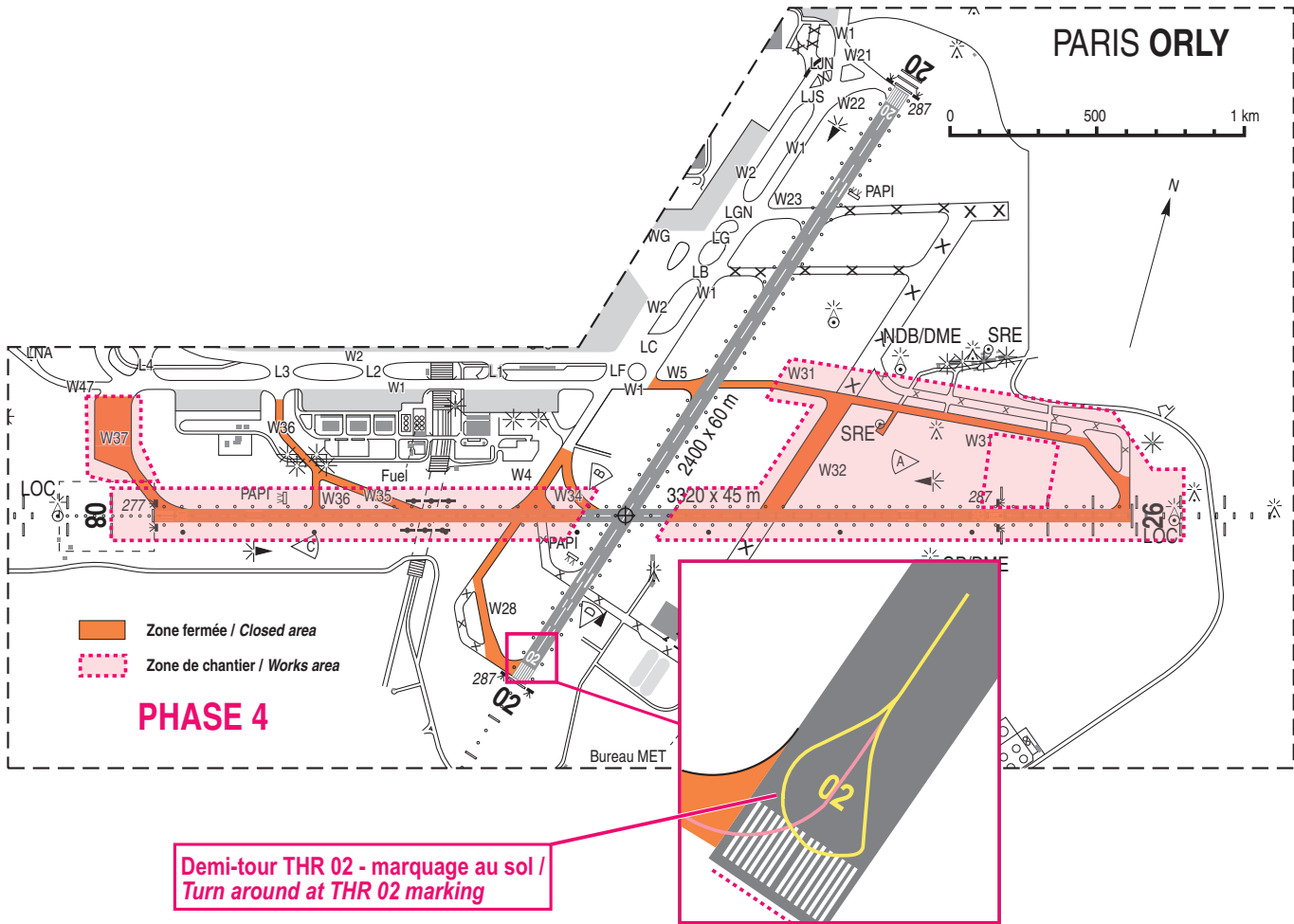
- Closure of holding area W37,
- Closure of RWY 08/26
- Closure of the following TWY : W4 from the South of the TWY leading to Stand F04, W5, W31, W32, W34, W35, W36, W37 and W28.

Operating restrictions :

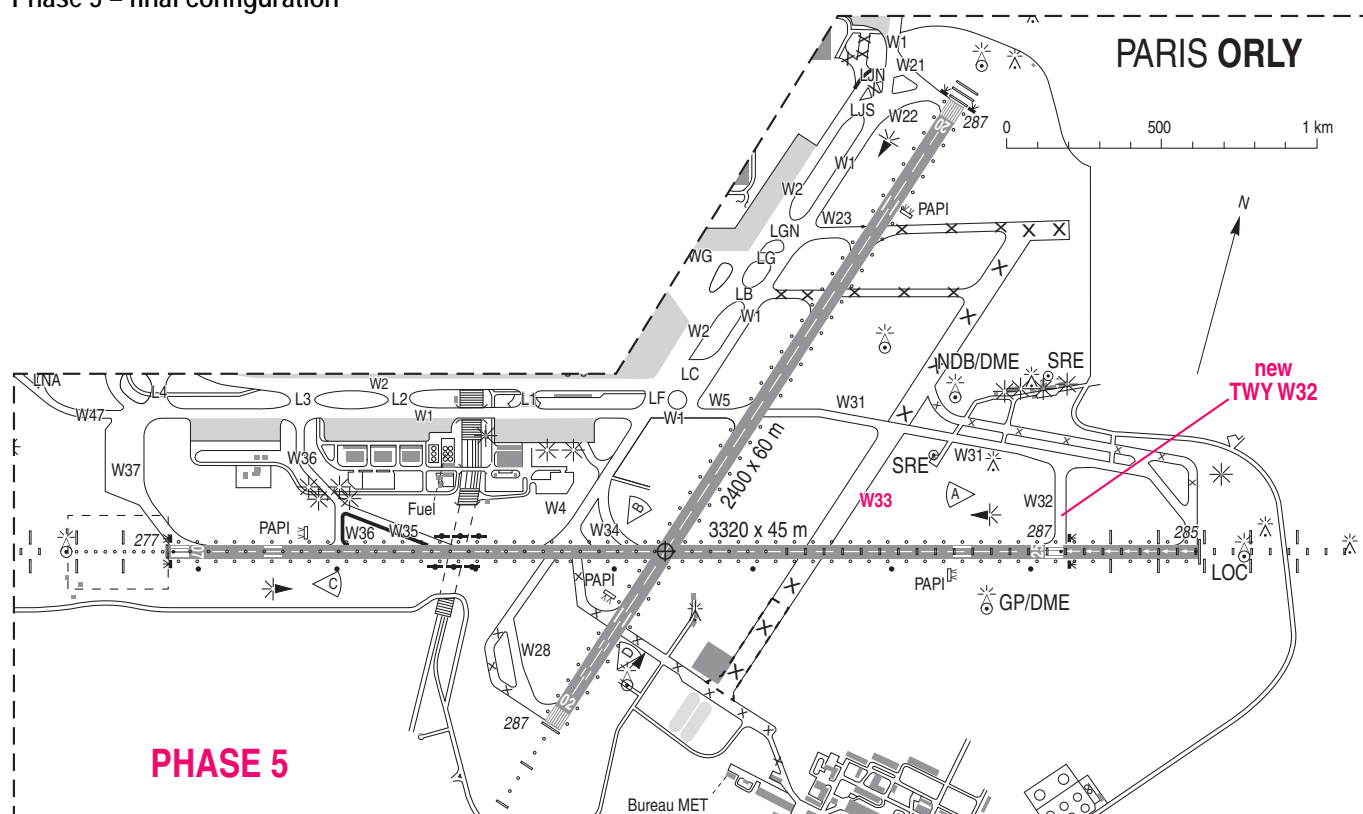
- East configuration : landing and take off from RWY 06,
- West configuration :
 - Take off : RWY 24 for all ACFT types, RWY 20 for code C max (maximum wingspan : 36m),
 - Landing : RWY 24.
- Acceleration/stop RWY 20 : TWY W28 closed, but ACFT with a wingspan of 36 m or less can turn around at THR 02 after ATC clearance. There is a turn around marking at THR 02. If they can't turn around, a push back / pulling machine will be requested.

Reminder : HIRO (High Intensity Runway Operations) procedures are in force and active H24 at Paris Orly airport. Pilots must make sure they occupy the RWY for the shortest amount of time possible, on arrival and departure.

The date and time of activation of phase 4 will be announced by NOTAM.



Phase 5 – final configuration



The date and time of activation of phase 4 will be announced by NOTAM.

This information will be included in AIP.