



Subject : New infrastructure and lighting, and restrictions of use of Figari Sud Corse AD LFKF following rehabilitation works on RWY 05/23

With effect : From 06 June to 10 October 2019

1) Changes on aerodrome equipment and navigation aids :

- RWY 05 approach lighting with 5 lights over a distance of 300 metres available.
- Modification of RWY 05 PAPI angle : 3.5 degrees (6.1 %) / MEHT : 51 ft / displacement : 5° right.
- RWY 23 PAPI : 3.5 degrees (6.1%) / MEHT 51ft / displacement 1.5° left : creation in progress. Entry into service by NOTAM.
- Creation of a RWY starter extension for RWY 05, for take off only (see APPENDIX 1).
- Modification of turn around at THR 05 (see APPENDIX 1)
- Creation of 2 intermediate turn around pads (see APPENDIX 1).
- ILS (23) : homologation in progress. Activation by NOTAM.
- THR 05 new coordinates :
41°29'42.32" N / 009°05'11.55" E (THR 23 coordinates not changed)

2) Restrictions on aerodrome infrastructures :

- FATO unavailable and helicopter stands H1, H2 and H3 unavailable (works); return to normal service will be activated by NOTAM.

3) Consequences on AD operations :

- Aerodrome available for general aviation ACFT upon authorization from the AD manager via e-mail : fsc.ppr@sudcorse.cci.fr
Restrictions for helicopters : see NOTAM
- During the FATO unavailability, arrival and departure procedures for authorized helicopters are flown on the RWY only with translation via TWY Charlie to the applicable stand
- Push back and taxiing from commercial apron may be delayed in case of helicopter traffic

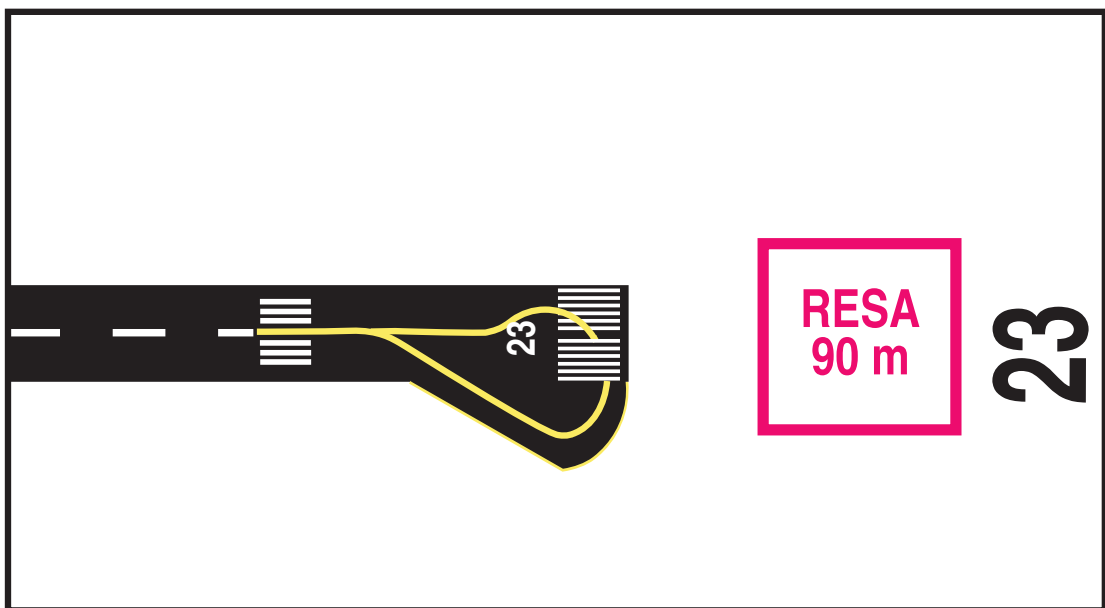
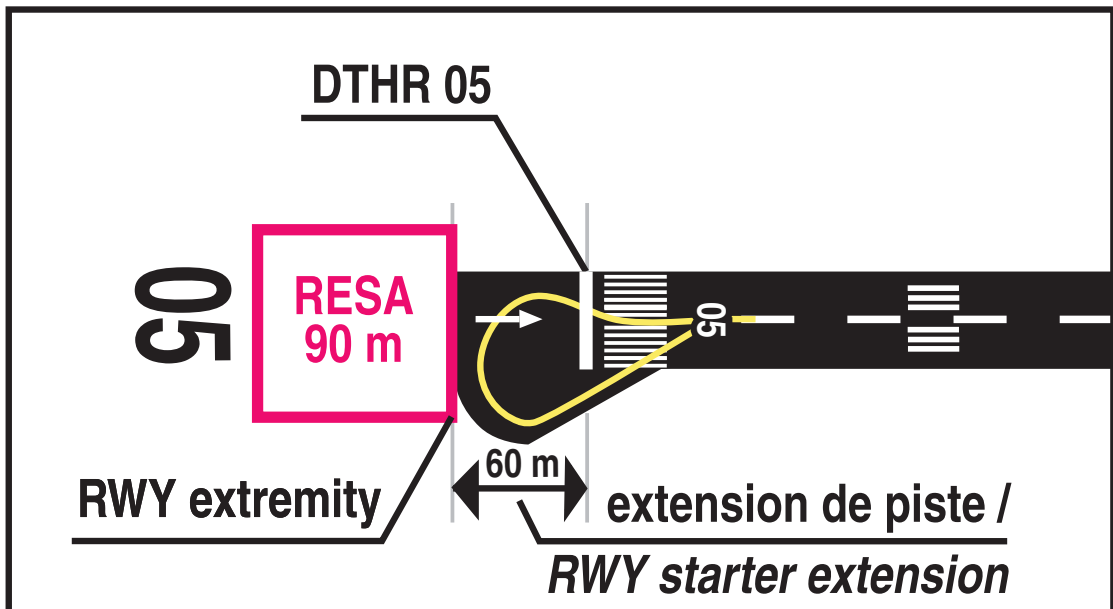
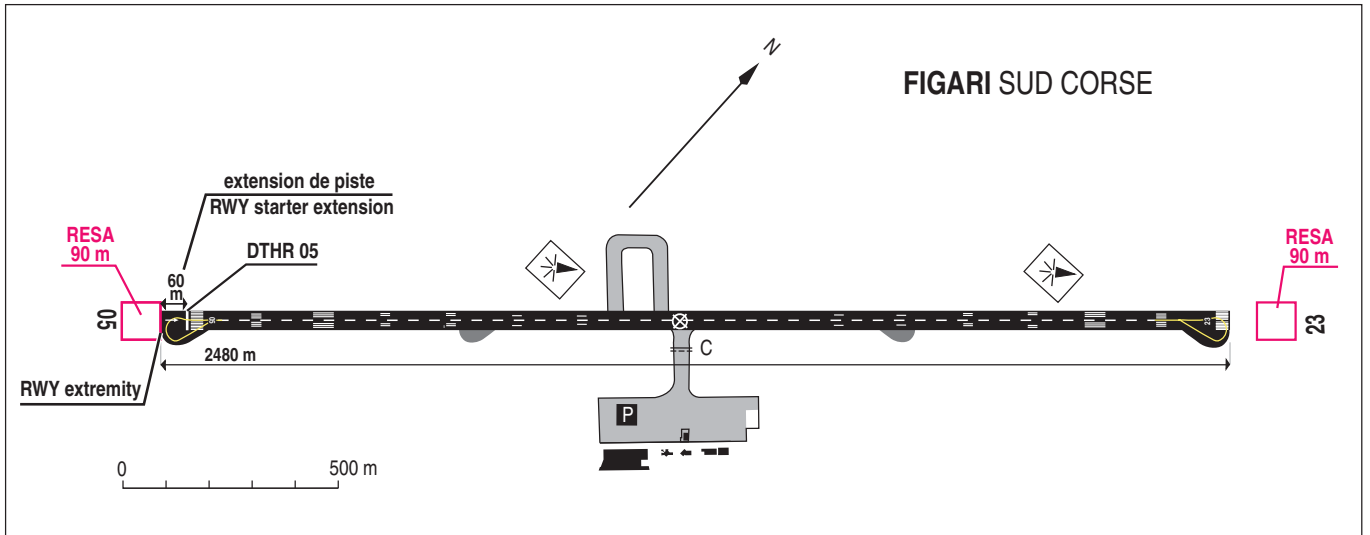
RWY 05 (new IAC charts VOR 05 and RNAV 05 with PAPI slope at 3.5° : see APPENDIXES 2 and 3)

	After the works
QFU	05
Critical ACFT reference code	4C
Operation categorie(s)	Daytime VFR GNSS and VOR approaches
Special aerodrome equipment	Turn around pad, PAPI
Special conditions of use / restrictions	Take off with RVR >= 400 m
RWY length x width	2420 x 45 m
RWY strip length x width	2540 x 280 m
RESA length x width	90 x 90 m
Declared distances	
TORA	2480 m
TODA	2480 m
ASDA	2480 m
LDA	2420 m

RWY 23 (new IAC charts ILS and RNAV with PAPI 23 at 3.5° will be published at a later date and available when entry into service of RWY 23 PAPI is activated by NOTAM) :

	After the works
QFU	23
Critical ACFT reference code	4C
Operation categorie(s)	Daytime VFR ILS (RWY 23) (see NOTAM) GNSS APP
Special aerodrome equipment	Turn around pad, PAPI (see NOTAM)
Special conditions of use / restrictions	CAT I approach with RVR > 1200 m Take off with RVR >= 400 m
RWY length x width	2420 x 45 m
RWY strip length x width	2540 x 280 m
RESA length x width	90 x 90 m
Declared distances	
TORA	2420 m
TODA	2480 m
ASDA	2420 m
LDA	2420 m

ANNEXE 1 / APPENDIX 1 : Nouvelles infrastructures / New infrastructures



APPROCHE AUX INSTRUMENTS

FIGARI SUD CORSE

Instrument approach

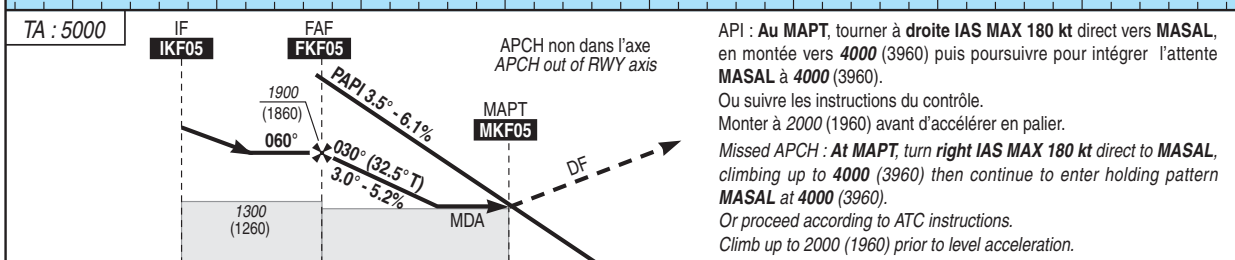
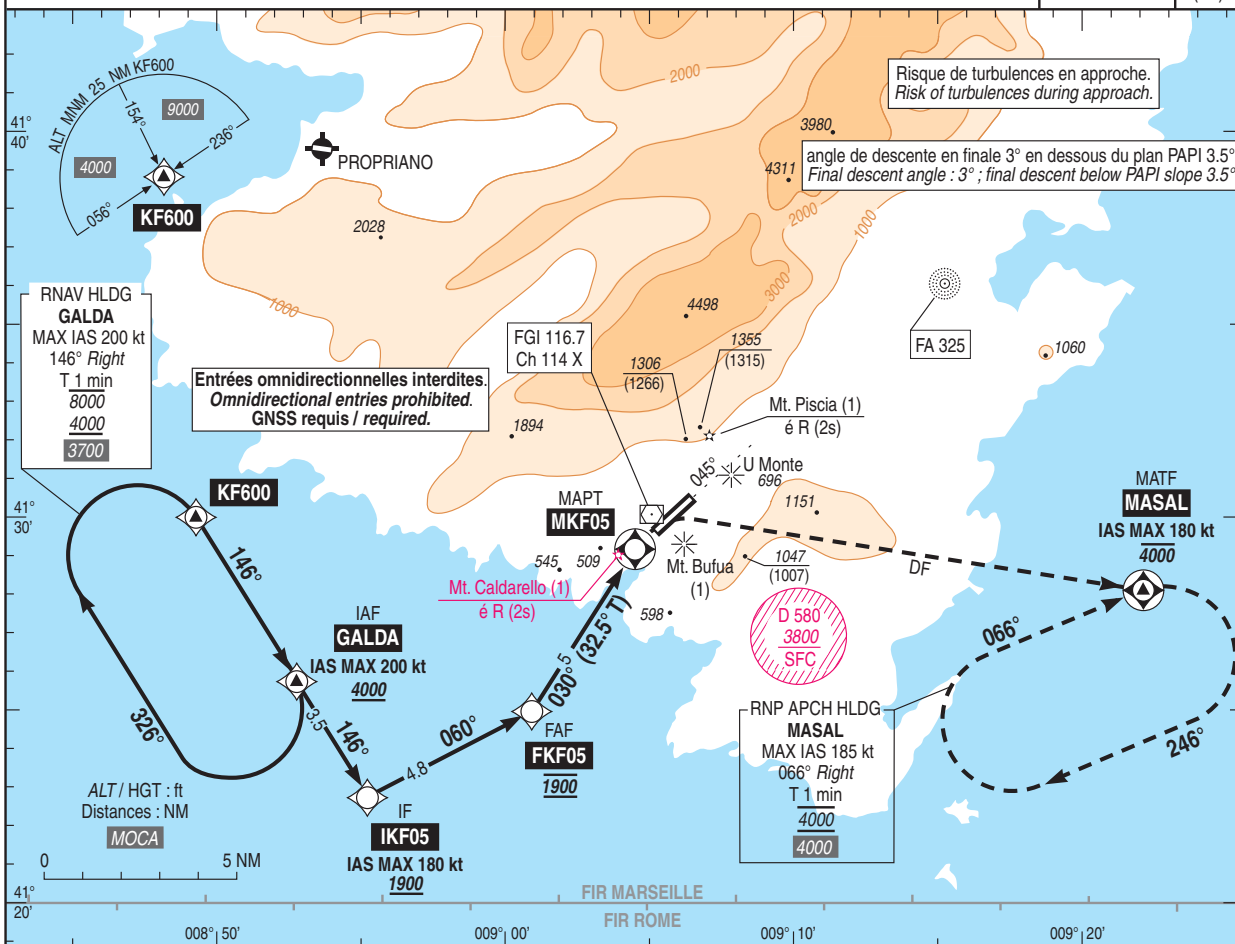
CAT A B C

RNAV (GNSS) RWY 05

ALT AD : 87, DTHR : 40 (2 hPa)

ATIS FIGARI : 118.730
APP : AJACCIO Approche / Approach : 121.050
TWR : FIGARI Tour / Tower : 120.300

RNP APCH	VAR 2°E (15)
----------	--------------------



→ MKF05 (NM)	9.8	5.0	0	0.7
→ DTHR 05 (NM)	10.5	5.7	0.7	0

MNM AD : distances verticales en pieds, RVR et VIS en mètres / vertical distances in ft, RVR and VIS in metres. REF HGT : ALT DTHR

CAT	LNAV (1)			MVL / Circling (2) HJ seulement Daytime only		DIST MKF05 (NM)	ALT (HGT)	5 1900 (1860)	4 1585 (1545)	3 MDA
	MDA (H)	RVR	OCH	MDA (H)	VIS					
A				1360 (1320)						
B	1270 (1230)	5000	1223	1470 (1430)	5000					
C				1770 (1730)						

Observations / Remarks : Panne de guidage GNSS durant l'approche / Loss of GNSS guidance during approach : voir / see AIP ENR 1.5.
(1) Procédure utilisable de nuit si indisponibilité des feux suivants : feux à éclats séquentiels, feux d'identification de piste 05 et Piscia, Bufua, Caldarello selon conditions / Procedure cannot be used at night if the following lights are not operating : flashing sequential lights, RWY 05 identification lights and Piscia, Bufua, Caldarello according to conditions : Voir/see AIP AD 2 LKFF.23.
(2) MVL interdite au Nord-Ouest de la piste / Circling prohibited North-West of runway.

FAF - MAPT	5.0 NM	70 kt 4 min 17	85 kt 3 min 32	100 kt 3 min 00	115 kt 2 min 37	130 kt 2 min 18	145 kt 2 min 04	160 kt 1 min 53
VSP (ft/min)		370	450	530	610	690	770	850



APPROCHE AUX INSTRUMENTS

FIGARI SUD CORSE

Instrument approach

CAT A B C

ALT AD : 87, DTHR : 40 (2 hPa)

VOR RWY 05

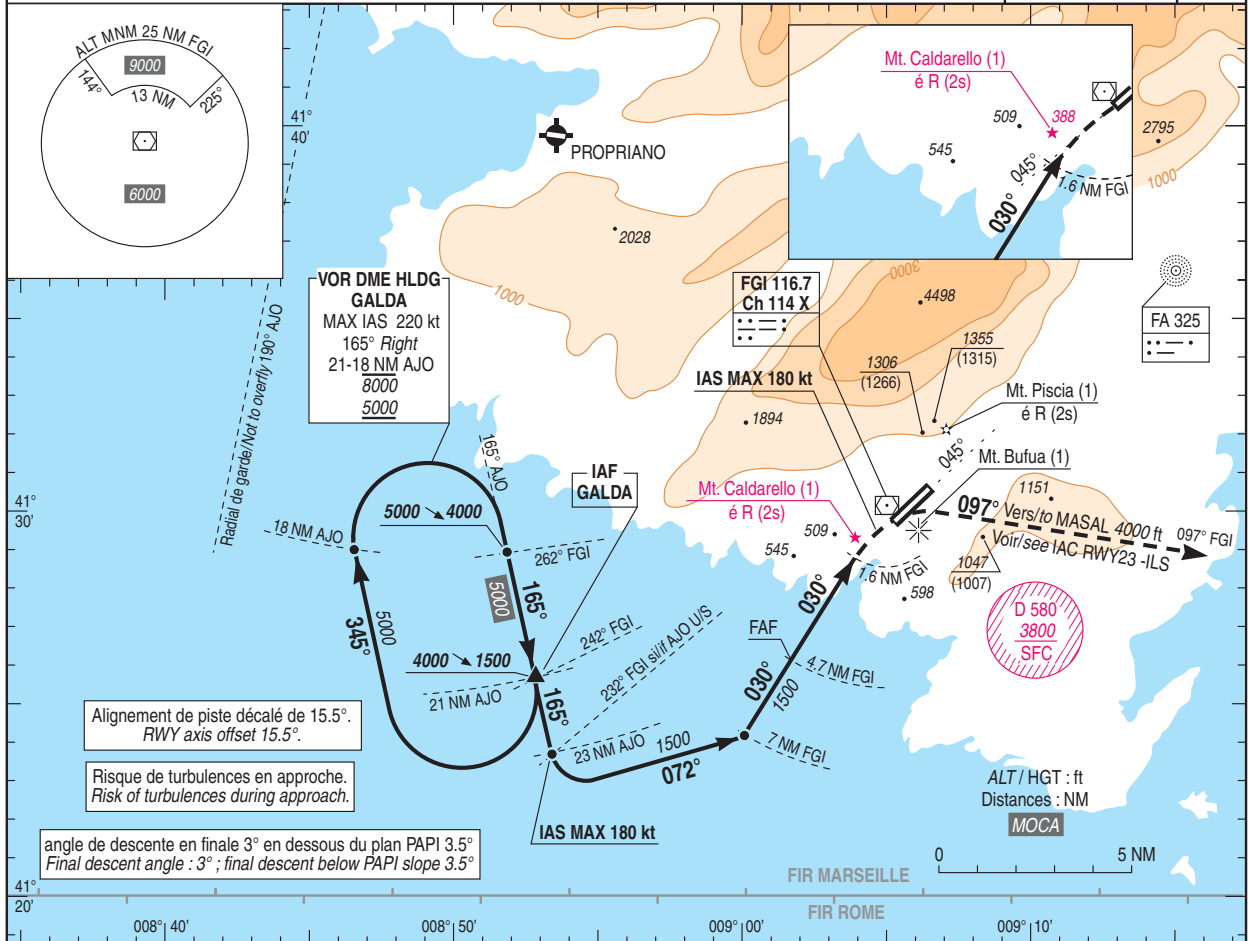
ATIS FIGARI : 118.730

APP : AJACCIO Approche / Approach 121.050

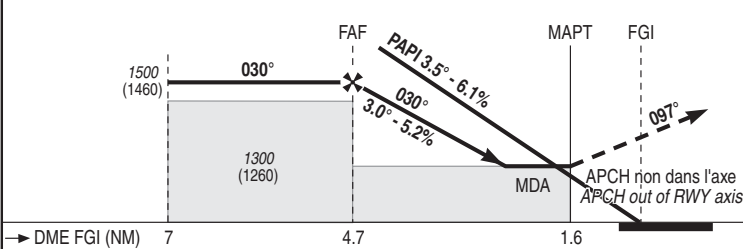
TWR : FIGARI Tour / Tower 120.300 (voir / see ADC 01)

DME requis/required

VAR
2°E
(15)



TA : 5000



API : Au **MAPT**, tourner à **droite** pour intercepter et suivre le **RDL 097° FGI** (RM 097°) en montée vers **4000** (3960). A **13 NM DME FGI**, intégrer l'attente **MASAL** à **4000** (3960). Monter à **2000** (1960) avant d'accélérer en palier.

Missed APCH : At **MAPT** turn **right** to intercept and follow **RDL 097° FGI** (MAG 097°) climbing up to **4000** (3960). At **13 NM DME FGI**, join holding pattern **MASAL** at **4000** (3960). Climb up to **2000** (1960) prior to level acceleration.

MNM AD : distances verticales en pieds, RVR et VIS en mètres / vertical distances in feet, RVR and VIS in metres. REF HGT : ALT DTHR

CAT	VOR (1)			MVL / Circling (2) HJ seulement/only		DME FGI NM ALT (HGT)
	MDA (H)	RVR	OCH	MDA (H)	VIS	
A	950 (910)		904	1430 (1390)		4 1280 (1240)
B	960 (920)	4100	912	1560 (1520)	4100	3 960 (920)
C	970 (930)		923	1800 (1760)		

Observations / Remarks : (1) Procédure inutilisable de nuit si indisponibilité des feux suivants : feux à éclats séquentiels, feux d'identification de piste 05 et Piscia, Bufua, Caldarello selon conditions / Procedure cannot be used at night if the following lights are not operating : flashing sequential lights, RWY 05 identification lights and Piscia, Bufua, Caldarello according to conditions : Voir / See AIP AD 2 LFKF:23.
(2) MVL interdite au Nord-Ouest de la piste / Circling prohibited NW of runway.

		70 kt	85 kt	100 kt	115 kt	130 kt	145 kt	160 kt
FAF - MAPT	3.1 NM	2 min 40	2 min 11	1 min 52	1 min 37	1 min 26	1 min 17	1 min 10
VSP (ft/min)		370	450	530	610	690	770	850