

APPROCHE AUX INSTRUMENTS

LA REUNION-ROLAND GARROS

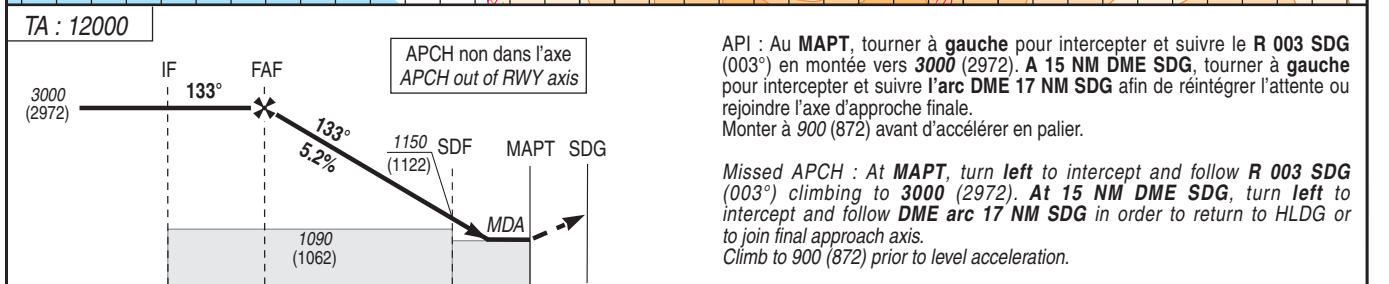
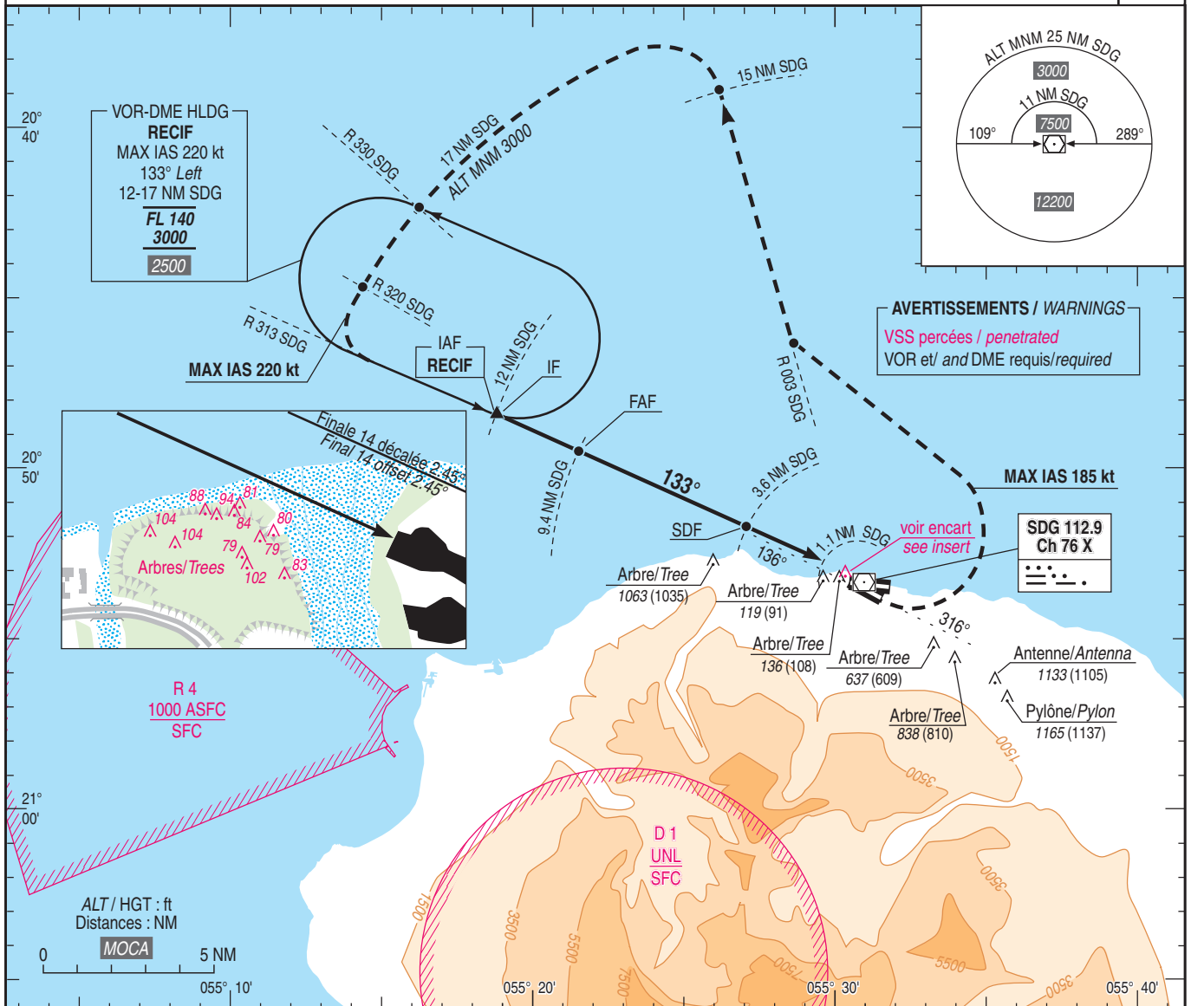
Instrument approach

CAT A B C D

ALT AD : 66, DTNR : 28 (1 hPa)

VOR RWY 14

ATIS : LA REUNION 126.800	VAR 19° W (2025)
APP : ROLAND GARROS Approche/Approach 127.200	
TWR : ROLAND GARROS Tour/Tower 118.400	



MNM AD : distances verticales en pieds, RVR et VIS en mètres. / Vertical distances in feet, RVR and VIS in metres. REF HGT : ALT DTNR

CAT	VOR			MVL / Circling (1)		DME SDG								
	MDA (H)	OCH	RVR	MDA (H)	VIS	NM	9	8	7	6	5	4	3	2
A	380 (350)	348	1500	940 (910)	1500	ALT	2870	2550	2240	1920	1600	1280	960	640
B	380 (350)	350	1500	1140 (1110)	1600	(HGT)	(2842)	(2522)	(2112)	(1892)	(1572)	(1252)	(932)	(612)
C	380 (350)	350	1600	1530 (1500)	2400									
D	390 (360)	358	1600	1560 (1540)	3600									

Observations/Remarks : (1) MVL interdites au Sud des pistes - PAPI RWY 32 : Pente 3.8° - 6.6% - MVL interdites en l'absence d'indication PAPI. (1) Circling prohibited S of RWY - PAPI RWY 32 : Slope 3.8° - 6.6% - Circling prohibited without PAPI.