

APPROCHE AUX INSTRUMENTS

LA REUNION-ROLAND GARROS

Instrument approach

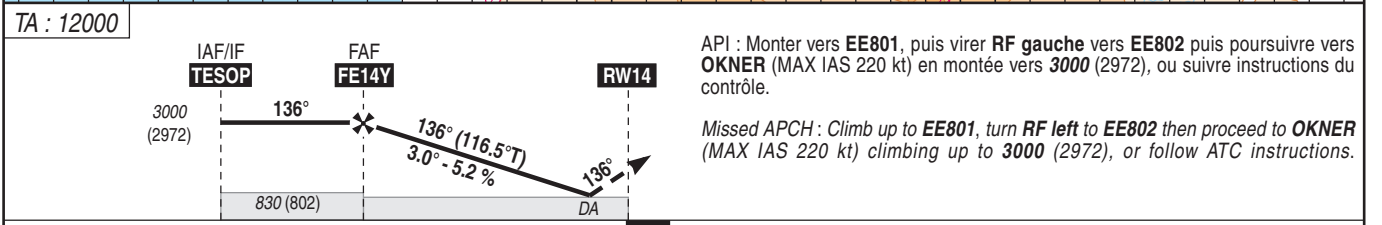
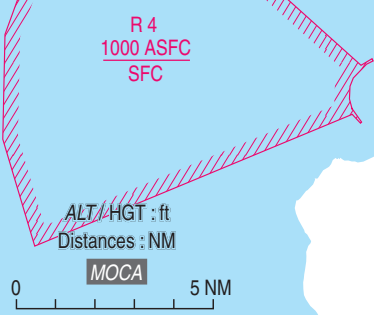
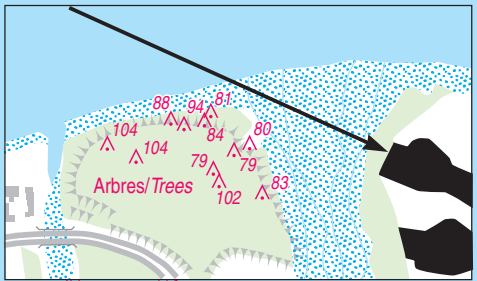
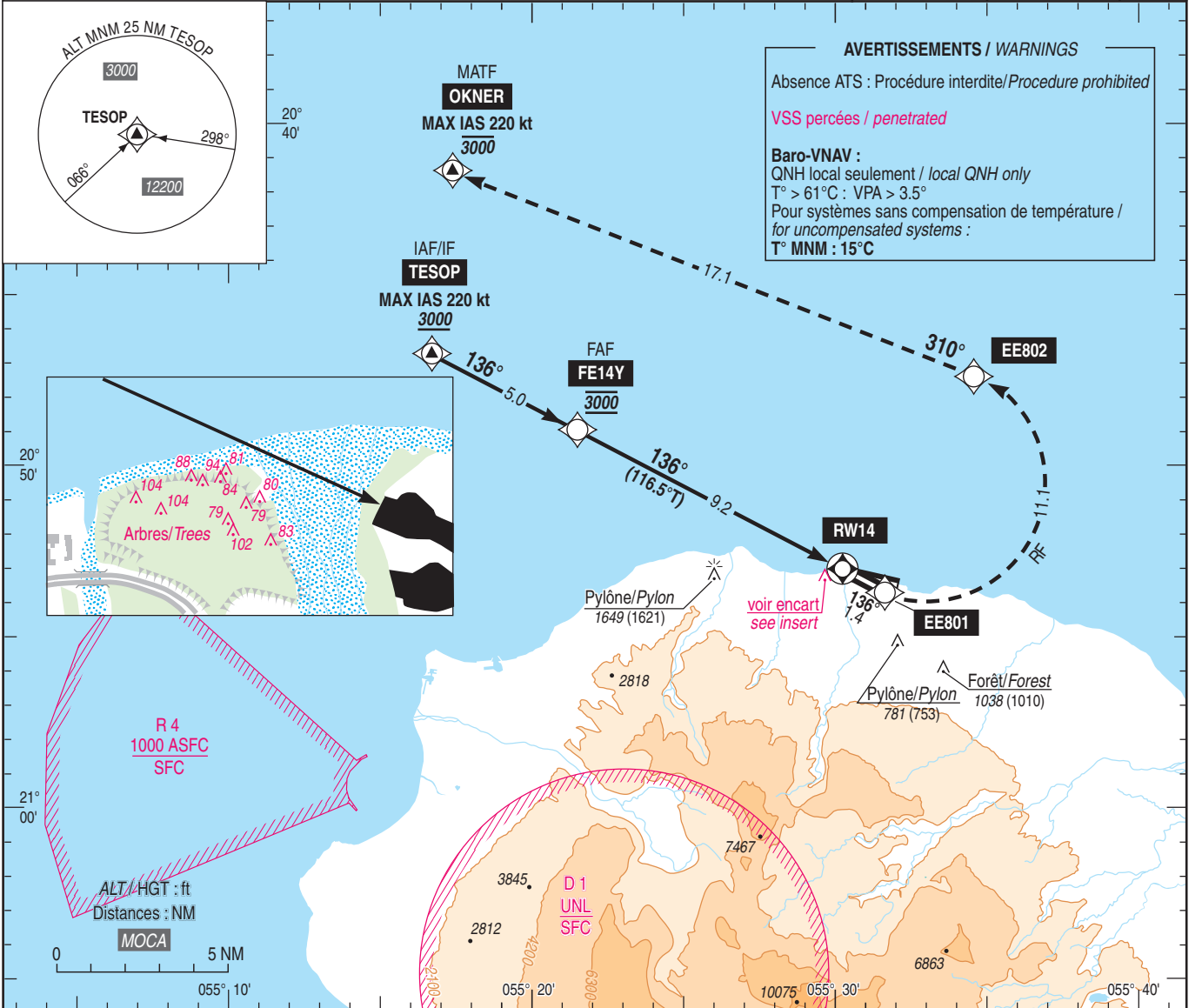
Réservée aux exploitants autorisés voir ENR 1.5 /
Reserved for authorized operators see ENR 1.5

CAT A B C D

ALT AD : 66, DTHR : 28 (1 hPa)

RNP Y RWY 14 (AR)

ATIS : LA REUNION 126.800	RNP AR APCH	TCH : 58	VAR 19° W (2025)
APP : ROLAND GARROS Approche/Approach 127.200			
TWR : ROLAND GARROS Tour/Tower 118.400			



DTHR → (NM) 14.2 9.2 0

MNM AD : distances verticales en pieds, RVR et VIS en mètres / vertical distances in feet, RVR and VIS in metres. REF HGT : ALT DTHR

CAT	RNP 0.3 (API 2.5%)			RNP 0.3 (API 3.0%)			RNP 0.3 (API 4.0%)			RNP 0.3 (API 5.0%)		
	DA (H)	RVR	OCH	DA (H)	RVR	OCH	DA (H)	RVR	OCH	DA (H)	RVR	OCH
A	650 (620)	1500	620	580 (550)	1500	547	460 (430)	1500	424	380 (350)	1500	345
B	670 (640)	1500	640	600 (570)	1500	568	480 (450)	1500	447	400 (380)	1500	371
C	690 (660)	2400	660	620 (590)	2400	590	500 (480)	2200	471	430 (400)	1800	396
D	710 (680)	2400	678	640 (610)	2400	608	520 (500)	2300	491	450 (420)	1900	418

Observations / Remarks : Panne de guidage GNSS lors de l'approche / Loss of GNSS guidance during approach : voir / see AIP ENR 1.5.