

APPROCHE AUX INSTRUMENTS

Instrument approach

CAT A B C D

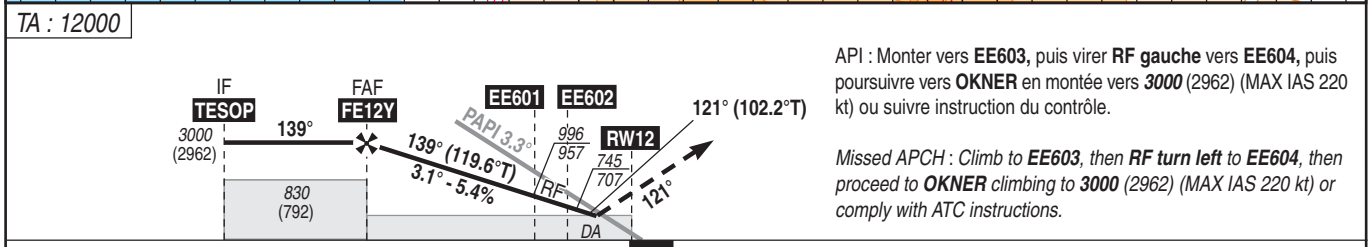
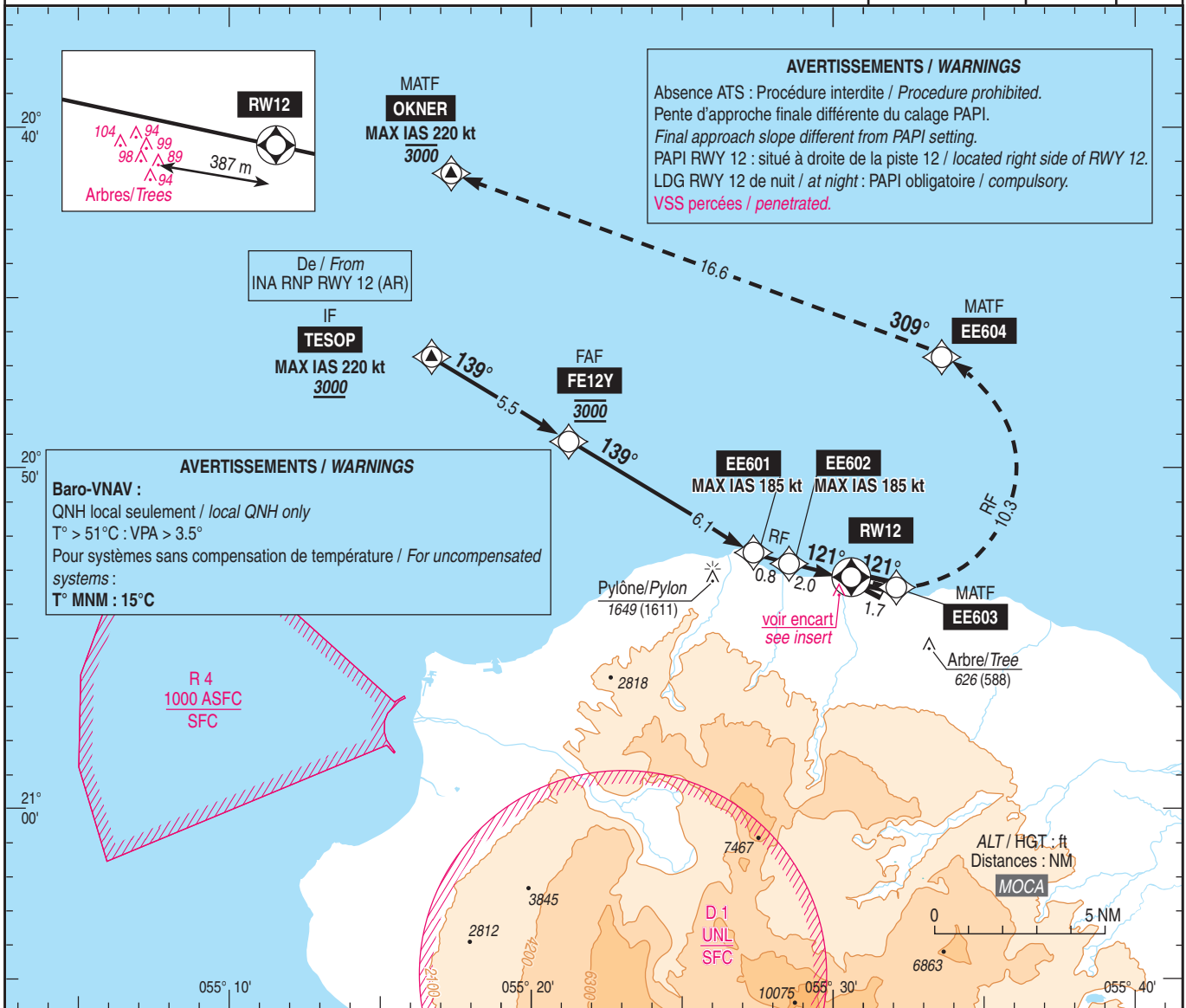
ALT AD : 66, DTHR : 38 (2 hPa)

LA REUNION-ROLAND GARROS

Réservée aux exploitants autorisés
Reserved for authorized operators
Voir / See AIP ENR 1.5

FNA RNP Y RWY 12 (AR)

| | | | |
|---|--------------------|-----------------|-------------------------------|
| ATIS LA REUNION 126.800 APP : ROLAND GARROS Approche/Approach 127.200 TWR : ROLAND GARROS Tour/Tower 118.400 | RNP AR APCH | TCH : 49 | VAR 19° W (2025) |
|---|--------------------|-----------------|-------------------------------|



MNM AD : distances verticales en pieds, RVR en mètres / vertical distances in feet, RVR in metres. REF HGT : ALT DTHR

| CAT | RNP 0.3 | | |
|-----|-----------|------|-----|
| | DA (H) | RVR | OCH |
| A | 450 (420) | 1500 | 412 |
| B | 540 (500) | 1600 | 432 |
| C | 640 (600) | 2400 | 452 |
| D | 740 (700) | 3600 | 470 |

Observations / Remarks : Panne de guidage GNSS lors de l'approche / Loss of GNSS guidance during approach : voir / see AIP ENR 1.5.