

APPROCHE AUX INSTRUMENTS

HUAHINE FARE

Instrument approach

CAT A B

RNP RWY 07

ALT AD : 14 (1 hPa), DTHR : 14

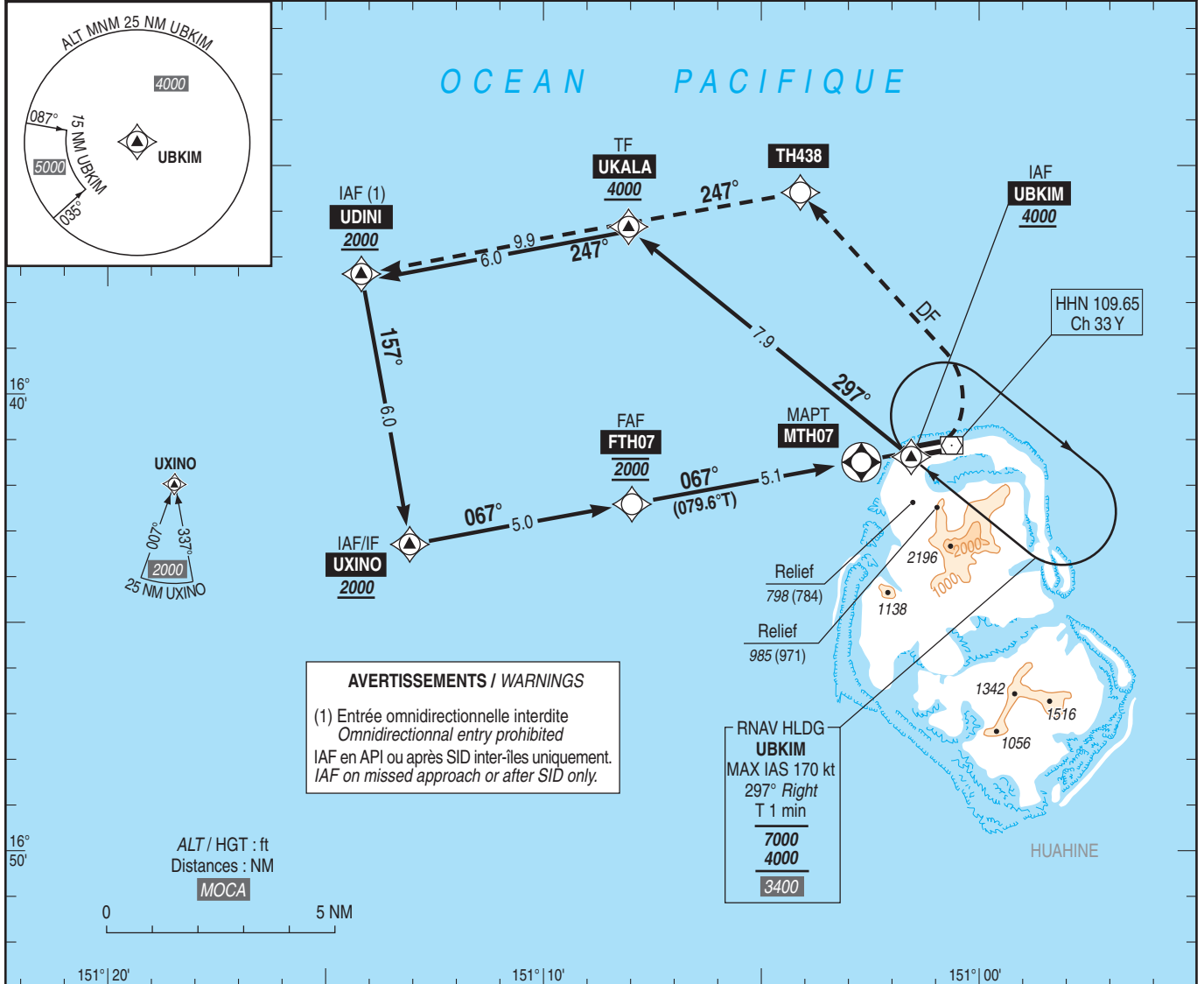
APP : assurée par / provided by TAHITI CTL 134.700

TWR : NIL

AFIS : HUAHINE Information 119.300 (FR seulement / only)

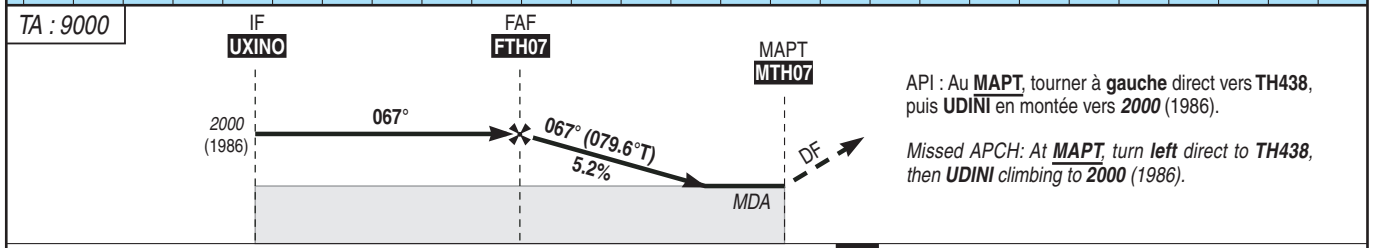
Absence ATS : **AJA** (119.300) FR seulement / only. Obtenir/Obtain QNH prévu / forecast auprès de/from TAHITI CTL ou sur / or on TEMSI.

| | |
|-----------------|------------|
| RNP APCH | VAR |
| | 13°E |
| | (2025) |



AVERTISSEMENTS / WARNINGS
(1) Entrée omnidirectionnelle interdite
Omnidirectional entry prohibited
IAF en API ou après SID inter-îles uniquement.
IAF on missed approach or after SID only.

RNAV HLDG
UBKIM
MAX IAS 170 kt
297° Right
T 1 min
7000
4000
3400



API : Au **MAPT**, tourner à gauche direct vers **TH438**, puis **UDINI** en montée vers **2000** (1986).
Missed APCH: At **MAPT**, turn left direct to **TH438**, then **UDINI** climbing to **2000** (1986).

→ DTHR (NM) 11.1 6.1 1.0 0 REF HGT : ALT AD

| CAT | LNAV | | | MVL / Circling (2) | | | MVL / Circling (2) Absence ATS HJ seulement/only Sans / without QNH local | | | DIST MTH07 | | | |
|-----|-------------|------|------|--------------------|------|------|--|------|------|------------|--------|--------|--------|
| | MDA (H) | RVR | OCH | MDA (H) | VIS | OCH | MDA (H) | VIS | OCH | NM | 5 | 4 | 3 |
| A | 1050 (1030) | 1500 | 1027 | 1200 (1180) | 1500 | 1177 | 1360 (1350) | 1500 | 1345 | ALT | 1970 | 1650 | 1335 |
| B | | | | | 1600 | | | 1600 | | (HGT) | (1956) | (1636) | (1321) |

Observations / Remarks : (2) MVL interdite au Sud de la piste / Circling prohibited South of RWY.
Panne de guidage GNSS lors de l'approche / Loss of GNSS guidance during approach : voir /see AIP ENR 1.5.

| | | 70 kt | 80 kt | 90 kt | 100 kt | 110 kt | 120 kt | 130 kt |
|--------------|--------|----------|----------|----------|----------|----------|----------|----------|
| FAF - MAPT | 5.1 NM | 4 min 22 | 3 min 50 | 3 min 24 | 3 min 04 | 2 min 47 | 2 min 33 | 2 min 21 |
| FAF - DTHR | 6.1 NM | 5 min 14 | 4 min 35 | 4 min 04 | 3 min 40 | 3 min 20 | 3 min 03 | 2 min 49 |
| VSP (ft/min) | | 370 | 425 | 475 | 530 | 580 | 635 | 690 |