

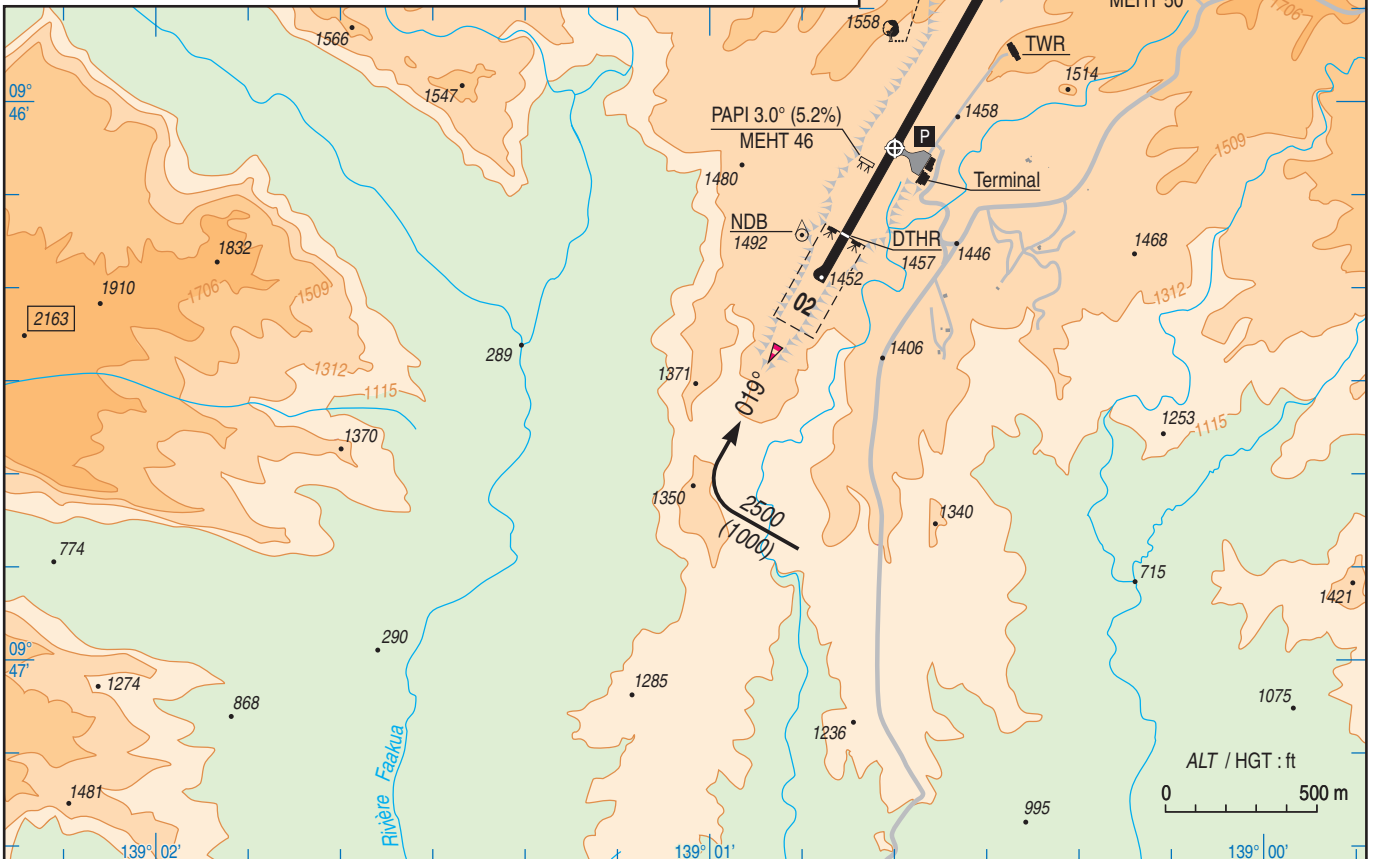
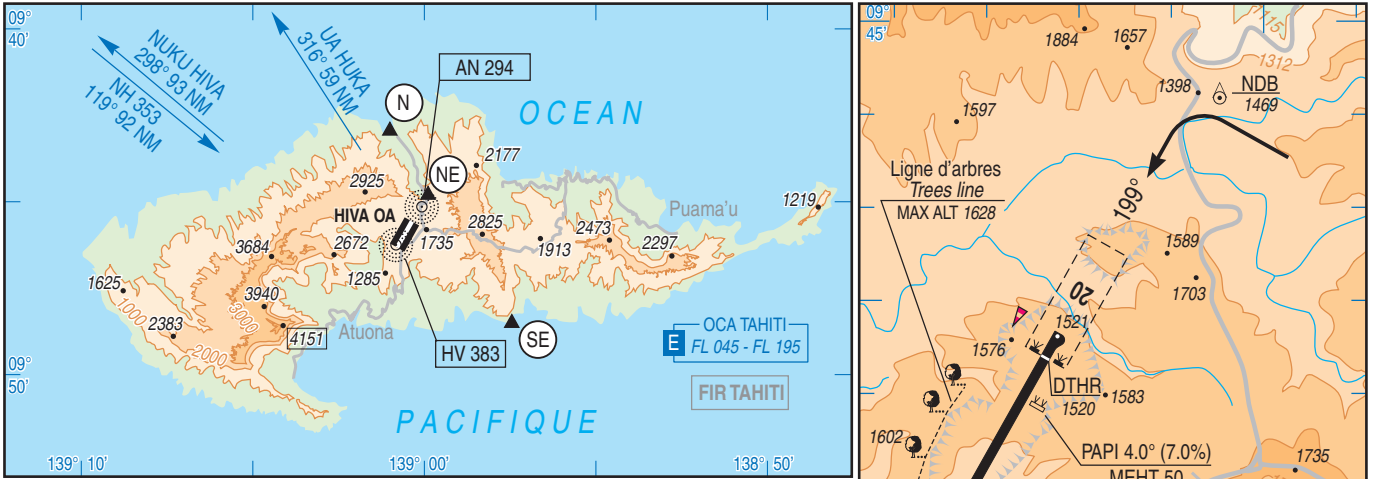
**APPROCHE - ATERRISSAGE A VUE**  
*Visual approach and landing*

Usage restraint  
*Restricted use*

**HIVA OA ATUONA**

	<b>ALT AD : 1521 ft (55 hPa)</b>	<b>NTMN</b>	
	LAT : 09 46 05 S	VAR 11°E (2025)	
	LONG : 139 00 40 W		

APP : NIL  
TWR : NIL  
AFIS : 119.700 (FR). Absence ATS : **A/A** (119.700) FR seulement / only.



RWY	QFU	Dimensions Dimensions	Nature Surface	Résistance Strength	TORA (1)	TODA	ASDA (1)	LDA (1)
02	019	1600 x 30	Revêtue Paved	17 F/C/Y/T	1515	2000	1515	1355
20	199				1440	1840	1440	1355

**Observations / Remarks :**  
(1) Voir / See AD 2 NTMN.13  
Marker 75 MHz implanté à proximité de la radiobalise HV.  
75 MHz marker located close to HV beacon.  
**Aides lumineuses / Lighting aids : NIL.**

