

APPROCHE AUX INSTRUMENTS

OUEVA OULOUP

Instrument approach

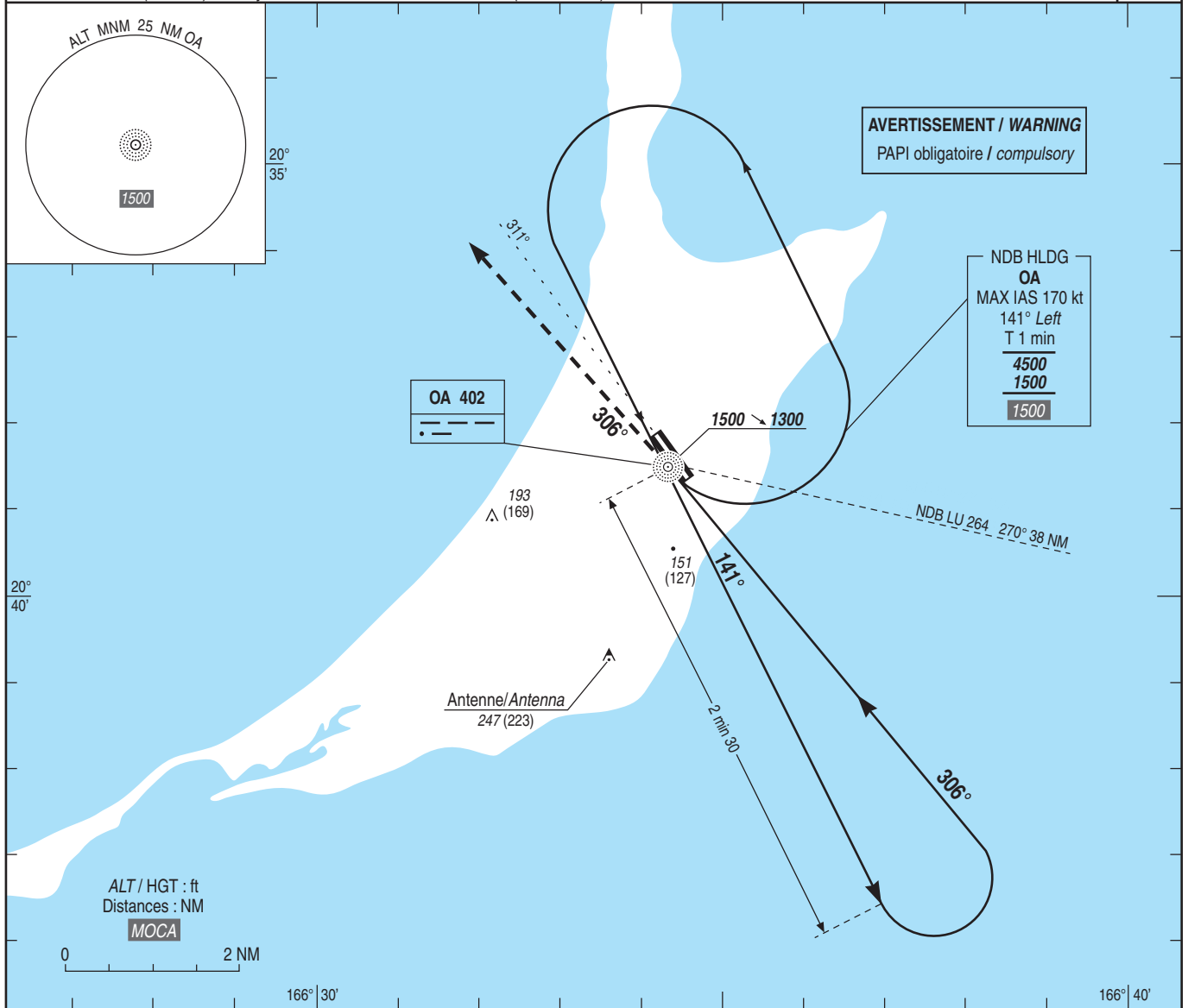
CAT A B

NDB RWY 31

ALT AD : 24 (1 hPa), THR : 24

APP : TONTOUTA Approche/Approach 125.100 - 128.300 (s)
TWR : NIL
AFIS : OUEVA Information 118.700 (L) (FR)
Absence ATS : A/A (118.700) FR seulement. Obtenir le QNH local sur STAP 118.700 (☎ 45 79 13) ou auprès de TONTOUTA Information 125.100.
A/A (118.700) FR only. Obtain local QNH on STAP 118.700 (☎ 45 79 13) or from TONTOUTA Information 125.100.

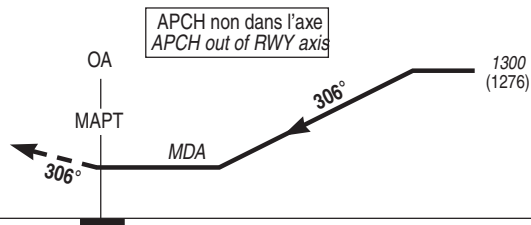
VAR
12°E
(2015)



TA : 11000

API : Monter RM 306° vers 1500 (1476) puis retour verticale OA.

Missed APCH : climb MAG 306° up to 1500 (1476) then return overhead OA.



MNM AD : distances verticales en pieds, RVR et VIS en mètres / vertical distances in feet, RVR and VIS in metres.

REF HGT : ALT AD

CAT	NDB			MVL/Circling	
	MDA (H)	RVR	OCH	MDA (H)	VIS
A	510 (480)	1500	478	570 (540)	1500
B	530 (500)	1600			1600