

APPROCHE AUX INSTRUMENTS

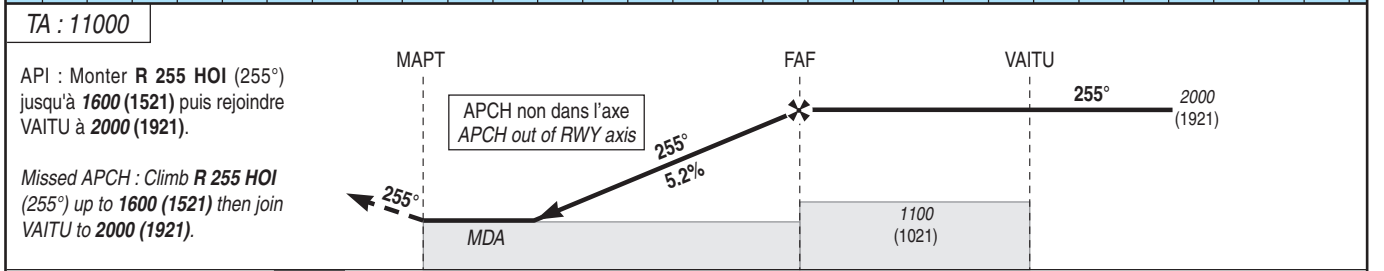
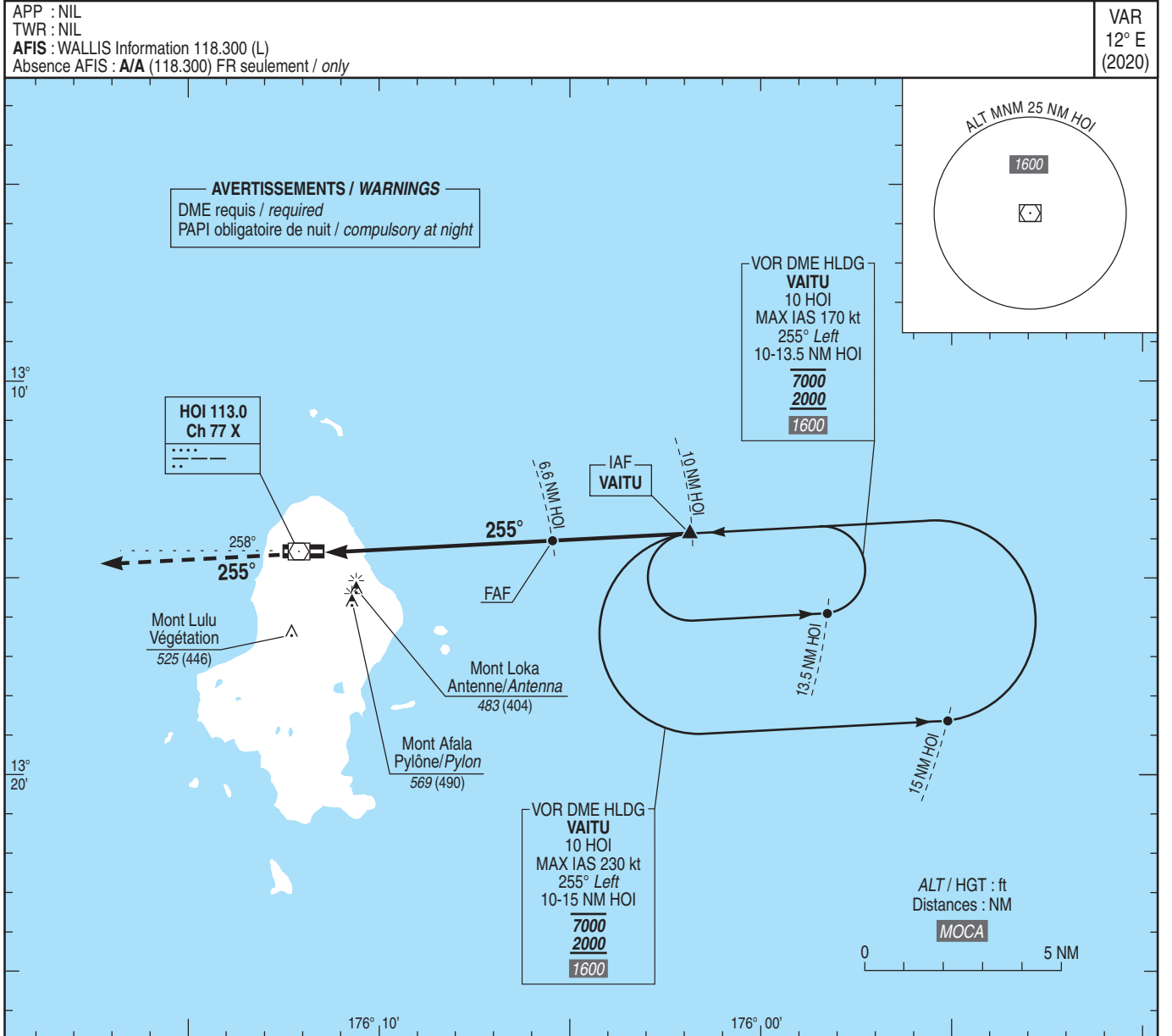
WALLIS HIHIFO

Instrument approach

CAT A B C D

ALT AD : 79 (3 hPa), DTHR : 75

VOR Z RWY 26



DTHR ← (NM)	1.2	5.9	9.3
DME ← (NM)	1.9	6.6	10

MNM AD : distances verticales en pieds, RVR et VIS en mètres / Vertical distances in feet, RVR and VIS in meters. REF HGT : ALT AD

CAT	VOR Z			MVL/Circling ⁽¹⁾		DME HOI				
	MDA (H)	RVR	OCH	MDA (H)	VIS	NM	6	5	4	3
A	530 (450)	1500	446	870 (790)	1500	ALT	1820	1500	1180	860
B	580 (500)	1600		(HGT)	(1741)	(1421)	(1101)	(781)		
C	680 (600)	2400		970 (890)	2400					
D	780 (700)	3600		970 (890)	3600					

Observations / Remarks : (1) Absence ATS : HJ seulement / daytime only.

IAF - FAF	3.4 NM	70 kt	85 kt	100 kt	115 kt	130 kt	145 kt	160 kt	185 kt
FAF - MAPT	4.7 NM	2 min 55	2 min 24	2 min 02	1 min 46	1 min 34	1 min 24	1 min 17	1 min 06
VSP (ft/min)		4 min 02	3 min 19	2 min 49	2 min 27	2 min 10	1 min 57	1 min 46	1 min 31
		370	450	530	610	690	770	850	980