

**APPROCHE AUX INSTRUMENTS**

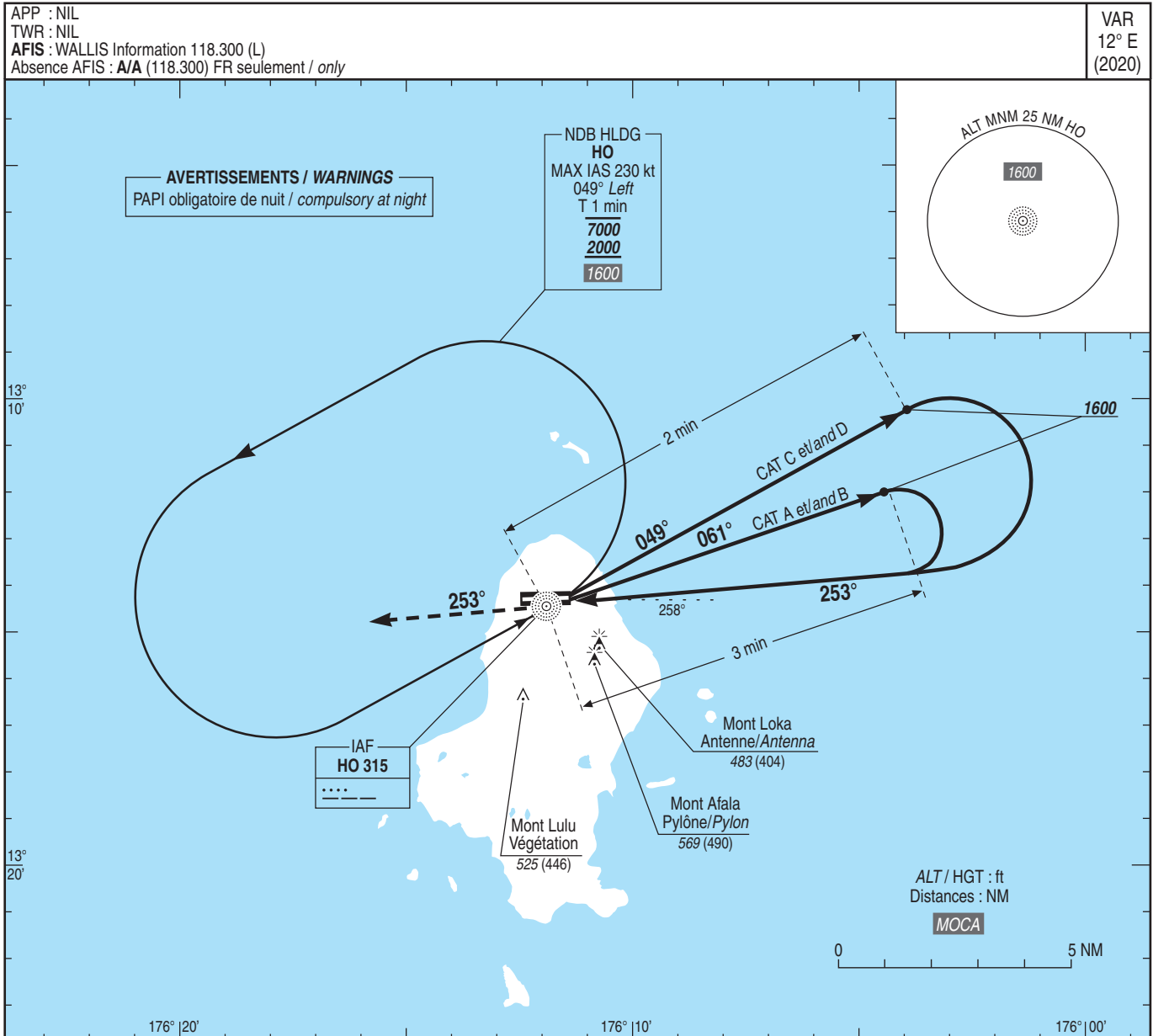
**WALLIS HIHIFO**

Instrument approach

CAT A B C D

ALT AD : 79 (3 hPa), DTHR : 75

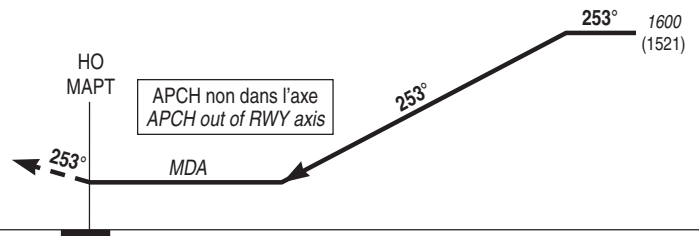
NDB RWY 26



TA : 11000

API : Monter **R 253 HO** (253°) vers **1600 (1521)** puis rejoindre HO à **2000 (1921)**.

Missed APCH : Climb **R 253 HO** (253°) up to **1600 (1521)** then join HO to **2000 (1921)**.



MNM AD : distances verticales en pieds, RVR et VIS en mètres / Vertical distances in feet, RVR and VIS in meters.

REF HGT : ALT AD

CAT	NDB			MVL/Circling <sup>(1)</sup>	
	MDA (H)	RVR	OCH	MDA (H)	VIS
A		1500		<b>870</b> (790)	1500
B		1600		<b>870</b> (790)	1600
C	<b>870</b> (790)	2400	785	<b>970</b> (890)	2400
D		3600		<b>970</b> (890)	3600

Observations / Remarks : (1) Absence ATS : HJ seulement / daytime only.